

NM2-2RG

2" M2 Round Can-less LED Recessed Gimbal

Source: 6W or 8W LED

400lm or 600lm

Type

Project

Catalog No.

Notes

PRODUCT DESCRIPTION

M2 downlight series features quality and convenience with easy installation for insulated or non-insulated applications. Luminaires can be configured into square trim with an accessory and produces over 600 lumens.

FEATURES

- 15° Adjustable
- No housing required - IC Airtight rated
- Easy installation for remodel or new construction applications
- Square trim available for an alternative appearance
- Quick disconnect allows for extended lengths
- 400lm or 600lm LED packages
- 2700K, 3000K or 4000K @ 90+ CRI
- Triac or ELV dimming
- 5-year limited warranty
- cETLus Listed for Wet Locations

SPECIFICATION

Construction: Die-cast aluminum trims with a powder-coated finish. Gimbal trim is adjustable up to 15°. Optional field changeable square trim is available.

Air Flow Restriction: Luminaire has factory installed gasket to restrict airflow from room into ceiling plenum to <2CFM (cubic feet per minute) in accordance with ASTM 283 airtight requirements.

Clearance: IC rated luminaires are rated for direct contact with insulation (not spray foam insulation), no minimum clearance is required.

Junction Box: Prewired junction box includes quick connect to LED fixtures for ease of installation. Junction box includes two 1/2" trade size knockouts and snap on cover with 7" quick connect wire. Luminaire includes 5" quick connect wire.

Maximum length between luminaire and driver is 40'. For longer remote driver remote run length, consult factory.

Mounting: No housing is required, two tensions steel spring clips secure luminaire to ceiling. Accommodates ceiling thickness up to 3/4". New construction frame-in kits are available, see accessories.

ELECTRICAL	40	60
Input Voltage	120V	
Input Power	6W	8W
Color Temperature	2700K or 3000K	2700K, 3000K, 4000K
Color Rendering Index	90+ CRI	
Dimming	Triac / ELV	
Operating Temp.	0°C to 40°C	
Beam Spread	40° Flood	
Lifetime	60,000 hours @ L70	

OPTIONAL TRIM ACCESSORIES

NM2-2SGT: Square Trim for NM2-2RG, Black or White

OPTIONAL MOUNTING ACCESSORIES

NM2-MLS1: One Head Multiple Lighting System Plate

NM2-MLS2: Two Head Multiple Lighting System Plate

NF-R246: Universal New Construction Frame-In

NFC-R275: New Construction Frame-In with Collar

NM2-EW-4: 4' Quick Connect Linkable Extension Cable

NM2-EW-10: 10' Quick Connect Linkable Extension Cable

NEPK-23LEDUNV: 23W Emergency with Remote Test Switch

NEPKA-20/23LEDRTS: Ribbon Test Switch for NEPK-23LEDUNV

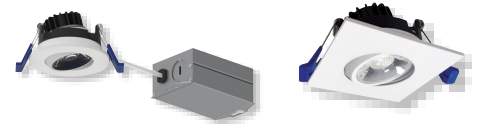
Emergency: Luminaire is compatible with NEPK-23LEDUNV (ordered separately). Remote mounted battery operates luminaire for 90 minute emergency operation with a fully charged battery. Emergency includes remote test switch, ribbon test switch accessory (NEPKA-20/23LEDRTS) ordered separately.

LABELS AND LISTINGS

- cETLus Listed for Wet Locations
- [5-Year Limited Warranty](#)
- FCC compliant
- Certified to the high efficacy requirements of California Title 24 JA8-2025

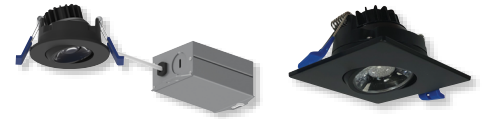


PRODUCT IMAGES AND DIMENSIONS



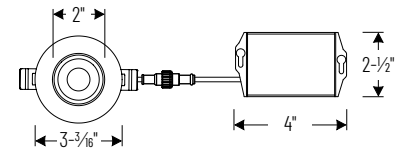
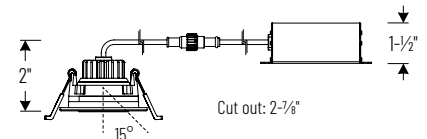
NM2-2RGMPW
White Finish

NM2-2RGMPW + NM2-2SGTMPW
with Square Trim Accessory



NM2-2R6BB
Black Finish

NM2-2R6BB + NM2-2SGTBB
with Square Trim Accessory



NM2-2SGT
Square Trim

2" M2 Round Can-less LED Recessed Gimbal

Lumens / Wattage	Color Temperature	Finish
NM2-2RG40 = 400lm / 6W	27 = 2700K	BB = Black
NM2-2RG60 = 600lm / 8W	30 = 3000K	MPW = White
NM2-2RG60 = 600lm / 8W	40 = 4000K	MPW = White

Square Trim Accessory

Description
NM2-2SGTB = Square Trim for NM2-2RG, Black Finish
NM2-2SGTMPW = Square Trim for NM2-2RG, White Finish

Optional Accessories

Accessory Type	Finish
NM2-MLS1 = One Head MLS Plate	BB = Black
NM2-MLS2 = Two Head MLS Plate	MPW = White
NM2-MLS3 = Three Head MLS Plate	
NF-R246 = Universal New Construction Frame-In	
NFC-R275 = New Construction Frame-In with Collar	
NM2-EW-4 = 4' Quick Connect Extension Cable	
NM2-EW-10 = 10' Quick Connect Extension Cable	
NEPK-23LEDUNV = 23W Emergency LED Driver w/ Remote Test Switch	
NEPKA-20/23LEDRTS = Ribbon Test Switch for NEPK-23LEDUNV	

Example: **NM2-2RG6030MPW** = 2" M2 Round Can-less LED Recessed Gimbal, 600lm / 8W, 3000K, White Finish

NM2-2RG

2" M2 Round Can-less LED Recessed Gimbal Accessories

Type

Project

Catalog No.

Notes

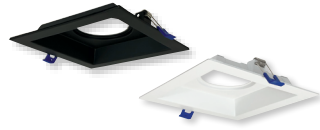


Square Trim for NM2-2RG

NM2-2SGTB
NM2-2SGTMPW

Black Finish
White Finish

Converts the round trim included with NM2-2RG gimbal into a square trim



One Head Multiple Lighting System Plate

NM2-MLS1B 1 Head / Black Finish
NM2-MLS1MPW 1 Head / White Finish

Converts one round LED luminaire into multiple lighting system without a large housing.



Two Head Multiple Lighting System Plate

NM2-MLS2B 2 Head / Black Finish
NM2-MLS2MPW 2 Head / White Finish

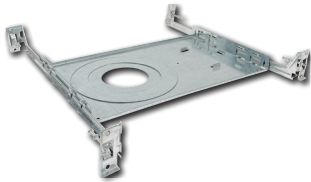
Converts two round LED luminaires into multiple lighting system without a large housing.



Three Head Multiple Lighting System Plate

NM2-MLS3B 3 Head / Black Finish
NM2-MLS3MPW 3 Head / White Finish

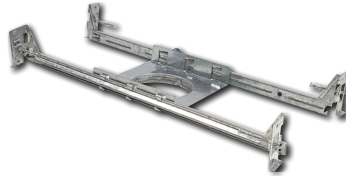
Converts three round LED luminaires into multiple lighting system without a large housing.



Universal New Construction Frame-In

NF-R246

Universal new construction frame-in can be used to assist installing can-less recessed downlighting.



New Construction Frame-In with Collar

NFC-R275

New construction frame-in can be used to assist installing can-less recessed downlighting.

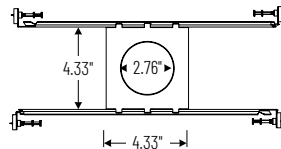
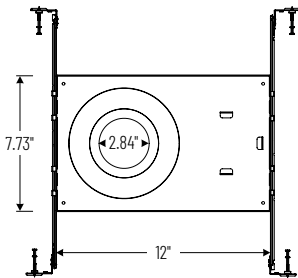


Quick Connect Extension Linkable Cables

NM2-EW-4
NM2-EW-10

4' Cable
10' Cable

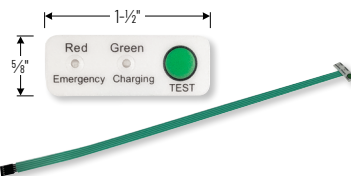
Use to extend the length between luminaire and driver enclosure. Can be connected together to create custom lengths. Maximum length between luminaire and driver is 40'. For longer remote driver remote run length, consult factory.



23W Emergency LED Driver with Remote Test Switch

NEPK-23LEDUNV

120-277V Emergency battery operates luminaire for 90 minute emergency operation with a fully charged battery. Requires 24 hours to charge the battery.



Ribbon Test Switch for NEPK-23LEDUNV

NEPKA-20/23LEDRTS

Ribbon test switch replaces remote test switch included with emergency driver. Double sided tape is pre-installed.

PHOTOMETRICS

2" M2 Round Can-less LED Recessed Gimbal

Type

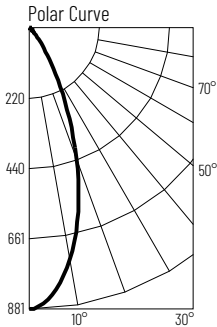
Project

Catalog No.

Notes

Test Information

Test Number: NTR11356
Part Number: NM2-2RG4027MPW
Beam Spread: 40° Flood
Lumens: 486lm
Wattage: 6.3W
Efficacy: 77lpw
CCT / CRI: 2700K / 90 CRI
Spacing Criteria (0°-180°): 0.66
Spacing Criteria (90°-270°): 0.64



Illuminance at a Distance

Distance from Luminaire	FC at Nadir	Beam Diameter
2'	217fc	1'-6"
4'	54.2fc	3'
6'	24.1fc	4'-5"
8'	13.6fc	5'-11"
10'	8.7fc	7'-5"

Zonal Lumen Summary

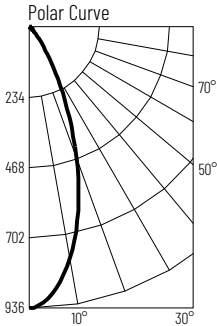
Zone	Lumens	% Luminaire
0-30	373	76.7
0-40	439	90.2
0-60	471	96.9
0-90	484	99.5
90-180	2	0.5
0-180	486	100

Candela Table

Vertical Angles	Candela
0	867
5	827
15	598
25	302
35	109
45	28

Test Information

Test Number: NTR11365
Part Number: NM2-2RG4030MPW
Beam Spread: 40° Flood
Lumens: 514lm
Wattage: 6.3W
Efficacy: 82lpw
CCT / CRI: 3000K / 90 CRI
Spacing Criteria (0°-180°): 0.66
Spacing Criteria (90°-270°): 0.66



Illuminance at a Distance

Distance from Luminaire	FC at Nadir	Beam Diameter
2'	233fc	1'-6"
4'	58.3fc	2'-11"
6'	25.9fc	4'-5"
8'	14.6fc	5'-11"
10'	9.3fc	7'-5"

Zonal Lumen Summary

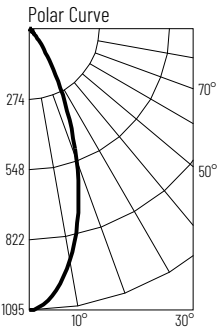
Zone	Lumens	% Luminaire
0-30	400	77.9
0-40	467	90.8
0-60	499	97
0-90	512	99.5
90-180	2	0.5
0-180	514	100

Candela Table

Vertical Angles	Candela
0	932
5	891
15	637
25	315
35	106
45	25

Test Information

Test Number: NTR11354
Part Number: NM2-2RG6027MPW
Beam Spread: 40° Flood
Lumens: 598lm
Wattage: 7.7W
Efficacy: 77lpw
CCT / CRI: 2700K / 90 CRI
Spacing Criteria (0°-180°): 0.66
Spacing Criteria (90°-270°): 0.66



Illuminance at a Distance

Distance from Luminaire	FC at Nadir	Beam Diameter
2'	274fc	1'-5"
4'	68.5fc	2'-11"
6'	30.4fc	4'-4"
8'	17.1fc	5'-10"
10'	11fc	7'-2"

Zonal Lumen Summary

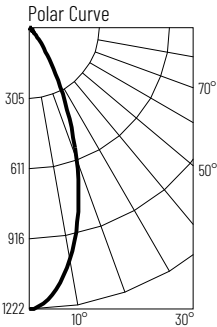
Zone	Lumens	% Luminaire
0-30	465	77.8
0-40	541	90.5
0-60	580	97
0-90	595	99.5
90-180	3	0.5
0-180	598	100

Candela Table

Vertical Angles	Candela
0	1095
5	1046
15	745
25	360
35	117
45	31

Test Information

Test Number: NTR11355
Part Number: NM2-2RG6030MPW
Beam Spread: 40° Flood
Lumens: 658lm
Wattage: 7.9W
Efficacy: 83lpw
CCT / CRI: 3000K / 90 CRI
Spacing Criteria (0°-180°): 0.64
Spacing Criteria (90°-270°): 0.64



Illuminance at a Distance

Distance from Luminaire	FC at Nadir	Beam Diameter
2'	305fc	1'-5"
4'	76.4fc	2'-11"
6'	33.9fc	4'-4"
8'	19.1fc	5'-10"
10'	12.2fc	7'-2"

Zonal Lumen Summary

Zone	Lumens	% Luminaire
0-30	514	78
0-40	596	90.5
0-60	639	97.1
0-90	655	99.5
90-180	3	0.5
0-180	658	100

Candela Table

Vertical Angles	Candela
0	1222
5	1665
15	828
25	393
35	127
45	35