

NM2-2RDC

2" M2 Round LED Recessed Downlight

Source: 6W, 8W or 10W LED
400lm, 600lm or 850lm

PRODUCT DESCRIPTION

M2 downlight series features quality and convenience with easy installation for insulated or non-insulated applications. Luminaires can be configured into multiple options with trim accessories and produces over 850 lumens.

FEATURES

- No housing required - IC Air-Tight rated
- Easy installation for remodel or new construction applications
- Variety of trim accessories to configure desired appearance
- Quick disconnect allows for extended lengths
- 400lm, 600lm or 850lm LED packages
- 2700K or 3000K @ 90+ CRI
- Triac or ELV dimming
- 5-year limited warranty
- ENERGY STAR certified
- cETLus Listed for Damp Locations

SPECIFICATION

Construction: Die-cast aluminum trims available in matte black or matte powder white finish. Open downlight includes a reflector with the same finish as trim; optional field changeable accessories are available; square trim, pinhole trim, wall wash trim, reflector inserts or baffle inserts.

Air Flow Restriction: Luminaire has factory installed gasket to restrict airflow from room into ceiling plenum to <2CFM (cubic feet per minute) in accordance with ASTM-283 Air-Tight requirements.

Clearance: IC rated luminaires are rated for direct contact with insulation (not spray foam insulation), no minimum clearance is required.

Junction Box: Prewired junction box includes quick connect to LED fixtures for ease of installation. Junction box includes two (400lm/600lm) or four (850lm) 1/2" trade size knockouts and snap on cover with 7" quick connect wire. Luminaire includes 5" (400lm/600lm) or 4" (850lm) quick connect wire.

Mounting: No housing is required, two tensions steel spring clips secure luminaire to ceiling. Accommodates ceiling thickness up to 3/4". New construction frame-in kit is available, see accessories.

ELECTRICAL

Input Voltage: 120V
Lumens / Wattage:
40 = 400lm / 6W; **60** = 600lm / 8W; **85** = 850lm / 10W
Color Temperature: 2700K or 3000K
CRI: 90+CRI
Beam Spread: 36° Flood
Operating Temp.:
40 & 60 = 0°C to 40°C ambient temperature
85 = 0°C to 25°C ambient temperature
Lifetime: 60,000 hours @ L70
Dimming: Dimmable down to 10% with Triac or ELV
[Click Here](#) or check complete dimmer list at www.NoraLighting.com in the "Compatibility" page under "Resources" tab

Trims: M2 series is available in three lumen outputs with LED driver. Round trims can be converted to baffles, pinholes or wall wash in the field with optional trims and inserts.

OPTIONAL TRIM ACCESSORIES

NM2-2REFL: Reflector Insert for NM2-2RDC, Black or Haze
NM2-2BAF: Baffle Insert for NM2-2RDC, Black or White
NM2-2RPH: Round Pinhole Trim for NM2-2RDC, Black or White
NM2-2RW: Round Wall Wash Trim for NM2-2RDC, Black or White
NM2-2SDT: Square Trim for NM2-2RDC, Black or White

OPTIONAL MOUNTING ACCESSORIES

NM2-MLSI: One Head Multiple Lighting System Plate
NM2-MLS2: Two Head Multiple Lighting System Plate
NM2-MLS3: Three Head Multiple Lighting System Plate
NM2-2R-F: New Construction Frame-In Plate
NM2-EW-4: 4' Quick Connect Linkable Extension Cable
NM2-EW-10: 10' Quick Connect Linkable Extension Cable

LABELS AND LISTINGS

- cETLus Listed for Damp Locations
- ENERGY STAR certified
- [5-Year Limited Warranty](#)
- FCC compliant
- Certified to the high efficacy requirements of California Title 24 JA8-2019



Type

Project

Catalog No.

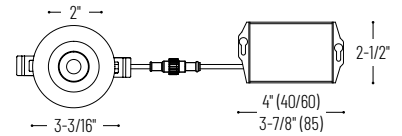
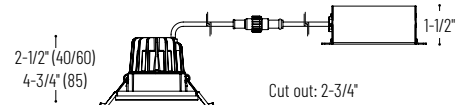
Notes

PRODUCT IMAGES AND DIMENSIONS



NM2-2RDCXXXBB
400lm or 600lm
Matte Black

NM2-2RDC85XXMPW
850lm
Matte Powder White



NM2-2REFL
Reflector Insert



NM2-2BAF
Baffle Insert



NM2-2RPH
Round Pinhole Trim



NM2-2RW
Round Wall Wash Trim



NM2-2SDT
Square Trim

2" M2 Round LED Recessed Downlight

Trim Type	Lumens / Wattage	Color Temperature / CRI	Finish
NM2-2RDC = 2" Round Downlight	40 = 400lm / 6W	27 = 2700K / 90 CRI	BB = Matte Black
	60 = 600lm / 8W	30 = 3000K / 90 CRI	MPW = Matte Powder White
	85 = 850lm / 10W		

M2 Trim Accessories

Accessory Type	Finish
NM2-2REFL = Reflector for NM2-2RDC	B = Matte Black HZ = Haze
NM2-2BAF = Baffle for NM2-2RDC	B = Matte Black
NM2-2RPH = Round Pinhole Trim for NM2-2RDC	MPW = Matte Powder White
NM2-2RW = Round Wall Wash Trim for NM2-2RDC	
NM2-2SDT = Square Trim for NM2-2RDC	

Optional Mounting Accessories

Accessory Type	Finish
NM2-MLSI = One Head MLS Plate	BB = Matte Black
NM2-MLS2 = Two Head MLS Plate	MPW = Matte Powder White
NM2-MLS3 = Three Head MLS Plate	
NM2-2R-F = New Construction Frame-In Plate	
NM2-EW-4 = 4' Quick Connect Extension Cable	
NM2-EW-10 = 10' Quick Connect Extension Cable	

Example: **NM2-2RDC6030MPW** = 2" M2 Round LED Recessed Downlight, 600lm / 8W, 3000K / 90 CRI, Matte Powder White

NM2-2RDC

2" M2 Round LED Recessed Downlight Accessories

Type
Project
Catalog No.
Notes



Reflector/Baffle Insert for NM2-2RDC

- NM2-2REFLB** Matte Black Reflector
 - NM2-2REFLHZ** Haze Reflector
 - NM2-2BAFB** Matte Black Baffle
 - NM2-2BAFMPW** Matte Powder White Baffle
- Replaces the reflector included with NM2-2RDC downlight



Square Trim for NM2-2RDC

- NM2-2SDTB** Matte Black
 - NM2-2SDTMPW** Matte Powder White
- Converts the round trim included with NM2-2RDC downlight into a square trim



Round Pinhole Trim for NM2-2RDC

- NM2-2RPHB** Matte Black
 - NM2-2RPHMPW** Matte Powder White
- Converts the round trim included with NM2-2RDC downlight into a round pinhole



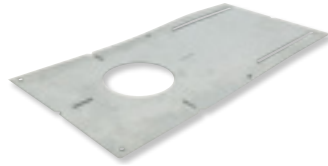
Round Wall Wash Trim for NM2-2RDC

- NM2-2RWB** Matte Black
 - NM2-2RWMPW** Matte Powder White
- Converts the round trim included with NM2-2RDC downlight into a round wall wash



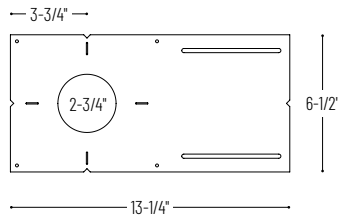
Multiple Lighting System Plates

- NM2-MLS1B** 1 Head / Matte Black
 - NM2-MLS1MPW** 1 Head / Matte Powder White
 - NM2-MLS2B** 2 Head / Matte Black
 - NM2-MLS2MPW** 2 Head / Matte Powder White
 - NM2-MLS3B** 3 Head / Matte Black
 - NM2-MLS3MPW** 3 Head / Matte Powder White
- Converts multiple round LED luminaires into multiple lighting system without a large housing.



New Construction Frame-In Plate

- NM2-2R-F**
- For new construction pre-wiring and easier layout planning.



Quick Connect Extension Linkable Cables

- NM2-EW-4** 4' Cable
 - NM2-EW-10** 10' Cable
- Use to extend the length between luminaire and driver enclosure. Can be connected together to create custom lengths. Maximum length between luminaire and driver is 40'.

Luminaire Examples



PHOTOMETRICS

2" M2 Round LED Recessed Downlight

Type

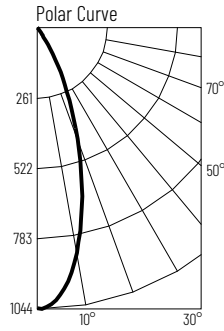
Project

Catalog No.

Notes

Test Information

Test Number: NTR11363
 Part Number: NM2-2RDC4027MPW
 Beam Spread: 36° Flood
 Lumens: 445lm
 Wattage: 6.2W
 Efficacy: 72lpw
 CCT / CRI: 2700K / 90 CRI
 Spacing Criteria (0°-180): 0.6
 Spacing Criteria (90°-270): 0.6



Illuminance at a Distance

Distance from Luminaire	FC at Nadir	Beam Diameter
2'	261fc	1'-4"
4'	65.3fc	2'-7"
6'	29fc	3'-11"
8'	16.3fc	5'-2"
10'	10.4fc	6'-6"

Zonal Lumen Summary

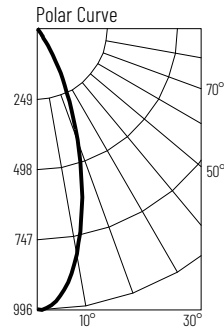
Zone	Lumens	% Luminaire
0-30	387	86.8
0-40	418	93.7
0-60	436	97.9
0-90	443	99.6
90-180	2	0.4
0-180	445	100

Candela Table

Vertical Angles	Candela
0	1044
5	993
15	645
25	264
35	42
45	14

Test Information

Test Number: NTR11350
 Part Number: NM2-2RDC4030MPW
 Beam Spread: 37° Flood
 Lumens: 464lm
 Wattage: 6.23W
 Efficacy: 75lpw
 CCT / CRI: 3000K / 90 CRI
 Spacing Criteria (0°-180): 0.62
 Spacing Criteria (90°-270): 0.62



Illuminance at a Distance

Distance from Luminaire	FC at Nadir	Beam Diameter
2'	248fc	1'-4"
4'	61.9fc	2'-8"
6'	27.5fc	4'
8'	15.5fc	5'-5"
10'	9.9fc	6'-8"

Zonal Lumen Summary

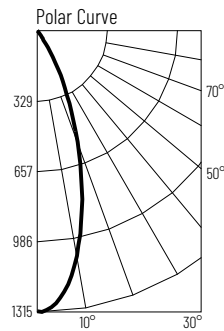
Zone	Lumens	% Luminaire
0-30	393	84.7
0-40	434	93.5
0-60	455	98
0-90	464	99.9
90-180	1	0.1
0-180	464	100

Candela Table

Vertical Angles	Candela
0	990
5	950
15	639
25	272
35	51
45	15

Test Information

Test Number: NTR11351
 Part Number: NM2-2RDC6027MPW
 Beam Spread: 37° Flood
 Lumens: 594lm
 Wattage: 7.8W
 Efficacy: 76lpw
 CCT / CRI: 2700K / 90 CRI
 Spacing Criteria (0°-180): 0.62
 Spacing Criteria (90°-270): 0.6



Illuminance at a Distance

Distance from Luminaire	FC at Nadir	Beam Diameter
2'	327fc	1'-4"
4'	81.9fc	2'-8"
6'	36.4fc	4'
8'	20.5fc	5'-5"
10'	13.1fc	6'-8"

Zonal Lumen Summary

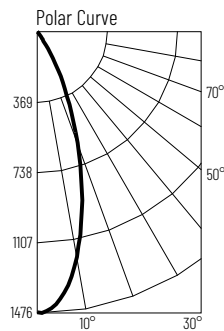
Zone	Lumens	% Luminaire
0-30	505	85
0-40	557	93.7
0-60	582	97.9
0-90	593	99.8
90-180	1	0.2
0-180	594	100

Candela Table

Vertical Angles	Candela
0	1310
5	1251
15	847
25	359
35	85
45	19

Test Information

Test Number: NTR11351
 Part Number: NM2-2RDC6030MPW
 Beam Spread: 36° Flood
 Lumens: 641lm
 Wattage: 8.1W
 Efficacy: 79lpw
 CCT / CRI: 3000K / 90 CRI
 Spacing Criteria (0°-180): 0.6
 Spacing Criteria (90°-270): 0.6



Illuminance at a Distance

Distance from Luminaire	FC at Nadir	Beam Diameter
2'	368fc	1'-4"
4'	92.1fc	2'-7"
6'	40.9fc	3'-11"
8'	23fc	5'-2"
10'	14.7fc	6'-6"

Zonal Lumen Summary

Zone	Lumens	% Luminaire
0-30	547	85.4
0-40	597	93.2
0-60	626	97.8
0-90	639	99.8
90-180	1	0.2
0-180	641	100

Candela Table

Vertical Angles	Candela
0	1473
5	1403
15	909
25	372
35	67
45	21

PHOTOMETRICS

2" M2 Round LED Recessed Downlight

Type _____

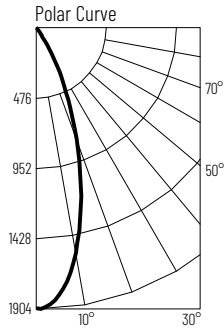
Project _____

Catalog No. _____

Notes _____

Test Information

Test Number: NTR1431
 Part Number: NM2-2RDC8530MPW
 Beam Spread: 38° Flood
 Lumens: 882lm
 Wattage: 10.18W
 Efficacy: 87lpw
 CCT / CRI: 3000K / 90 CRI
 Spacing Criteria (0°-180): 0.62
 Spacing Criteria (90°-270): 0.62



Illuminance at a Distance

Distance from Luminaire	FC at Nadir	Beam Diameter
2'	476fc	1'-5"
4'	119fc	2'-8"
6'	52.9fc	4'-1"
8'	29.7fc	5'-6"
10'	19fc	6'-11"

Zonal Lumen Summary

Zone	Lumens	% Luminaire
0-30	757	85.9
0-40	824	93.4
0-60	864	98
0-90	880	99.8
90-180	2	0.2
0-180	882	100

Candela Table

Vertical Angles	Candela
0	1904
5	1824
15	1246
25	540
35	88
45	27