

Installation Instructions

NOXTW-4

Onyx Tunable White Retrofit Reflectors

READ PRIOR TO ATTEMPTING INSTALLATION
ALWAYS TURN OFF MAIN POWER BEFORE INSTALLATION
INSTALLATION SHOULD BE CARRIED OUT BY YOUR LOCAL ELECTRICIAN

⚠ WARNING - Risk of fire or electric shock. LED Retrofit Kit installation requires knowledge of luminaire electrical systems. If not qualified, do not attempt installation. Contact a qualified electrician.

⚠ AVERTISSEMENT - Risque d'incendie ou d'électrocution. Ne modifiez pas, ne déplacez pas et n'ôtez pas le câblage, les porte-lampe, le bloc d'alimentation ou tout autre composant électrique.

⚠ WARNING - Risk of fire or electric shock. Install this kit only in luminaires that have the construction features and dimensions shown in the photographs and/or drawings and where the input rating of the retrofit kit does not exceed the input rating of the luminaire.

⚠ AVERTISSEMENT - Risque d'incendie ou d'électrocution. Installez ce kit uniquement dans les luminaires dont les caractéristiques de construction et les dimensions sont indiquées sur les photographies et / ou les dessins, et où le calibre d'entrée du kit de modification ne dépasse pas le calibre d'entrée du luminaire.

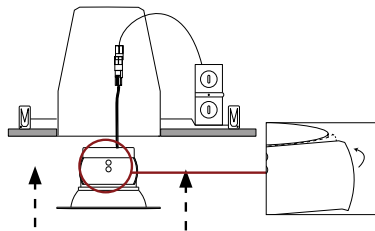
⚠ WARNING - To prevent wiring damage or abrasion, do not expose wiring to edges of sheet metal or other sharp objects.

⚠ AVERTISSEMENT - Afin d'éviter tout endommagement ou abrasion du câblage, ne mettez pas en contact le câblage avec les arêtes de la tôle ou d'autres objets tranchants.

THIS RETROFIT KIT IS ACCEPTED AS A COMPONENT OF A LUMINAIRE WHERE THE SUITABILITY OF THE COMBINATION SHALL BE DETERMINED BY AUTHORITIES HAVING JURISDICTION. PRODUCT MUST BE INSTALLED BY A QUALIFIED ELECTRICIAN IN ACCORDANCE WITH THE APPLICABLE AND APPROPRIATE ELECTRICAL CODES, THE INSTALLATION GUIDE DOES NOT SUPERSEDE LOCAL OR NATIONAL REGULATIONS FOR ELECTRICAL INSTALLATIONS. MIN. 90C SUPPLY WIRING

FOR LED DEDICATED HOUSINGS:

1. Connect orange female connector to male connector.
⚠ IMPORTANT: Connector is not intended to support weight of the fixture. Please support fixture at all times.
 When using Nora housings, attaching ground wire not required.
2. Squeeze friction blades on reflector and carefully push fixture into the housing.



FOR RETROFIT HOUSINGS:

1. Place provided LED Lamp Replacement Marking Sticker inside the housing where visible to installer.
2. If necessary, remove medium-base mounting bracket only to provide room for fixture to be installed fully and properly into the housing. (Figure 1)
3. Attach Medium-base socket adapter (included) to housing and reflector. (Figure 2)
⚠ IMPORTANT: Do not make or alter any open holes in an enclosure of wiring or electrical components during kit installation.

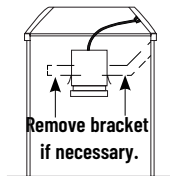


Figure 1

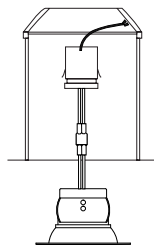


Figure 2

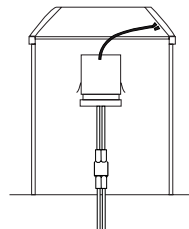
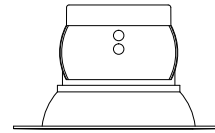


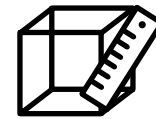
Figure 2



PACKAGING CONTENTS



- a. Medium-base socket adapter
 b. LED Lamp Replacement Marking Sticker

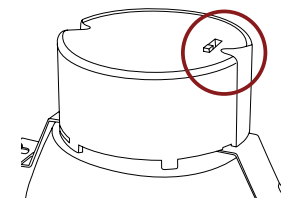


MINIMUM HOUSING DIMENSIONS

Min. Diameter	Min. Height	Max. number of 12AWG through branch wiring
102mm (4")	139mm (5.5")	8
102mm (4") tapered to 85mm (3.3") at top	88mm (3.5")	8

CCT TUNABLE:

CCT selection can be achieved by changing the 5-position dip switch located on top of the driver.



TO ADD INSERT (NOT INCLUDED):

Push the insert accessory into the lens until it snaps-in. Onyx TW has a snap-fit mechanism that allows for changeable finishes.

NOTE: Not recommended to remove insert accessory after installation. Lens may detach from the trim in the event of removing the insert. Firmly hold the lens down while removing insert. If detaches, push the lens back until a click.

