

# NHIC-27LMRAT

6" Shallow IC Air-Tight LED Dedicated New Construction Housing  
(Compatible with Cobalt / Onyx / PRISM)

Type	
Project	
Catalog No.	
Notes	

## PRODUCT DESCRIPTION

Dedicated new construction housing for use in insulated ceilings can be in direct contact with insulation. Air-tight construction provides energy savings by reducing the flow of air through the ceiling. The housing is dedicated and labeled for use with LED retrofit luminaires.

## FEATURES

- Shallow IC rated housing for direct contact with insulation
- IC Air-Tight energy saving by reducing the flow of air through the ceiling
- Rated for direct contact with insulation
- cULus listed for damp location and through branch circuit wiring

## CONSTRUCTION

**Housing:** 0.040 aluminum housing with riveted cap adjusts from 1/2" to 1" depth.

**Bar Hangers:** Two 13-3/4" to 24-1/2" adjustable bar hangers with captive nails are included on frame. Hanger bars have T-Bar slot and alignment feet. Bar hangers are parallel to junction box, but can be repositioned 90° perpendicular to junction box if desired. "L" Shaped bar hanger foot to align to bottom of construction joist. A T-Bar notch allows easy installation in a suspended ceiling.

**Junction Box:** Prewired 25 cubic inch 0.064" thick galvanized steel, with seven 1/2" trade size knockouts, four Romex® pryouts, and snap on covers. All leads are #18AWG wire, the ground wire is connected to the bottom, and quick connectors are supplied on all leads. Through branch circuit wiring, (4-in, 4-out).

## ELECTRICAL

**Input Voltage:** 120/277V

**Socket:** Quick connect for LED reflectors

**Operating Temp.:** 122°F (50°C) max. ambient temperature

**Dimming:** Specified by reflector

## STEP DOWN TRANSFORMER (CONVERTS 277V INPUT TO 120V)

Optional 50W step down transformer installed (NHIC-27LMRAT/277)

## COMPATIBILITY

NLCBC-6 / NLCBC2-6 - Cobalt Series

NOX-56 / NOXAC-56 / NOXTW-56 - 5" / 6" Onyx Series

NOX-636 - 6" Onyx Series

NLPR-56 - PRISM Series

## EMERGENCY (NEPK-07LEDUNV)

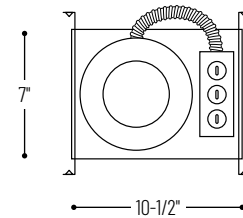
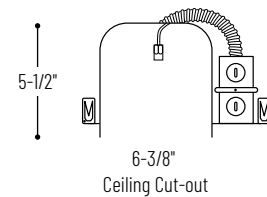
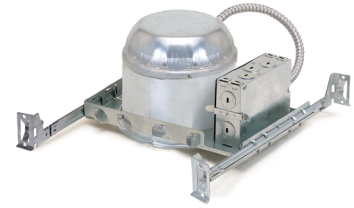
Remote 90-minute battery back-up and remote test switch can be specified and installed separately.

## LABELS AND LISTINGS

- cULus Listed for Damp Location (wet location when used with compatible reflectors)
- Meets or exceeds ASTM-283 Air-Tight requirements
- Certified to the high efficacy requirements of California Title 24 JA8-2019
- RoHS compliant



## PRODUCT IMAGES & DIMENSIONS



## 6" Shallow IC Air-Tight LED Dedicated New Construction Housing

Housing Type

**NHIC-27LMRAT** = 6" Shallow IC Air-Tight Dedicated New Construction Housing, 120/277V input (120V Triac/ELV dimming)

**NHIC-27LMRAT/277** = 6" Shallow IC Air-Tight Dedicated New Construction Housing, 277V input with 50W Step Down Transformer

**NHIC-27LMRAT/4W** = 6" Shallow IC Air-Tight Dedicated New Construction Housing, 120/277V input (120V Triac/ELV/0-10V & 277V 0-10V dimming, Cobalt only - LE4 required)

**NHIC-27LMRAT/PEM** = 6" Shallow IC Air-Tight Dedicated New Construction Housing with Pre-Wiring for Emergency, 120/277V input (Cobalt only - EM required)

**NHIC-27LMRAT/6WPPEM** = 6" Shallow IC Air-Tight Dedicated New Construction Housing with Pre-Wiring for Emergency, 120/277V input (120V Triac/ELV/0-10V & 277V 0-10V dimming, Cobalt only - LE4EM required)

Example: **NHIC-27LMRAT** = 6" Shallow IC Air-Tight LED Dedicated New Construction Housing, 120/277V input