

NFBIC-4LMRAT
4" Recessed LED IC / Non-IC Housing 2 Hour Fire & Sound Dampening Rated Source: 4" - 650 Lumen

PRODUCT DESCRIPTION

Specification grade fire-rated new construction housing. The double wall fixture incorporates a non-combustible fiber insulation to prevent passage of flames, toxic gases, ignitable gasses into ceiling plenums. The cULus listed housing is rated for a minimum of 2 hours protection. The noncombustible fiber fill also acts as sound deadening material eliminating the transfer of sound between floors. Suitable for commercial, multi-family and residential applications.

FEATURES

- Rated for direct contact with insulation
- cULus classified 2 Hour Fire Rating
- cULus Wet Listed (Only with designated trims)
- cULus listed for damp location and through branch circuit wiring
- Quick connect provided
- 24-1/2" Bar hangers with captive nails and alignment foot
- Accommodates 1-3/4" maximum ceiling thickness

CONSTRUCTION
Plaster Frame

High quality 0.03" steel die cut one piece frame.

Housing

Die formed 20 gauge galvanized steel construction. Housing interior is comprised of a flexible non-combustible insulation.

Air Flow Restriction

Housing has factory installed gaskets to restrict airflow from room into ceiling plenum to <2CFM (cubic feet per minute) in accordance with ASTM-283 Air-Tight requirements.

Sound Deadening

STC tested by a certified acoustical testing lab. STC (Sound Transfer Class) was only change by 1 point when NFBIC housing was installed. Test reports on file.

Socket Connector

Quick connect provided for electrical connection to LED compatible trim.

Bar Hangers

Two 13-3/4" to 24-1/2" adjustable bar hangers with captive nails are included on frame. Bar hangers are parallel to junction box, but can be repositioned 90° perpendicular to junction box if desired. "L" Shaped bar hanger foot to align to bottom of construction joist. A T-Bar notch allow for easy installation in a suspended ceiling.

Junction Box

Prewired 0.03" thick galvanized steel, with seven 1/2" knockouts, four Romex® pryouts, and snap on covers. All leads are #18AWG wire, the ground wire is connected to the bottom, and quick connectors are supplied on all leads. Through branch circuit wiring, (4-in, 4-out).

Quick Connect Feature

Housing contains three UL approved quick connections that allow insertion of 1/4" stripped solid or tinned standard conductors to be inserted into the connector. Connectors are pre-attached to fixture power, common, and ground circuits.

Thermal Protector

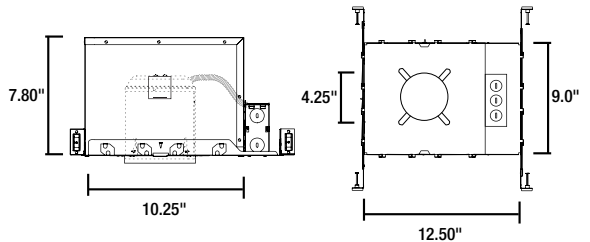
Standard UL thermal protector rated for 90°C is affixed to inner top surface of housing.

Installation

Number of luminaries not to exceed the ratio, one per 25sq ft of the total ceiling area, with minimum separation of 3ft between luminaires.

Labels and Listings

UL Classified. Two Hour Fire Rating
 cULus Listed for Damp Location w/ Feed Through
 cULus Wet Listed (Only with designated trims)
 Meets or exceeds ASTM-283 Air-Tight Requirements
 ANSI/UL 263
 ANSI/UL 1598
 STC tested for sound transfer.


DIMENSIONS
NFBIC-4LMRAT

LED Options

Item No.	Description
Cobalt Series	
NLCBC-453	4" Cobalt Series, Squared Round
NLCBC-455	4" Cobalt Series, Squared Pinhole
NLCBC-456	4" Cobalt Series, Squared Regress
NLCBC-451D	4" Cobalt Series, Deep Reflector
NLCBC-452D	4" Cobalt Series, Deep Baffle
Onyx Series	
NOX-431	4" Onyx Series, Reflector
NOX-432	4" Onyx Series, Baffle
Iolite Series	
NIR-4RG	4" Iolite Retrofit Series, Round, Surface Regress
NIR-4RC	4" Iolite Retrofit Series, Round, Cone Regress
NIR-4SG	4" Iolite Retrofit Series, Square, Surface Regress
NIR-4SC	4" Iolite Retrofit Series, Square, Cone Regress

4" LED Firebox

NFBIC-4LMRAT: 4" Recessed LED IC/Non-IC Housing