

NLIC-301AT

TRUE 3" IC Air-Tight Low Voltage New Construction Housing

Source: 50W MR16 max.

Type

Project

Catalog No.

Notes

PRODUCT DESCRIPTION

3" Low Voltage housings are a true three inches! Reduced wattage housings are useful in meeting watts per square foot requirements. Housings are available with magnetic or electronic transformers.

CONSTRUCTION

Plastic Frame: 0.040 steel frame with integral bar hanger brackets. Brackets can accommodate longer 27" accessory flat bar hangers. Shipping screw installed to provide extra security for transformer during shipment - remove before installation

Housing: 0.035 white baked enamel one-piece drawn steel. Adjustable for ceiling thickness up to 1-1/4".

Minimum Clearance: "IC" Housings are direct contact rated; no minimum clearance is required

Air Flow Restriction: Housing has factory installed gaskets to restrict airflow from room into ceiling plenum to <2CFM (cubic feet per minute) in accordance with ASTM-283 Air-Tight requirements.

Bar Hangers: Two 13-3/4" to 24-1/2" adjustable bar hangers with captive nails are included on frame. Hanger bars have T-Bar slot and alignment feet. Bar hangers are parallel to junction box, but can be repositioned 90° perpendicular to junction box if desired. "L" Shaped bar hanger foot to align to bottom of construction joist. A T-Bar notch allows easy installation in a suspended ceiling.

Junction Box: Prewired 25 cubic inch 0.060" thick galvanized steel, with seven 1/2" knockouts, four Romex® pryouts, and snap on cover. All leads are #18AWG wire, the ground wire is connected to the bottom, and quick connectors are supplied on all leads. Through branch circuit wiring, (4-in, 4-out).

Transformer:

Electronic: Thermally protected, single tap input voltage available in 12V 60Hz with short circuit protection. Approved for use with LED lamps.

Magnetic: Thermally protected, single tap input voltage available in 12V 60Hz. Class H.

ELECTRICAL

Input Voltage: 120V

Output Voltage: 12V

Socket: Bi-Pin GU5.3 socket with heat shield

Wattage: 50W max.

(Can be labeled for lower wattages - Consult Factory)

Lamp: MR16 (not included)

Transformer: Electronic or Magnetic (must specify)

COMPATIBLE TRIMS

NL-3310 Round Adjustable Baffle

NL-3312 Round Adjustable Reflector

NL-3320 Round Metal Trim with 1" Pinhole

NL-3345 Round Adjustable Slot Aperture

NL-3365 Round Adjustable Gimbal

NL-3318 Round Eyeball with Baffle

NL-3348 Round Wall Wash with Baffle

NL-3325 Round Frosted Dome Lens (Wet Listed)

NL-3326 Round Flat Lens (Wet Listed)

NL-3410 Square with Round Baffle

NL-3412 Square with Round Reflector

NL-3420 Square Pinhole

OPTIONAL ACCESSORIES

NRA-28 - 27" Flat Bar Hangers

NRA-36 - Replacement socket with heat shield

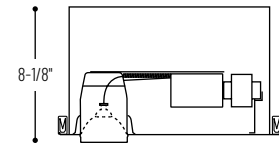
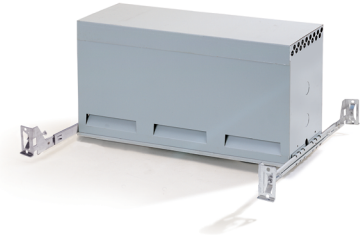
NET-EMIFILTER -EMI Filter

LABELS AND LISTINGS

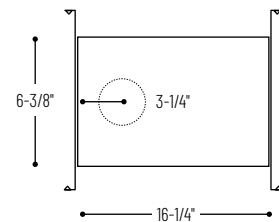
- cULus Listed for Damp Location w/ Feed Through
- Wet Location when used with designated trims
- Meets or exceeds ASTM-283 Air-Tight Requirements



PRODUCT IMAGES & DIMENSIONS



3-1/8"
Ceiling Cut-Out



TRUE 3" IC Air-Tight Low Voltage New Construction Housing

Catalog No.

NLIC-301AT = TRUE 3" IC Air-Tight Low Voltage New Construction Housing, 120V Magnetic, 50W max.

NLIC-301AT/IEL = TRUE 3" IC Air-Tight Low Voltage New Construction Housing, 120V Electronic, 3W-50W
(use with EMI filter for FCC Class B compliance)

Optional Accessories

Catalog No.

NRA-28 = 27" Flat Bar Hangers

NRA-36 = Replacement socket with heat shield

NET-EMIFILTER = EMI Filter

Example: **NLIC-301AT** = TRUE 3" IC Air-Tight Low Voltage New Construction Housing, 120V Magnetic, 50W max.