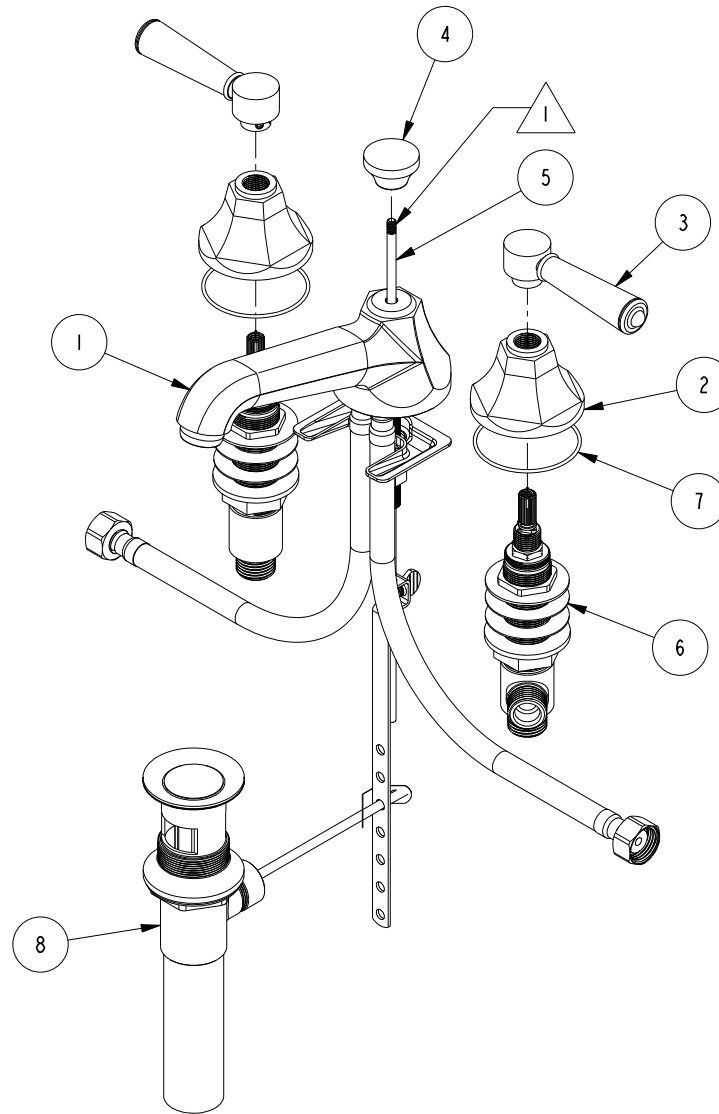


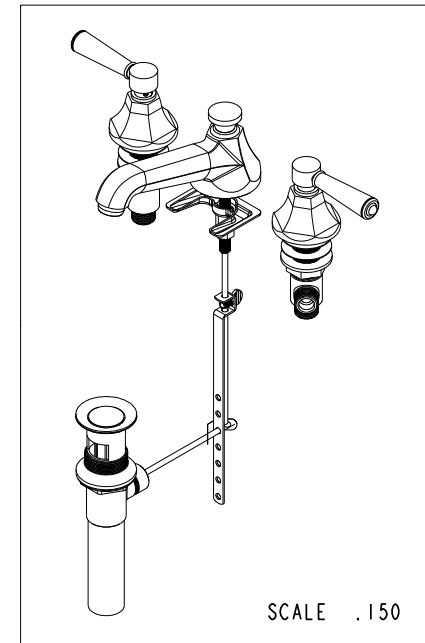
NOTES:

1 APPLY LOCTITE 680 OR EQUIVALENT.



BILL OF MATERIAL (CURRENT LEVEL)

ITEM	PT/ASSY	DESCRIPTION	TYPE	QTY.
1	3-346	ASSY, SPOUT	ASSEMBLY	1
2	10960	HEX ESCUTCHEON	PART	2
3	2-279	TAPERED LEVER HNDL ASM	ASSEMBLY	2
4	10961	SMOOTH POP - UP KNOB	PART	1
5	10288	3/16" POP UP ROD	PART	1
6	1-525	W/S VALVE INSTALLATION	ASSEMBLY	1
7	91386	O-RING, #2-034, EPDM, 65-75 DURO	PART	2
8	325	POP UP ASSEMBLY	ASSEMBLY	1



COPYRIGHT 2005 BRASSTECH, INC. THESE DRAWINGS AND THE DESIGNS DEPICTED HEREIN ARE THE PROPRIETARY PROPERTY OF BRASSTECH. ANY USE OR REPRODUCTION IS SUBJECT TO THE EXPRESS APPROVAL OF BRASSTECH. UNAUTHORIZED USE IS STRICTLY PROHIBITED. ALL RIGHTS RESERVED.

BRASSTECH
INCORPORATED

2001 E. CARNEGIE AVE.
SANTA ANA, CA 92705
(949) 417-5207

WIDESPREAD FAUCET

ASSY. NO.
1200

SCALE .250

REF. -

SHEET 1 OF 2

C	EN-2266	04/04/13
B	EN-1616	09/13/10
A	EO-1015	06/10/08
-	RELEASED	-
REV	REV DESC	DATE

SPECIFICATION DWG

The drawing shows three faucet models: a single-lever model on the left, a ball-and-stem model in the middle, and a single-lever model with a curved spout on the right. Dimensions are provided for each model, including spout reach, height, and stem length. The middle model includes a note for the required stem length from the deck. The right model includes a note for the required stem length from the deck. The bottom model includes a note for the required stem length from the deck.

Dimensions:

- Left Model: Spout reach 3-3/8", Height 2-1/4", Stem diameter Ø1", Stem length 2-9/16", Total height 3-3/4".
- Middle Model: Spout reach 4 TO 10", Height 2-11/16", Stem diameter Ø3/8", Stem length 3-1/16", Total height 2-1/2".
- Right Model: Spout reach 6-1/16", Height 3", Stem diameter Ø3/16", Stem length 10-3/8", Total height 5-5/8".

Notes:

- 2-1/4" AMOUNT OF STEM REQ. FROM DECK
- 1-7/16"
- 1/2" NPSM

Dimensions:

- 6-1/16"
- 3"
- 10-3/8"
- 5-5/8"

Dimensions:

- 3-3/8"
- 4 TO 10"
- 4 TO 10"
- 2-1/4"
- 2-11/16"
- 2-1/2"
- Ø2-3/8"
- Ø1"
- 2-9/16"
- 3-3/4"
- Ø3/8"
- 3-1/16"
- 1/2" NPSM
- Ø3/16"

Dimensions:

- 3-3/8"
- 4 TO 10"
- 4 TO 10"
- 2-1/4"
- 2-11/16"
- 2-1/2"
- Ø2-3/8"
- Ø1"
- 2-9/16"
- 3-3/4"
- Ø3/8"
- 3-1/16"
- 1/2" NPSM
- Ø3/16"

Dimensions:

- 6-1/16"
- 3"
- 10-3/8"
- 5-5/8"

Dimensions:

- 1-7/16"

Dimensions:

- 1/2" NPSM

Dimensions:

- 3-3/8"
- 4 TO 10"
- 4 TO 10"
- 2-1/4"
- 2-11/16"
- 2-1/2"
- Ø2-3/8"
- Ø1"
- 2-9/16"
- 3-3/4"
- Ø3/8"
- 3-1/16"
- 1/2" NPSM
- Ø3/16"

Dimensions:

- 6-1/16"
- 3"
- 10-3/8"
- 5-5/8"

Dimensions:

- 1-7/16"

Dimensions:

- 1/2" NPSM

Dimensions:

- 3-3/8"
- 4 TO 10"
- 4 TO 10"
- 2-1/4"
- 2-11/16"
- 2-1/2"
- Ø2-3/8"
- Ø1"
- 2-9/16"
- 3-3/4"
- Ø3/8"
- 3-1/16"
- 1/2" NPSM
- Ø3/16"

Dimensions:

- 6-1/16"
- 3"
- 10-3/8"
- 5-5/8"

Dimensions:

- 1-7/16"

Dimensions:

- 1/2" NPSM

Dimensions:

- 3-3/8"
- 4 TO 10"
- 4 TO 10"
- 2-1/4"
- 2-11/16"
- 2-1/2"
- Ø2-3/8"
- Ø1"
- 2-9/16"
- 3-3/4"
- Ø3/8"
- 3-1/16"
- 1/2" NPSM
- Ø3/16"

Dimensions:

- 6-1/16"
- 3"
- 10-3/8"
- 5-5/8"

Dimensions:

- 1-7/16"

Dimensions:

- 1/2" NPSM

Dimensions:

- 3-3/8"
- 4 TO 10"
- 4 TO 10"
- 2-1/4"
- 2-11/16"
- 2-1/2"
- Ø2-3/8"
- Ø1"
- 2-9/16"
- 3-3/4"
- Ø3/8"
- 3-1/16"
- 1/2" NPSM
- Ø3/16"

Dimensions:

- 6-1/16"
- 3"
- 10-3/8"
- 5-5/8"

Dimensions:

- 1-7/16"

Dimensions:

- 1/2" NPSM

Dimensions:

- 3-3/8"
- 4 TO 10"
- 4 TO 10"
- 2-1/4"
- 2-11/16"
- 2-1/2"
- Ø2-3/8"
- Ø1"
- 2-9/16"
- 3-3/4"
- Ø3/8"
- 3-1/16"
- 1/2" NPSM
- Ø3/16"

Dimensions:

- 6-1/16"
- 3"
- 10-3/8"
- 5-5/8"

Dimensions:

- 1-7/16"

Dimensions:

- 1/2" NPSM

Dimensions:

- 3-3/8"
- 4 TO 10"
- 4 TO 10"
- 2-1/4"
- 2-11/16"
- 2-1/2"
- Ø2-3/8"
- Ø1"
- 2-9/16"
- 3-3/4"
- Ø3/8"
- 3-1/16"
- 1/2" NPSM
- Ø3/16"

Dimensions:

- 6-1/16"
- 3"
- 10-3/8"
- 5-5/8"

Dimensions:

- 1-7/16"

Dimensions:

- 1/2" NPSM

Dimensions:

- 3-3/8"
- 4 TO 10"
- 4 TO 10"
- 2-1/4"
- 2-11/16"
- 2-1/2"
- Ø2-3/8"
- Ø1"
- 2-9/16"
- 3-3/4"
- Ø3/8"
- 3-1/16"
- 1/2" NPSM
- Ø3/16"

Dimensions:

- 6-1/16"
- 3"
- 10-3/8"
- 5-5/8"

Dimensions:

- 1-7/16"

Dimensions:

- 1/2" NPSM

Dimensions:

- 3-3/8"
- 4 TO 10"
- 4 TO 10"
- 2-1/4"
- 2-11/16"
- 2-1/2"
- Ø2-3/8"
- Ø1"
- 2-9/16"
- 3-3/4"
- Ø3/8"
- 3-1/16"
- 1/2" NPSM
- Ø3/16"

Dimensions:

- 6-1/16"
- 3"
- 10-3/8"
- 5-5/8"

Dimensions:

- 1-7/16"

Dimensions:

- 1/2" NPSM

Dimensions:

- 3-3/8"
- 4 TO 10"
- 4 TO 10"
- 2-1/4"
- 2-11/16"
- 2-1/2"
- Ø2-3/8"
- Ø1"
- 2-9/16"
- 3-3/4"
- Ø3/8"
- 3-1/16"
- 1/2" NPSM
- Ø3/16"

Dimensions:

- 6-1/16"
- 3"
- 10-3/8"
- 5-5/8"

Dimensions:

- 1-7/16"

Dimensions:

- 1/2" NPSM

Dimensions:

- 3-3/8"
- 4 TO 10"
- 4 TO 10"
- 2-1/4"
- 2-11/16"
- 2-1/2"
- Ø2-3/8"
- Ø1"
- 2-9/16"
- 3-3/4"
- Ø3/8"
- 3-1/16"
- 1/2" NPSM
- Ø3/16"

Dimensions:

- 6-1/16"
- 3"
- 10-3/8"
- 5-5/8"

Dimensions:

- 1-7/16"

Dimensions:

- 1/2" NPSM

Dimensions:

- 3-3/8"
- 4 TO 10"
- 4 TO 10"
- 2-1/4"
- 2-11/16"
- 2-1/2"
- Ø2-3/8"
- Ø1"
- 2-9/16"
- 3-3/4"
- Ø3/8"
- 3-1/16"
- 1/2" NPSM
- Ø3/16"

Dimensions:

- 6-1/16"
- 3"
- 10-3/8"
- 5-5/8"

Dimensions:

- 1-7/16"

Dimensions:

- 1/2" NPSM

Dimensions:

- 3-3/8"
- 4 TO 10"
- 4 TO 10"
- 2-1/4"
- 2-11/16"
- 2-1/2"
- Ø2-3/8"
- Ø1"
- 2-9/16"
- 3-3/4"
- Ø3/8"
- 3-1/16"
- 1/2" NPSM
- Ø3/16"

Dimensions:

- 6-1/16"
- 3"
- 10-3/8"
- 5-5/8"

Dimensions:

- 1-7/16"

Dimensions:

- 1/2" NPSM

Dimensions:

- 3-3/8"
- 4 TO 10"
- 4 TO 10"
- 2-1/4"
- 2-11/16"
- 2-1/2"
- Ø2-3/8"
- Ø1"
- 2-9/16"
- 3-3/4"
-

COPYRIGHT 2005 BRASSTECH, INC. THESE DRAWINGS AND THE DESIGNS DEPICTED HEREIN ARE THE PROPRIETARY PROPERTY OF BRASSTECH. ANY USE OR REPRODUCTION IS SUBJECT TO THE EXPRESS APPROVAL OF BRASSTECH. UNAUTHORIZED USE IS STRICTLY PROHIBITED. ALL RIGHTS RESERVED.

DWG NO.		1200		REV	C
SCALE . 350		REF. -	SHEET 2	OF	2