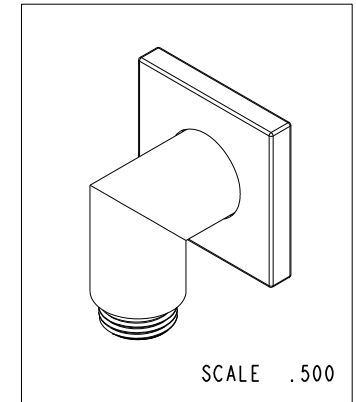
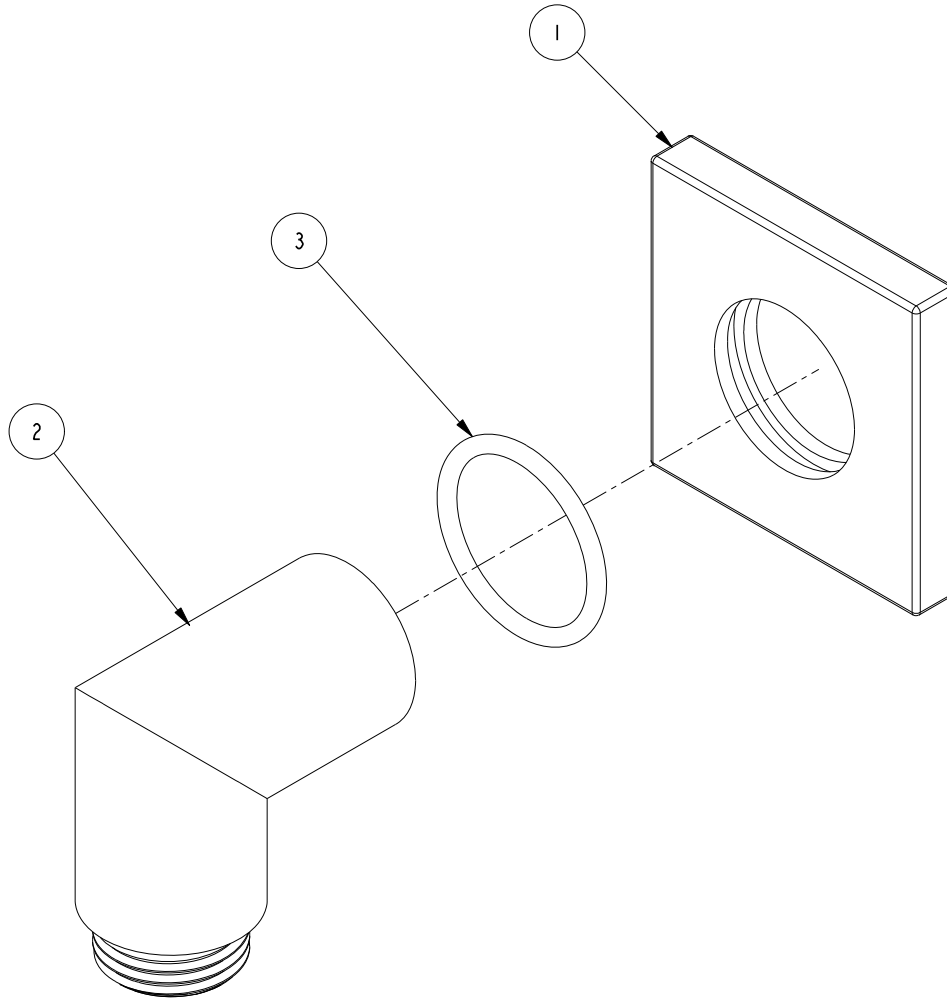


NOTES:

- 1. FIT / FORM / FUNCTION SHALL FOLLOW PS-E.008.
- APPLY THIN COAT OF SILICON GREASE ONTO ALL "O" RINGS BEFORE INSTALLATION

BILL OF MATERIAL (CURRENT LEVEL)

ITEM	PT/ASSY	DESCRIPTION	TYPE	QTY.
1	13153	ESCUTCHEON PLATE, BODY SPRAY	PART	1
2	80048	SUPPLY ELBOW	PART	1
3	91073	O-RING, #2-120, EPDM, 65-75 DURO	PART	1



ZONE	REV	DESCRIPTION	DATE	APPROVED
-	A	EN-3772	12/21/18	J.M.
-	-	EN-1735	06/22/11	-

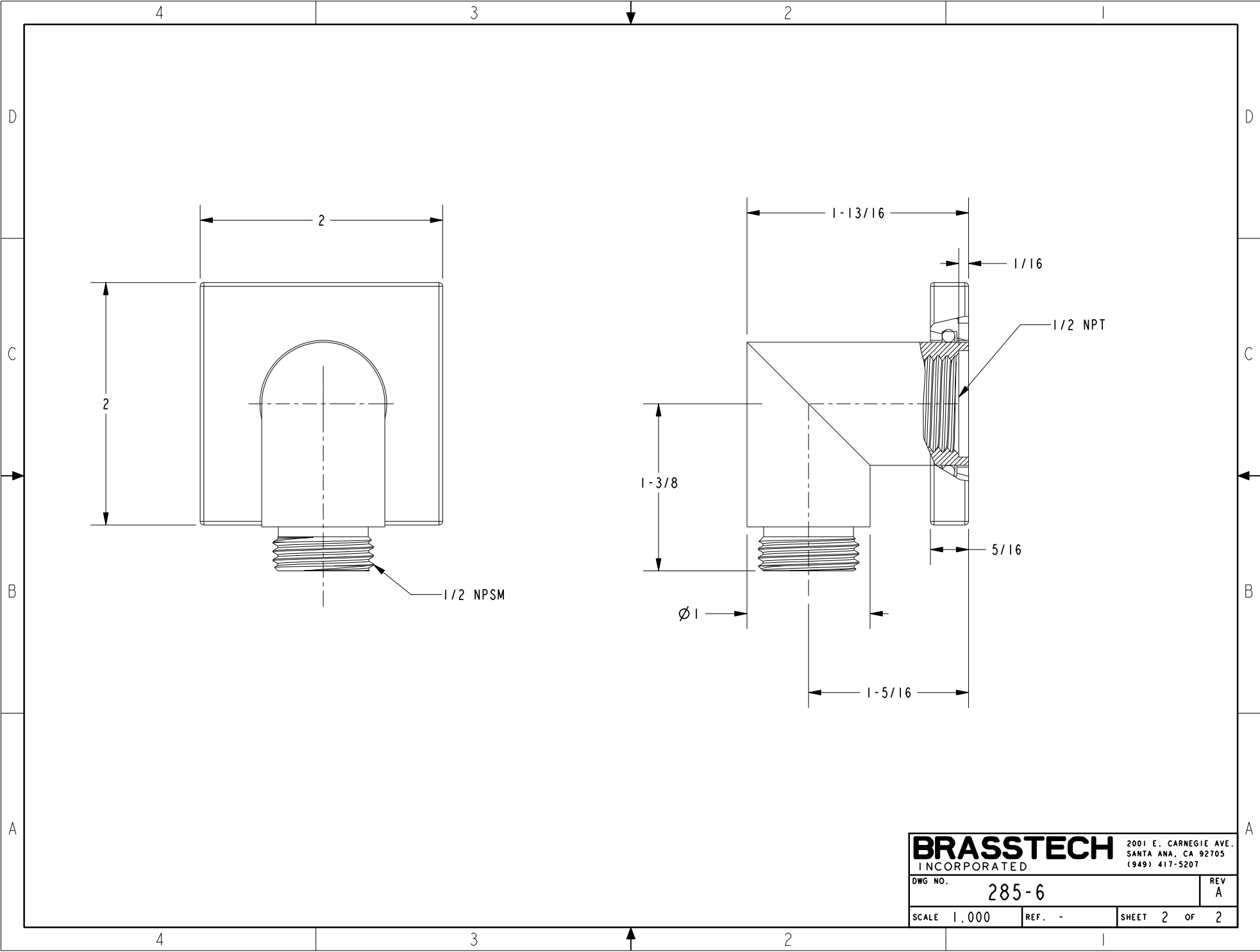
COPYRIGHT 2005 BRASSTECH, INC. THESE DRAWINGS AND THE DESIGNS DEPICTED HEREIN ARE THE PROPRIETARY PROPERTY OF BRASSTECH. ANY USE OR REPRODUCTION IS SUBJECT TO THE EXPRESS APPROVAL OF BRASSTECH. UNAUTHORIZED USE IS STRICTLY PROHIBITED. ALL RIGHTS RESERVED.

TESTING	-	-	-
ASSEMBLY	-	-	-
PLATING	-	-	-
POLISHING	-	NEXT ASSY	USED ON
MACHINING	-	APPLICATION	
TOOLING FIXTURE #	REMOVE ALL BURRS AND SHARP EDGES		

UNITS ARE: INCHES [MM]
 TOLERANCES ARE:
 FRACTIONS DECIMALS ANGLES
 $\pm 1/16"$.X $\pm .1$ [2.5] $\pm 1^\circ$
 .XX $\pm .06$ [1.5]
 (X.XXX) DENOTES CRITICAL DIMS.
 ALL THREADS ARE CRITICAL

BRASSTECH 2001 CARNEGIE AVE.
 INCORPORATED SANTA ANA, CA 92705
 (949) 417-5207

DWG NO. 285-6		REV A
SCALE 1.000	REF. -	SHEET 1 OF 2



BRASSTECH		2001 E. CARNEGIE AVE.	
INCORPORATED		SANTA ANA, CA 92705	
		(949) 417-5207	
DWG NO.	285-6	REV	A
SCALE 1.000	REF. -	SHEET 2	OF 2