

NOTES:

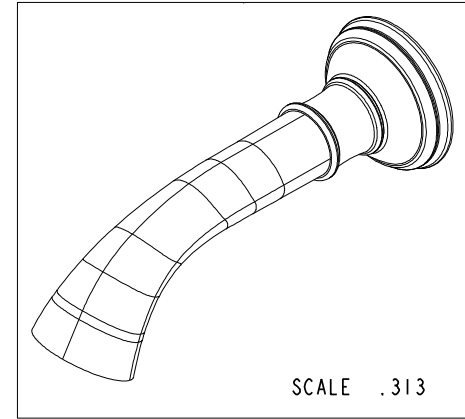
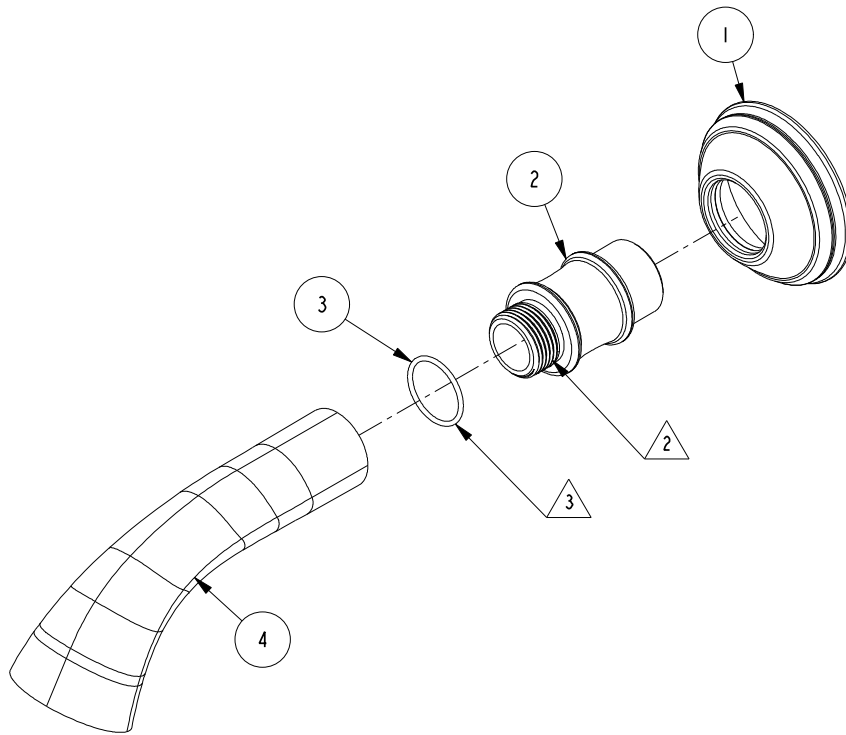
1. TO INSPECT ASSEMBLY, FOLLOW FIRST ARTICLE AND IN PROCESS INSPECTION SHEET.

2 APPLY PERMANENT THREAD LOCKER (LOCTITE 680)

3 APPLY THIN COAT OF SILICON GREASE FOR ALL 'O' RINGS BEFORE INSTALLATION

BILL OF MATERIAL (CURRENT LEVEL)

ITEM	PT/ASSY	DESCRIPTION	TYPE	QTY.
1	2-660	ESCUTHEON, WALL TUB	ASSEMBLY	1
2	11605	R/T SPOUT CONNECTOR	PART	1
3	91372	O-RING, #2- 021, EPDM, 65-75 DURO, NSF 61	PART	1
4	30293	R/T SPOUT	PART	1



ZONE	REV	DESCRIPTION	DATE	APPROVED	TESTING	ASSEMBLY	PLATING	POLISHING	MACHINING	TOOLING FIXTURE #	APPLICATION
-	A	EN-4300ii	01/22/21	R. S.	-	-	-	-	-	-	-
-	-	EN-1266	04/20/10	-	-	-	-	-	-	-	USED ON
-	-	-	-	-	-	-	-	-	-	-	REMOVE ALL BURRS AND SHARP EDGES

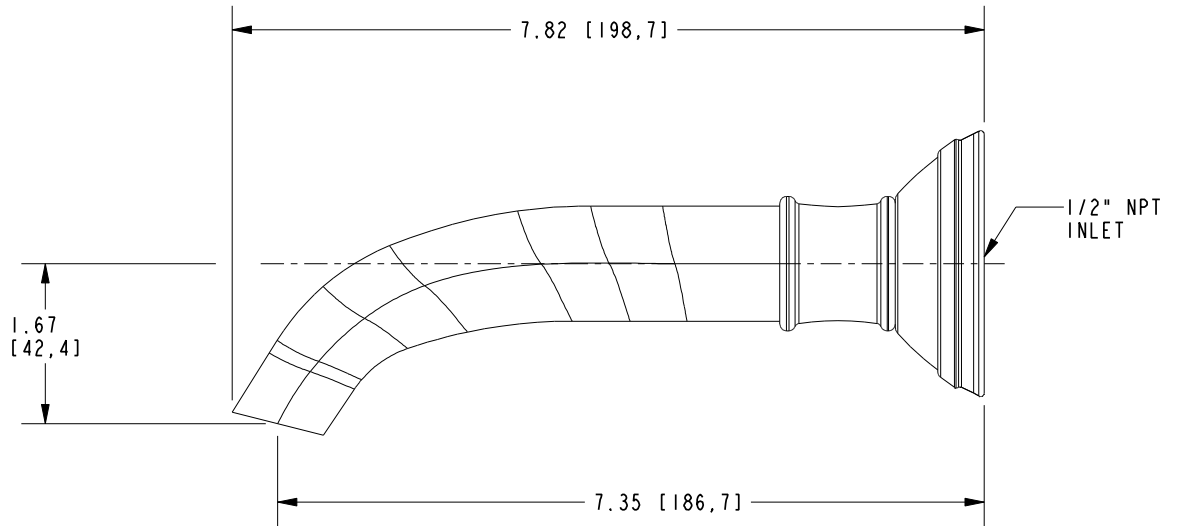
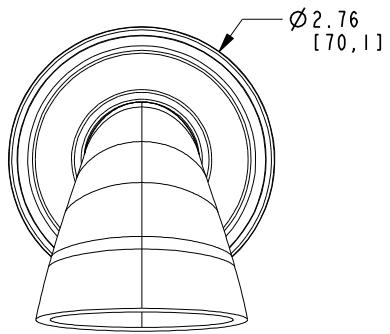
COPYRIGHT 2005 BRASSTECH, INC. THESE DRAWINGS AND THE DESIGNS DEPICTED HEREIN ARE THE PROPRIETARY PROPERTY OF BRASSTECH. ANY USE OR REPRODUCTION IS SUBJECT TO THE EXPRESS APPROVAL OF BRASSTECH. UNAUTHORIZED USE IS STRICTLY PROHIBITED. ALL RIGHTS RESERVED.

UNITS ARE: INCHES [MM]	
TOLERANCES ARE:	
FRACTIONS	DECIMALS
±1/16"	.X ±.1 [2.5]
	.XX ±.06 [1.5]
(X.XXX) DENOTES CRITICAL DIMS.	
ALL THREADS ARE CRITICAL	
DRAWN	04/20/10
CHECKED	04/20/10
APPROVED	04/20/10

BRASSTECH 2001 CARNEGIE AVE.
INCORPORATED SANTA ANA, CA 92705
(949) 417-5207

SPOUT ASM W/ESCUTCHEOM
WALL TUB

DWG NO.	REV
3-383	A
SCALE .375	SHEET 1 OF 2



BRASSTECH		2001 CARNEGIE AVE. SANTA ANA, CA 92705 (949) 417-5207	
INCORPORATED			
DWG NO.	3-383	REV	A
SCALE	.500	REF.	-
		SHEET	2 OF 2