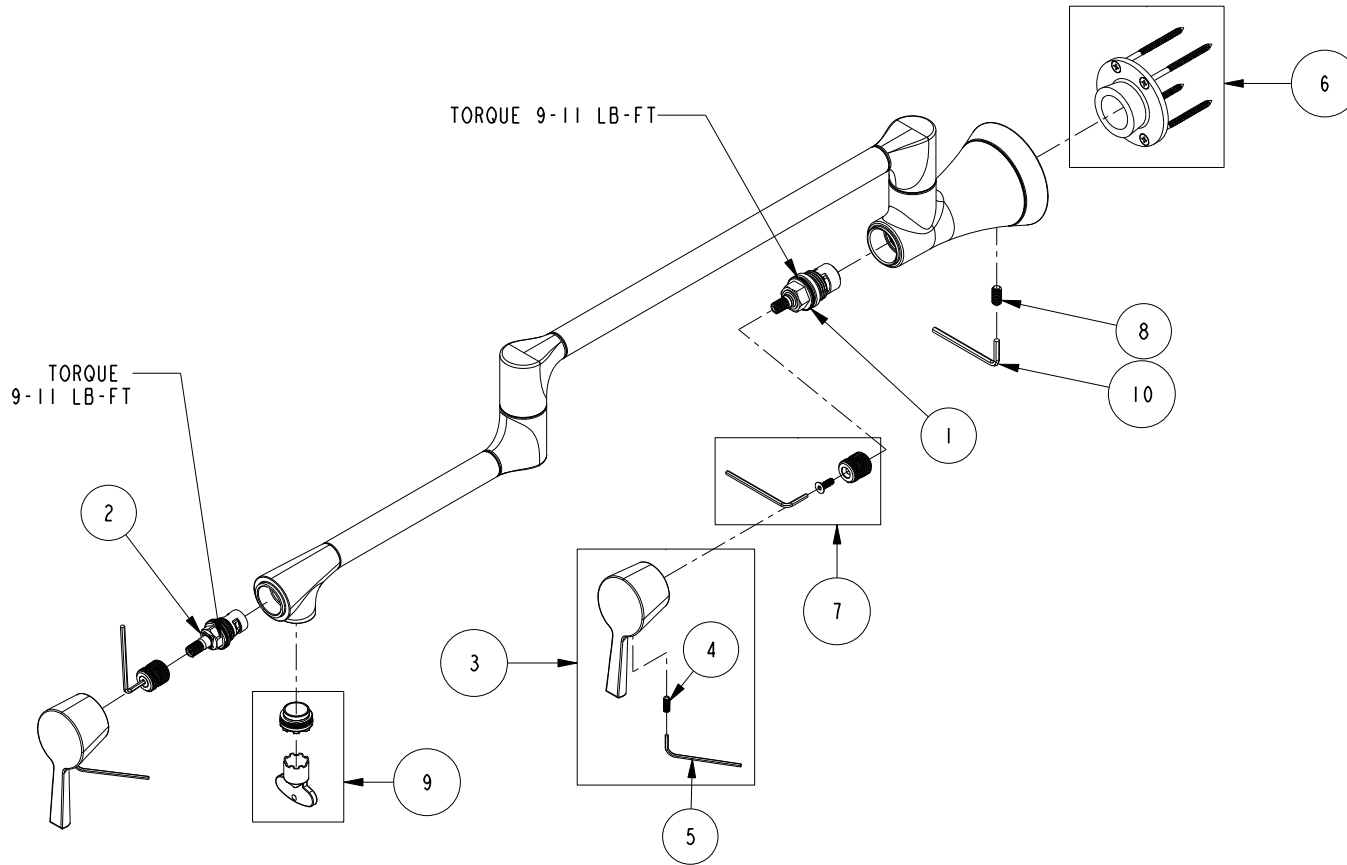


REPLACEMENT PARTS

ITEM	PT/ASSY	SPECIFY FINISH	DESCRIPTION
1	1-326		W/S CARTRIDGE FRICTION - HOT
2	1-437		CARTR 3/8 HOT 1/4 TR
3	20-778	YES	HANDLE LEVER ASM
4	92489		SCRW, 8-32 X 7/16 SKT HD CUP PT SS
5	10192		HEX KEY TOOL, #8 5/64
6	10-322		Mounting Flange Asm
7	10-321		CARTRIDGE STEM ADAPTER KIT
8	92245		SCRW, 1/4-20 X 1/2 SKT HD CUP PT SS
9	10-323		AERATOR WITH KEY
10	92422		HEX KEY, 1/8" ALLOY STEEL



VESSA TRANSITIONAL WALL MOUNT POT FILLER "E"
2500-5503

REV H EN-4682-1 08/14/23 APPROVED RS

NEWPORT BRASS.

t: 949.417.5207 | www.newportbrass.com