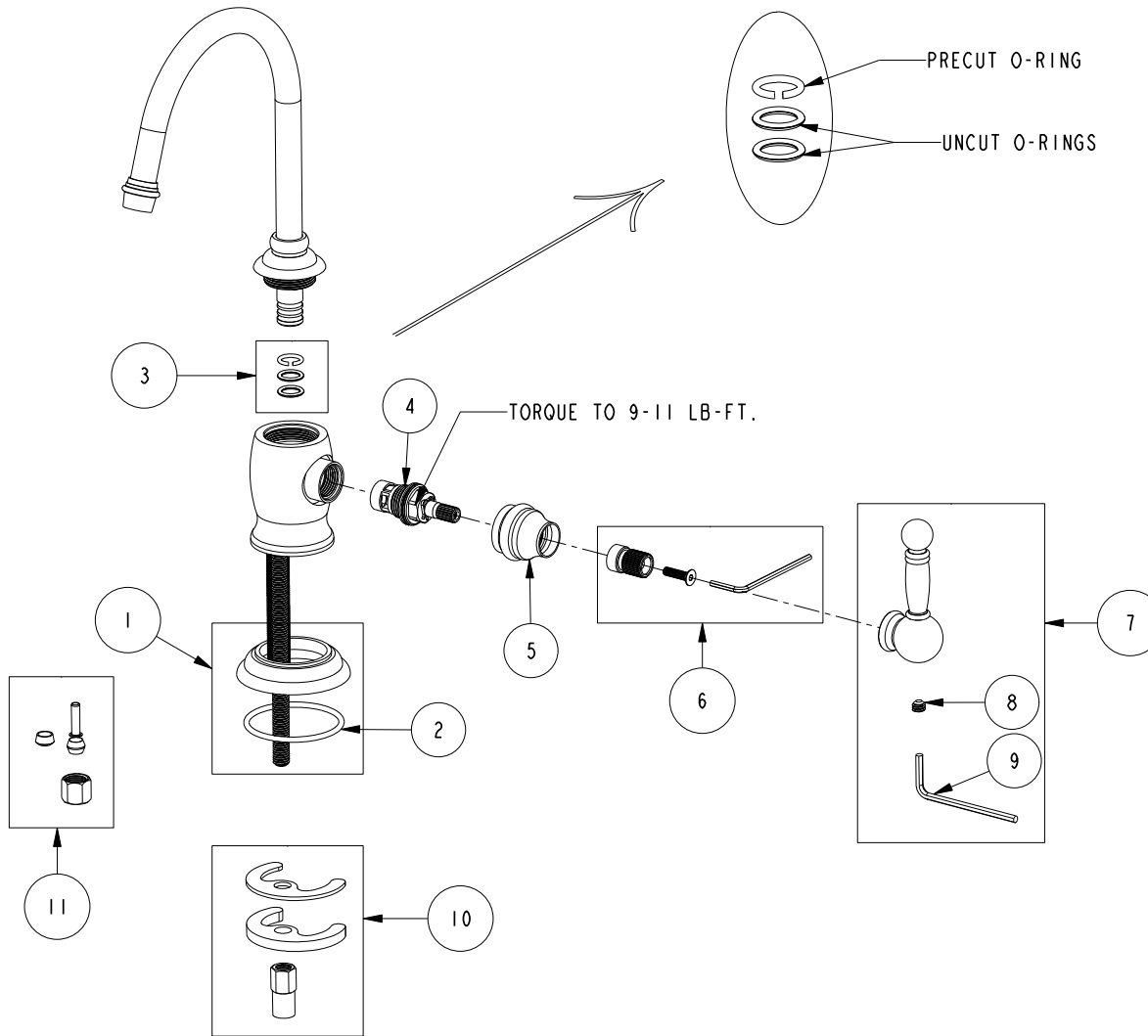


# REPLACEMENT PARTS

ITEM	PT/ASSY	SPECIFY FINISH	DESCRIPTION
1	20-786	YES	ESCUTCHEON ASM
2	91762		O-RING, #2-132, EP, 50 DURO - GREY
3	10-310		WATER DISPENSER SPOUT O-RING KIT
4	1-134		CARTR 3/8 HOT 1/4 TR
5	13661	YES	WATER DISP HDL BONNET (TRAD)
6	10-306		CARTRIDGE STEM ADAPTER KIT
7	20-787	YES	LEVER HANDLE ASM
8	92017		SCRW, 1/4-20 X 3/16 SKT HD CUP PT SS
9	92422		HEX KEY, 1/8" ALLOY STEEL
10	1-491		SPOUT MOUNTING KIT
11	5-007		1/4 COMP KIT



COLD WATER DISP, LEVER TRAD  
107C

REV P EN-EN-4713 04/10/24

**NEWPORT BRASS.**

t: 949.417.5207 | www.newportbrass.com