

4 3 2 1

NOTES:  
1. CUT ALL-THREAD 1/2" SHORTER THAN STEM

**SPECIFICATION DWG**

The drawing includes the following dimensions and labels:

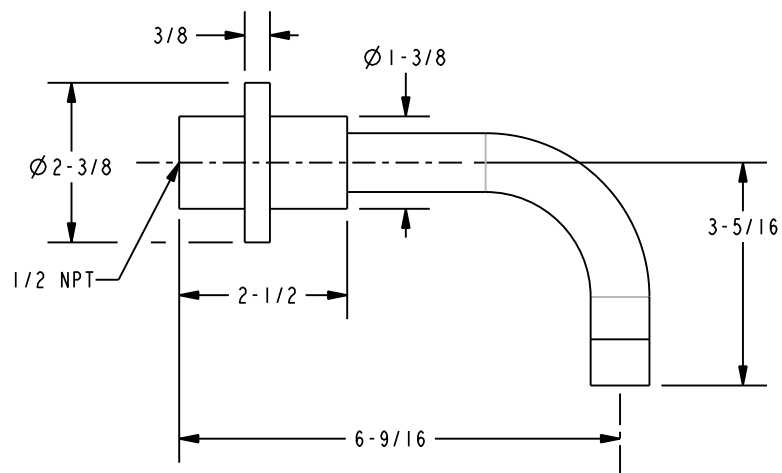
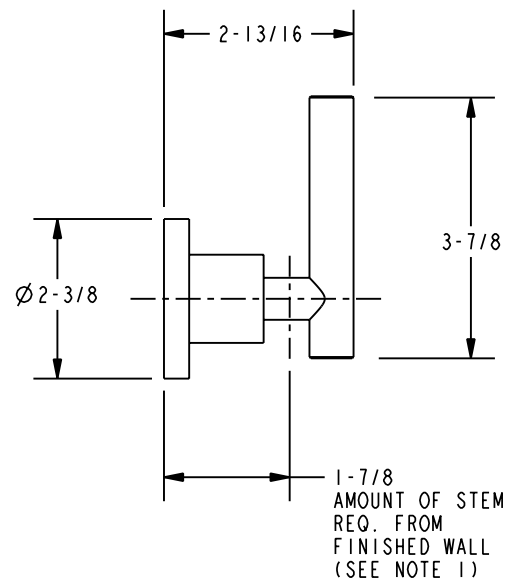
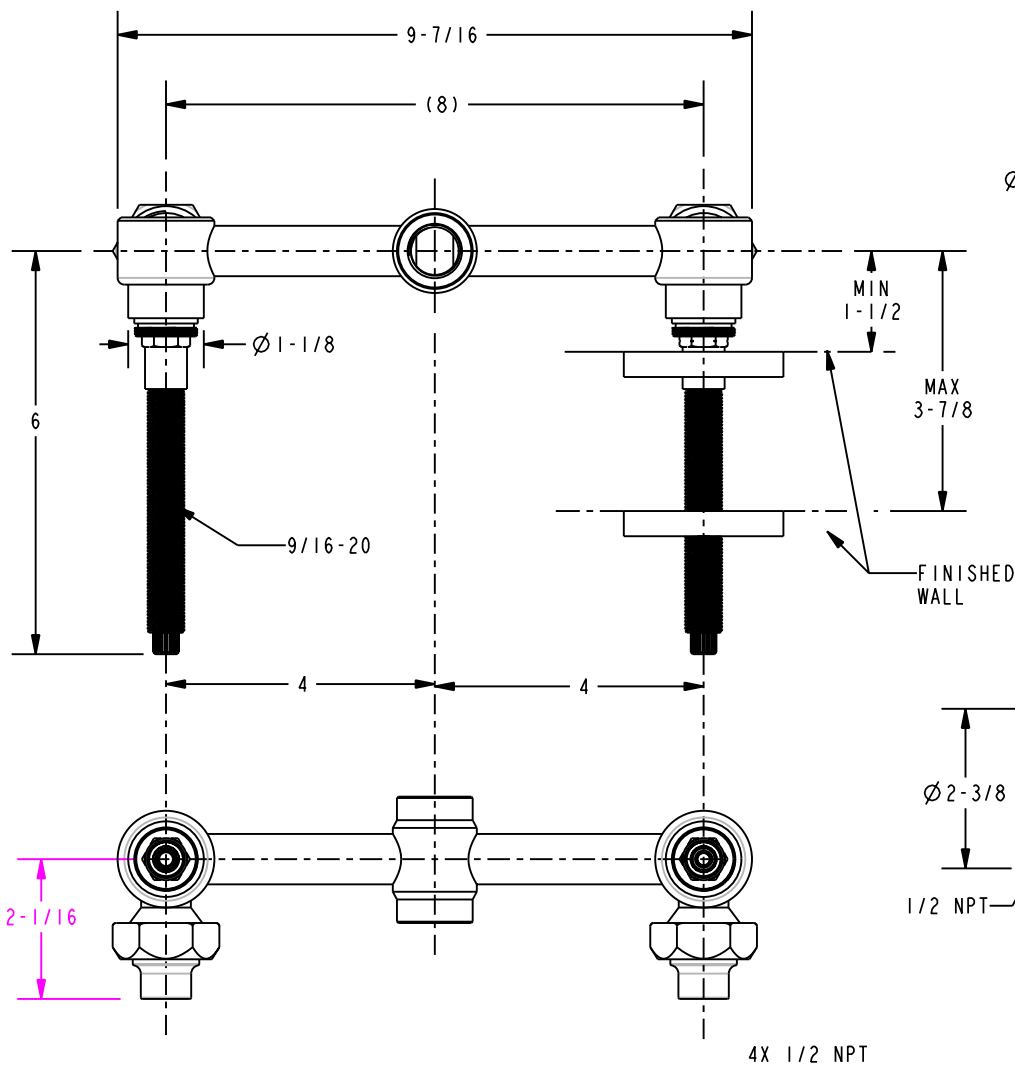
- Front View:** Overall width 9-7/16", mounting hole spacing (8)", stem diameter  $\phi 1-1/8$ ", stem length 6", mounting hole diameter 9/16-20, distance from wall to mounting hole 4", and distance between mounting holes 4".
- Side View:** Mounting hole diameter  $\phi 2-3/8$ ", mounting hole spacing 2-13/16", mounting hole depth 3-7/8", and distance from wall to mounting hole 1-7/8".
- Detail View:** Mounting hole diameter  $\phi 2-3/8$ ", mounting hole spacing 3/8", mounting hole depth 1/2 NPT, mounting hole diameter  $\phi 1-3/8$ ", mounting hole spacing 2-1/2", mounting hole depth 6-9/16", and mounting hole diameter 3-5/16".
- Labels:** MIN 1-1/2", MAX 3-7/8", FINISHED WALL, 4X 1/2 NPT, 2-1/16" (pink dimension), 9/16-20, 1-7/8" AMOUNT OF STEM REQ. FROM FINISHED WALL (SEE NOTE 1).

DIMENSIONS ARE IN INCHES AND AN APPROXIMATION OF A TYPICAL INSTALLATION

<b>BRASSTECH</b> INCORPORATED	2001 E. CARNEGIE AVE. SANTA ANA, CA 92705 (949) 417-5207	TUB WALL FAUCET	ASSY. NO.	995L_SPEC	A	COPYRIGHT ©
			SCALE 0.350	REF. -	SHEET 1 OF 1	

4 3 2 1

1. CUT ALL-THREAD 1/2" SHORTER THAN STEM



DIMENSIONS ARE IN INCHES AND AN APPROXIMATION OF A TYPICAL INSTALLATION

**BRASSTECH** 2001 E. CARNEGIE AVE.  
INCORPORATED SANTA ANA, CA 92705  
(949) 417-5207

TUB WALL FAUCET

ASSY. NO.	995L_SPEC
-----------	-----------

A

SCALE 0.350

REF. -

SHEET | OF |

COPYRIGHT ©