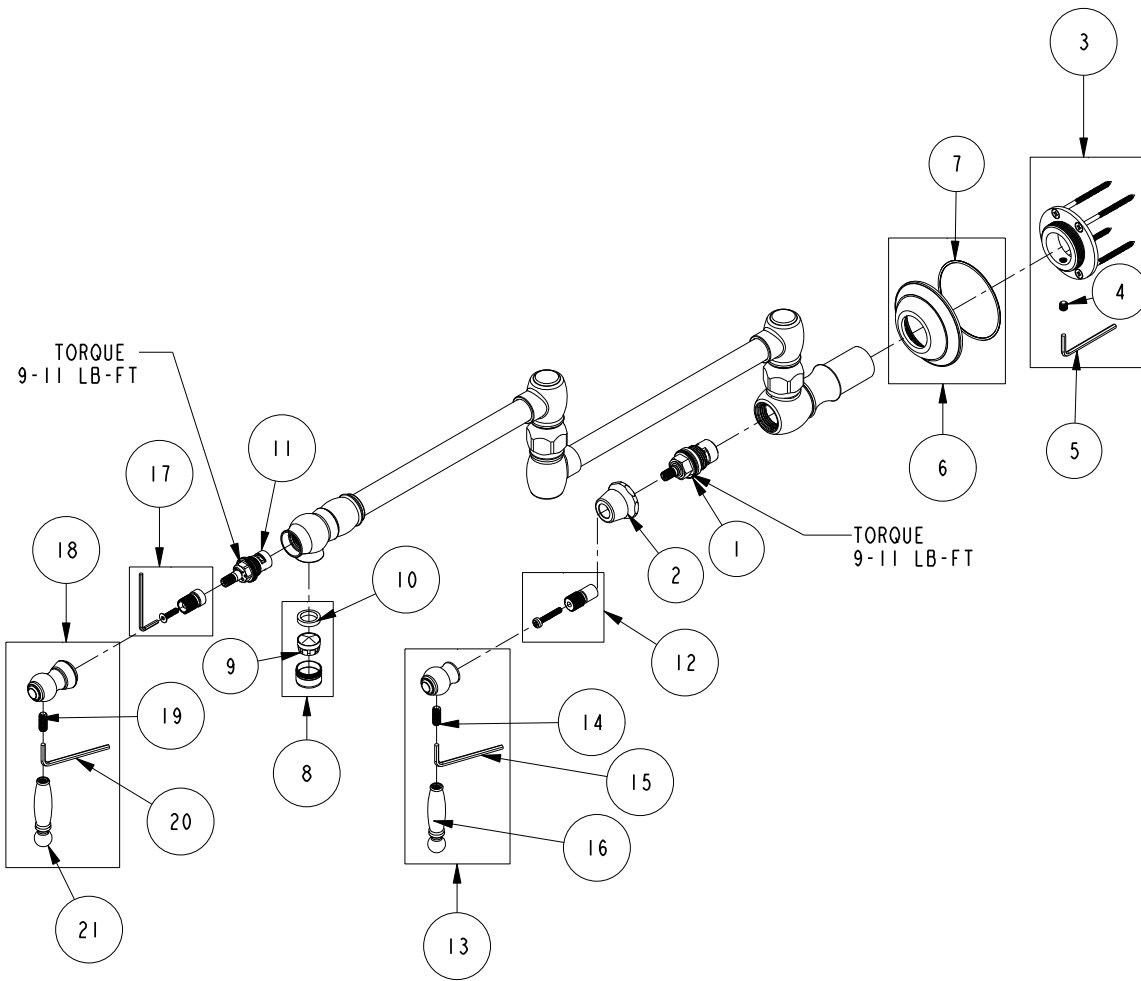


REPLACEMENT PARTS

ITEM	PT/ASSY	SPECIFY FINISH	DESCRIPTION
1	1-326		W/S CARTRIDGE FRICTION - HOT
2	10331	YES	BONNET FOR 933, 934
3	10-313		MOUNTING ASM
4	92231		SCRW, 1/4-20 X 1/4 SKT HD CUP PT SS
5	92422		HEX KEY, 1/8' ALLOY STEEL
6	2-555	YES	FLANGE ASM, TRAD
7	91771		O-RING, #2-038, EPDM, 50 DURO - GREY
8	2-518	YES	AREATOR ASM
9	11346		PERLATOR AERATOR-JR SIZE-FULL FLOW
10	91293		WSHR, 13.7 ID X 18.3 OD X 3.6MM THK, FLT, RUBBER NSF 61
11	1-437		CARTR 3/8 HOT 1/4 TR
12	10-320		CARTRIDGE STEM ADAPTER KIT
13	20-774	YES	HANDLE LEVER ASM
14	92005		SCRW, 1/4-20 X 5/8 SKT HD CUP PT SS
15	92422		HEX KEY, 1/8' ALLOY STEEL
16	11314		HANDLE, LEVER
17	10-312		CARTRIDGE STEM ADAPTER KIT
18	20-775	YES	HANDLE LEVER ASM
19	92005		SCRW, 1/4-20 X 5/8 SKT HD CUP PT SS
20	92422		HEX KEY, 1/8' ALLOY STEEL
21	11314		HANDLE, LEVER



POT FILLER, WALL, LEVER, TRAD
9482

REV J EN-4682-1 08/11/23 APPROVED RS

NEWPORT BRASS.

t: 949.417.5207 | www.newportbrass.com