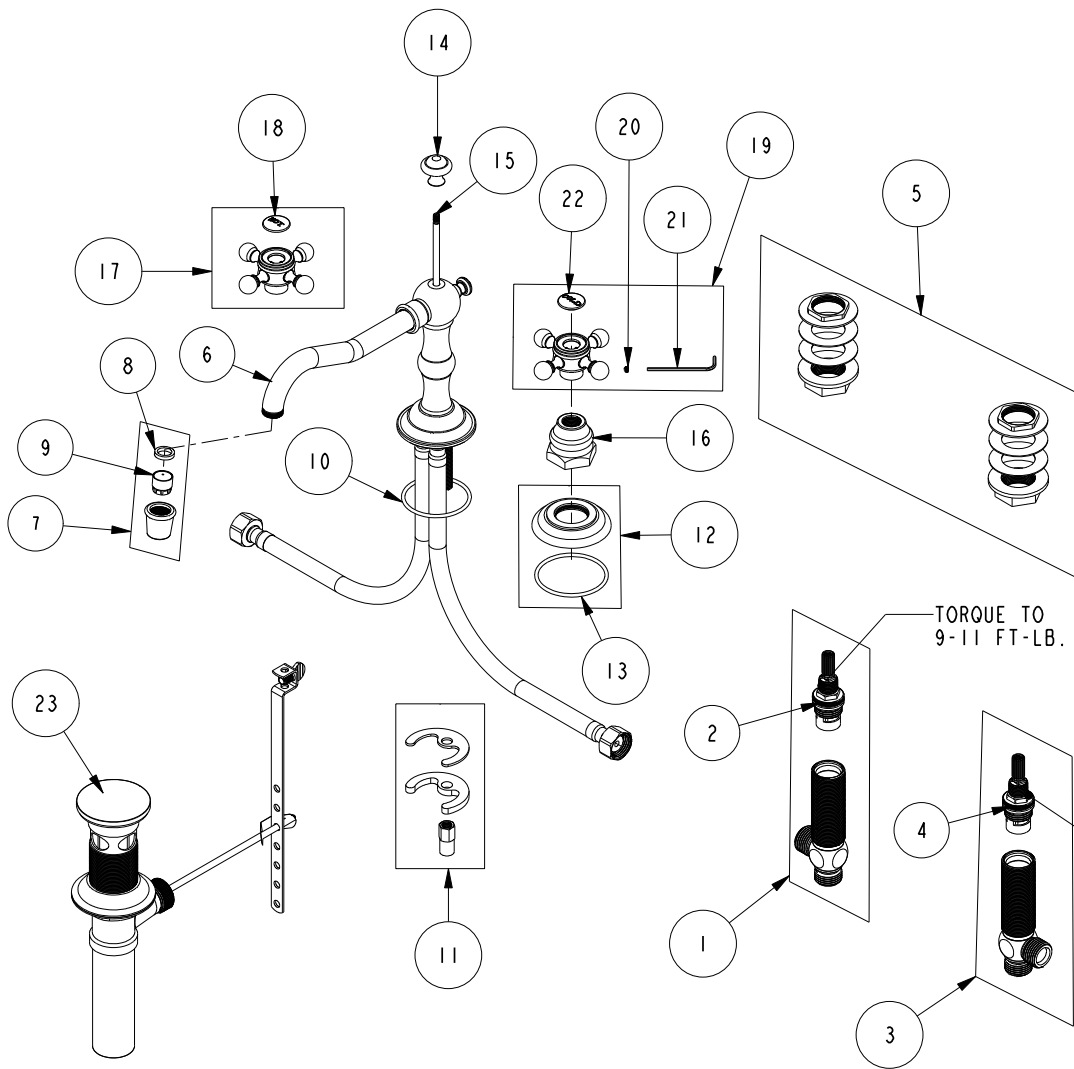


REPLACEMENT PARTS

ITEM	PT/ASSY	SPECIFY FINISH	DESCRIPTION
1	1-527		W/S CART/BODY ASM (HOT)
2	1-002		W/S CARTRIDGE - HOT
3	1-526		W/S CART/BODY ASM (COLD)
4	1-001		W/S CARTRIDGE - COLD
5	1-027		WIDE SPREAD MOUNTING HARDWARE
6	3-360	YES	WIDE SPREAD SPOUT ONLY
7	2-633	YES	AERATOR ASM
8	91265		WSHR, 11 ID X 15 OD X 2.8 MM THK, FLT, RUBBER NSF 61 APPR
9	12402		AERATOR INSERT, TT SIZE, 1.2 GPM
10	91756		O-RING #2-134, EP, 50 DURO - GREY
11	1-491		SPOUT MOUNTING KIT
12	20-681	YES	ESCUTCHEON ASSEMBLY
13	91753		O-RING, # 2-136, EP, 50 DURO - GREY
14	10289	YES	POP-UP KNOB
15	10288	YES	3/16" POP UP ROD
16	10523	YES	HEX ESCUTCHEON BONNET
17	2-141	YES	HANDLE ONLY, HOT
18	1-108		HOT BUTTON ASSEMBLY W/ ADHESIVE
19	2-142	YES	HANDLE ONLY, COLD
20	92000		SCREW 8 - 32 X 1/8 SS
21	10192		HEX KEY TOOL, #8 5/64
22	1-107		COLD BUTTON ASSEMBLY W/ ADHESIVE
23	325	YES	POP UP ASSEMBLY



LAVATORY FAUCET
930

REV J EN-4728 10/23/23 APPROVED RS

NEWPORT BRASS.

t: 949.417.5207 | www.newportbrass.com