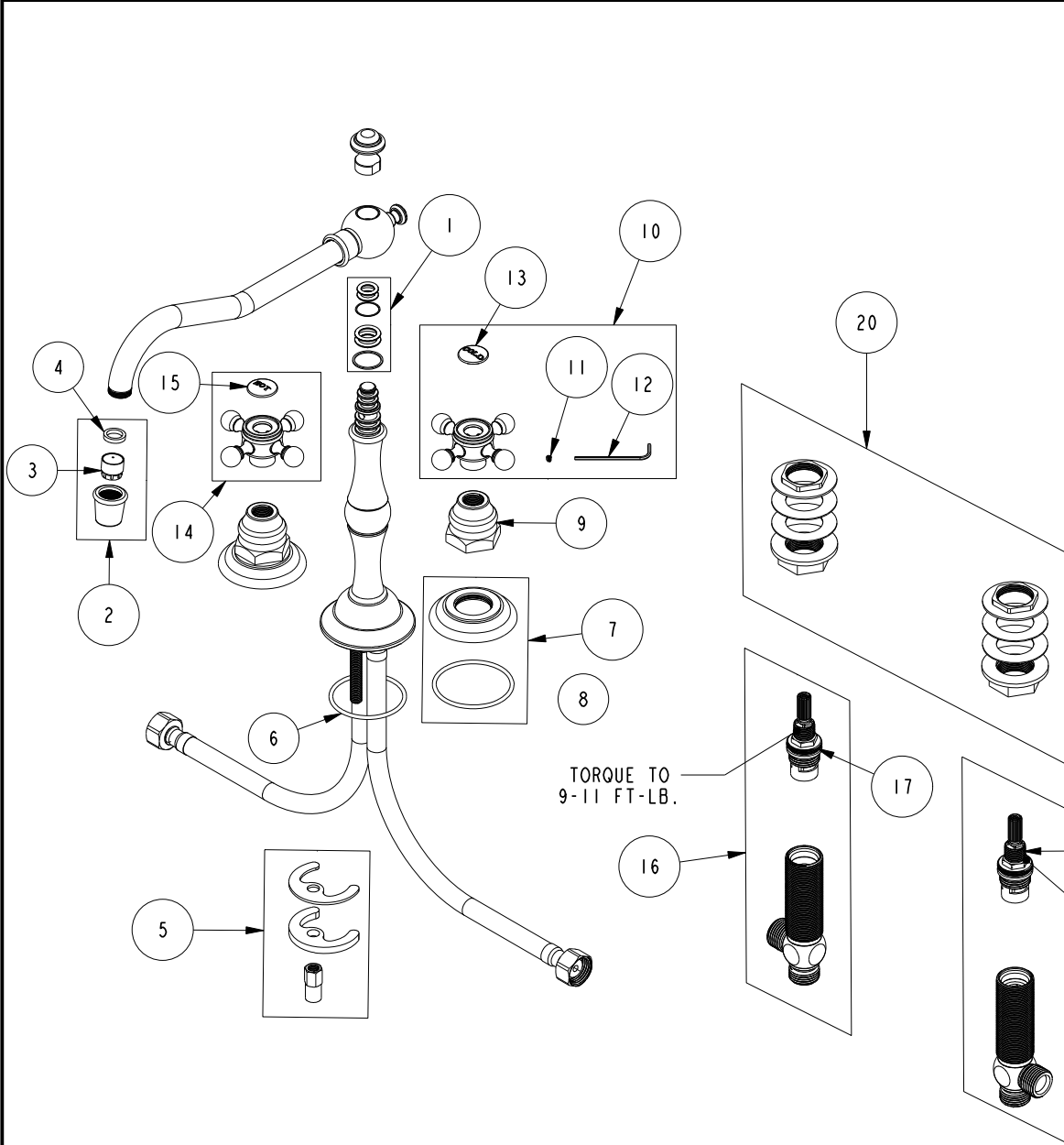


REPLACEMENT PARTS



ITEM	PT/ASSY	SPECIFY FINISH	DESCRIPTION
1	10-302		SPOUT O-RING AND WASHER KIT
2	2-259	YES	AERATOR ASM
3	11917		AERATOR INSERT TT, 1.75 GPM
4	91265		WSHR, 11 ID X 15 OD X 2.8 MM THK, FLT, RUBBER NSF 61 APPR
5	1-491		SPOUT MOUNTING KIT
6	91756		O-RING #2-134, EP, 50 DURO - GREY
7	20-681	YES	ESCUTCHEON ASSEMBLY
8	91753		O-RING, # 2-136, EP, 50 DURO - GREY
9	10523	YES	HEX ESCUTCHEON BONNET
10	2-142	YES	HANDLE ONLY, COLD
11	92000		SCREW 8 - 32 X 1/8 SS
12	10192		HEX KEY TOOL, #8 5/64
13	1-107		COLD BUTTON ASSEMBLY W/ ADHESIVE
14	2-141	YES	HANDLE ONLY, HOT
15	1-108		HOT BUTTON ASSEMBLY W/ ADHESIVE
16	1-527		W/S CART/BODY ASM (HOT)
17	1-002		W/S CARTRIDGE - HOT
18	1-526		W/S CART/BODY ASM (COLD)
19	1-001		W/S CARTRIDGE - COLD
20	1-027		WIDE SPREAD MOUNTING HARDWARE

TORQUE TO 9-11 FT-LB.

TORQUE TO 9-11 FT-LB.

**KITCHEN FAUCET
942**

REV G EN-4748 12/06/23 APPROVED RS

NEWPORT BRASS.

t: 949.417.5207 | www.newportbrass.com