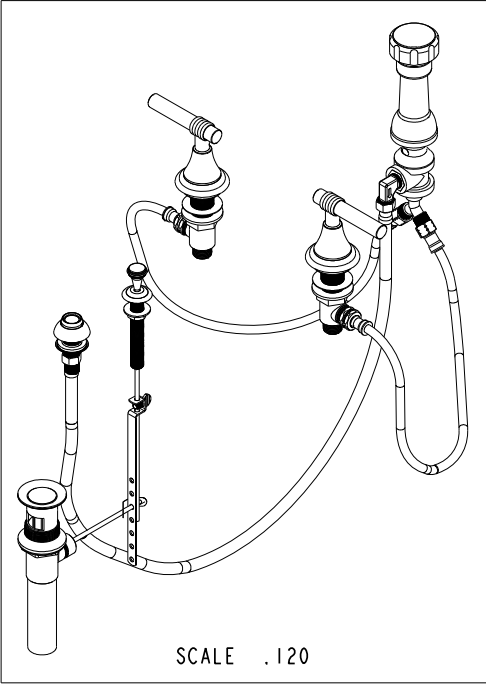


**BILL OF MATERIAL (CURRENT LEVEL)**

ITEM	PT/ASSY	DESCRIPTION	TYPE	QTY.
1	2-235	BIDET DIVERTER / V. BRE	ASSEMBLY	1
2	2-159	POP-UP ROD GUIDE ASSEMBLY	ASSEMBLY	1
3	10288	3/16" POP UP ROD	PART	1
4	2-236	DOUCHE SPRAY ASSEMBLY	ASSEMBLY	1
5	325	POP UP ASSEMBLY	ASSEMBLY	1
6	10021	POP-UP KNOB	PART	1
7	10048	ESCUTCHEON W/S VALVE	PART	2
8	10095	ESCUTCHEON, 900 SERIES	PART	2
9	2-103C	LEVER HANDLE - COLD	ASSEMBLY	1
10	2-103H	LEVER HANDLE - HOT	ASSEMBLY	1
11	1-542	VALVE KIT - BIDET	ASSEMBLY	1
12	91231	O-RING, #2-136, EPDM, 65-75 DURO	PART	2



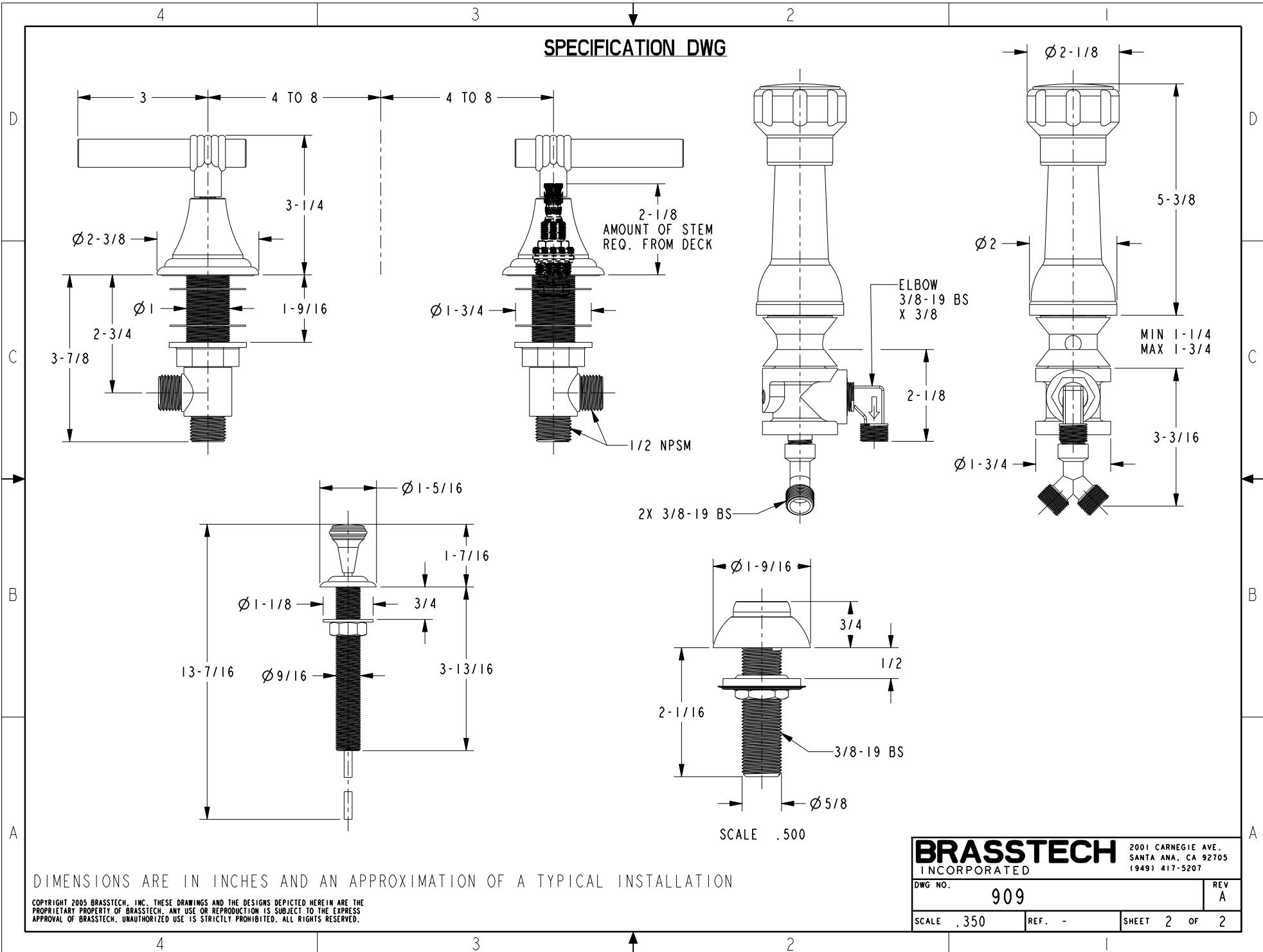
COPYRIGHT 2005 BRASSTECH, INC. THESE DRAWINGS AND THE DESIGNS DEPICTED HEREIN ARE THE PROPRIETARY PROPERTY OF BRASSTECH. ANY USE OR REPRODUCTION IS SUBJECT TO THE EXPRESS APPROVAL OF BRASSTECH. UNAUTHORIZED USE IS STRICTLY PROHIBITED. ALL RIGHTS RESERVED.

**BRASSTECH**  
INCORPORATED  
2001 E. CARNEGIE AVE.  
SANTA ANA, CA 92705  
(949) 417-5207

BIDET SET

ASSY. NO.	909		A	EN-2334	12/20/12
SCALE .200	REF. -	SHEET 1 OF 2	-	RELEASED	3/97
			REV	REV DESC	DATE

**SPECIFICATION DWG**



DIMENSIONS ARE IN INCHES AND AN APPROXIMATION OF A TYPICAL INSTALLATION

COPYRIGHT 2005 BRASSTECH, INC. THESE DRAWINGS AND THE DESIGNS DEPICTED HEREIN ARE THE PROPRIETARY PROPERTY OF BRASSTECH. ANY USE OR REPRODUCTION IS SUBJECT TO THE EXPRESS APPROVAL OF BRASSTECH. UNAUTHORIZED USE IS STRICTLY PROHIBITED. ALL RIGHTS RESERVED.

**BRASSTECH** 2001 CARNEGIE AVE.  
INCORPORATED SANTA ANA, CA 92705  
(949) 417-5207

DWG NO.	909	REV	A
SCALE	.350	REF.	-
SHEET		2	OF 2