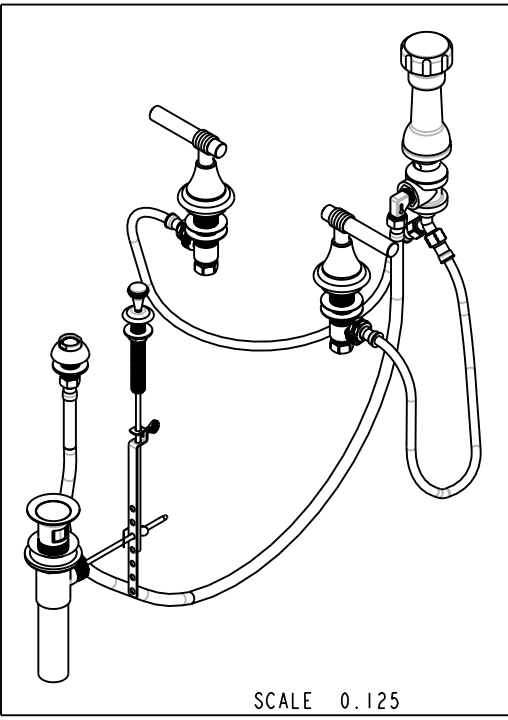


BILL OF MATERIAL (CURRENT LEVEL)

| ITEM | PT/ASSY | DESCRIPTION | TYPE | QTY. |
|------|---------|---------------------------|----------|------|
| 1 | 2-235 | BIDET DIVERTER / V. BRE | ASSEMBLY | 1 |
| 2 | 2-159 | POP-UP ROD GUIDE ASSEMBLY | ASSEMBLY | 1 |
| 3 | 10288 | 3/16" POP UP ROD | PART | 1 |
| 4 | 2-236 | DOUCHE SPRAY ASSEMBLY | ASSEMBLY | 1 |
| 5 | 325 | POP UP ASSEMBLY | ASSEMBLY | 1 |
| 6 | 10021 | POP-UP KNOB | PART | 1 |
| 7 | 10048 | ESCUTCHEON W/S VALVE | PART | 2 |
| 8 | 10095 | ESCUTCHEON, 900 SERIES | PART | 2 |
| 9 | 2-103C | LEVER HANDLE - COLD | ASSEMBLY | 1 |
| 10 | 2-103H | LEVER HANDLE - HOT | ASSEMBLY | 1 |
| 11 | 1-542 | VALVE KIT - BIDET | ASSEMBLY | 1 |



COPYRIGHT 2005 BRASSTECH, INC. THESE DRAWINGS AND THE DESIGNS DEPICTED HEREIN ARE THE PROPRIETARY PROPERTY OF BRASSTECH. ANY USE OR REPRODUCTION IS SUBJECT TO THE EXPRESS APPROVAL OF BRASSTECH. UNAUTHORIZED USE IS STRICTLY PROHIBITED. ALL RIGHTS RESERVED.

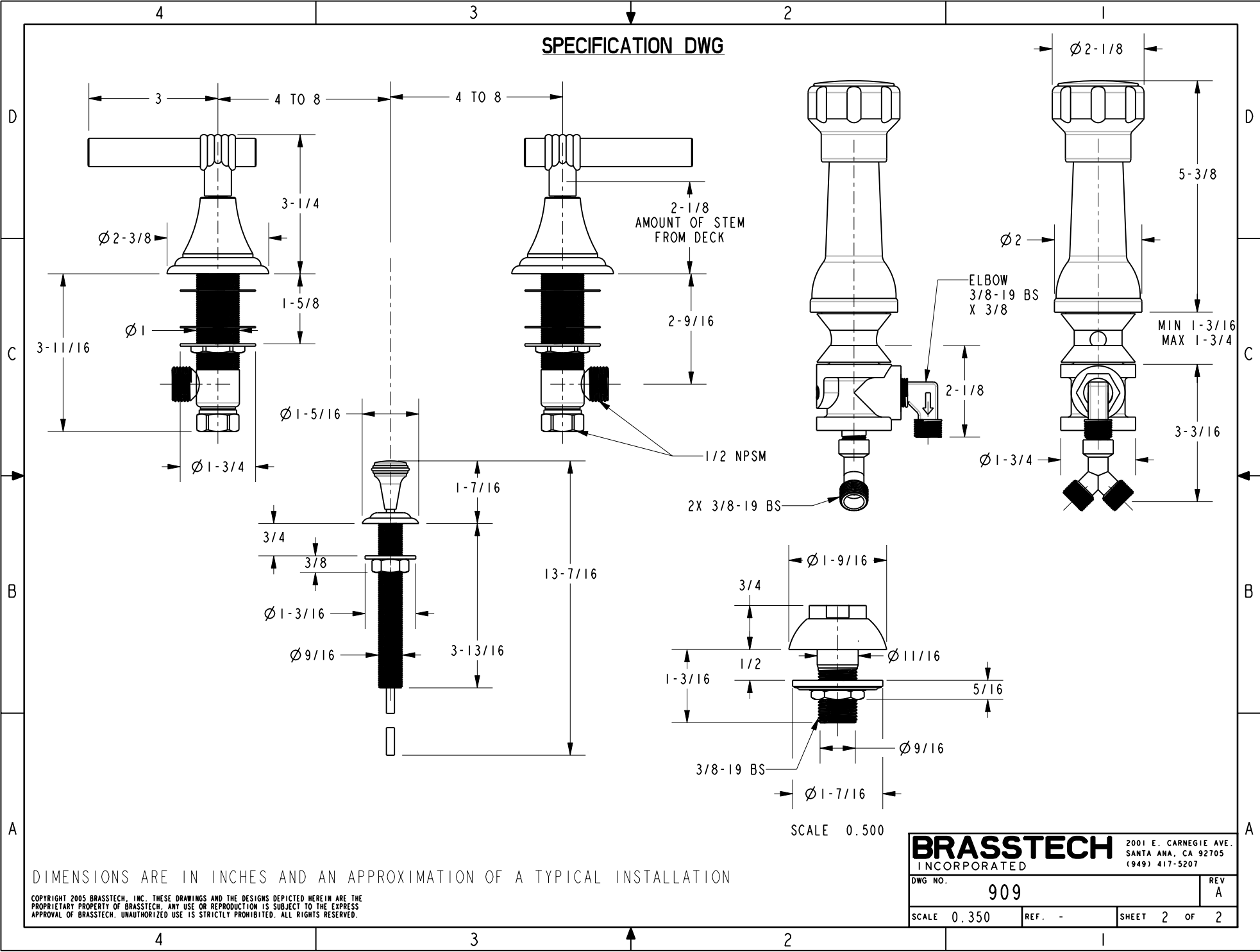
BRASSTECH
INCORPORATED

2001 E. CARNEGIE AVE.
SANTA ANA, CA 92705
(949) 417-5207

BIDET SET

| | | | |
|-------------|--------|--------------|---------------|
| ASSY. NO. | 909 | | |
| SCALE 0.200 | REF. - | SHEET 1 OF 2 | REV |
| | | | NEW DVTR 6/00 |
| | | | RELEASED 3/97 |
| | | | REV DESC DATE |

SPECIFICATION DWG



DIMENSIONS ARE IN INCHES AND AN APPROXIMATION OF A TYPICAL INSTALLATION

COPYRIGHT 2005 BRASSTECH, INC. THESE DRAWINGS AND THE DESIGNS DEPICTED HEREIN ARE THE PROPRIETARY PROPERTY OF BRASSTECH. ANY USE OR REPRODUCTION IS SUBJECT TO THE EXPRESS APPROVAL OF BRASSTECH. UNAUTHORIZED USE IS STRICTLY PROHIBITED. ALL RIGHTS RESERVED.

| | | | |
|------------------|-------|--|------|
| BRASSTECH | | 2001 E. CARNEGIE AVE. SANTA ANA, CA 92705 (949) 417-5207 | |
| DWG NO. | 909 | REV | A |
| SCALE | 0.350 | REF. | - |
| SHEET | | 2 | OF 2 |