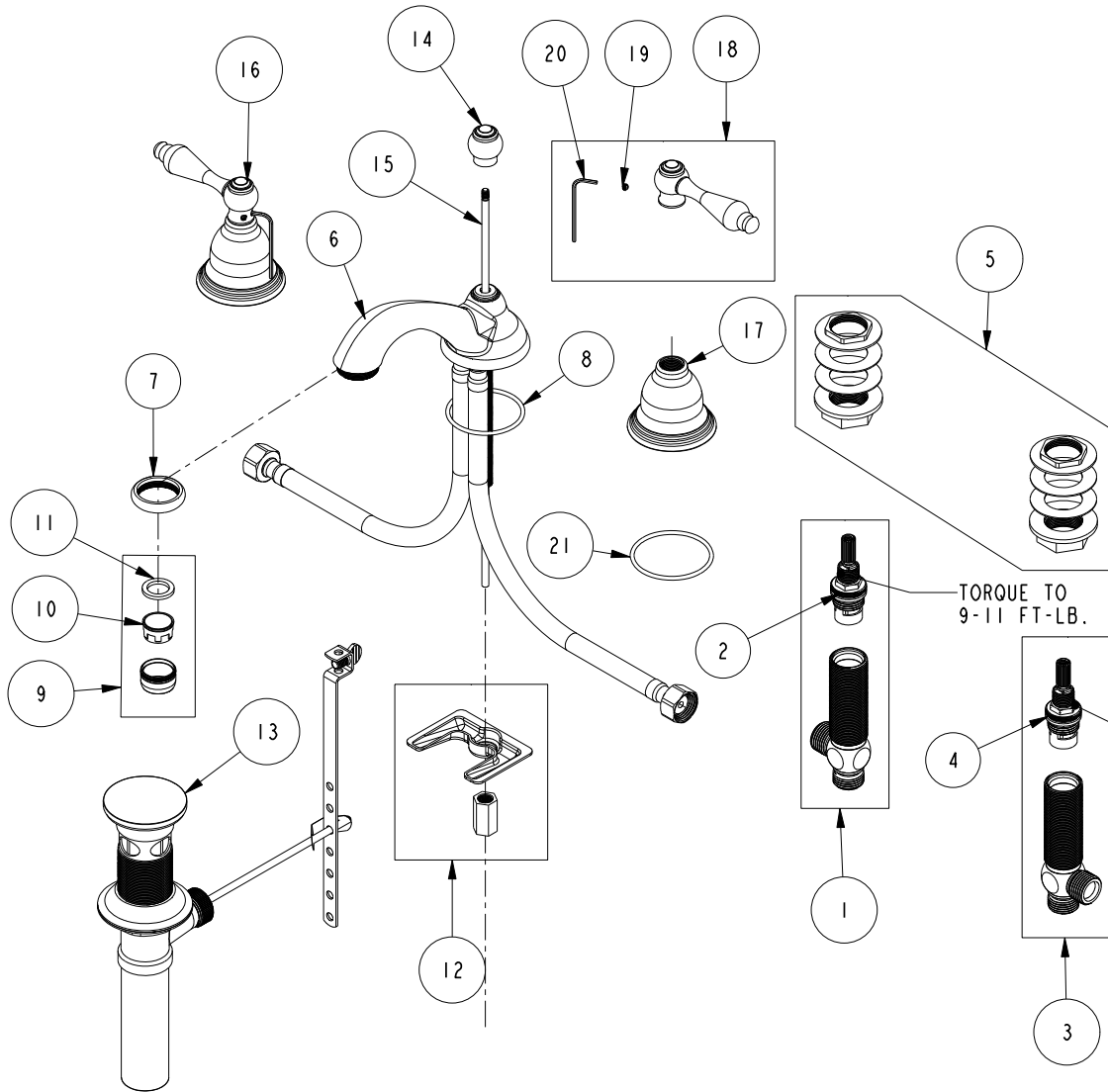


REPLACEMENT PARTS



ITEM	PT/ASSY	SPECIFY FINISH	DESCRIPTION
1	1-527		W/S CART/BODY ASM (HOT)
2	1-002		W/S CARTRIDGE - HOT
3	1-526		W/S CART/BODY ASM (COLD)
4	1-001		W/S CARTRIDGE - COLD
5	1-027		WIDE SPREAD MOUNTING HARDWARE
6	3-344	YES	WIDESPREAD SPOUT
7	10297	YES	RING TIP W/S SPOUT - SMO
8	91756		O-RING #2-134, EP, 50 DURO - GREY
9	2-627	YES	AERATOR ASM
10	12404		AERATOR INSERT, STD SIZE, 1.2 GPM
11	91014		WSHR, .59 ID X .84 OD X .095 THK, FLT, RUBBER NSF 61
12	1-514		SPOUT MOUNTING KIT ASM
13	325	YES	POP UP ASSEMBLY
14	10010	YES	POP-UP KNOB
15	10288	YES	3/16" POP UP ROD
16	3-202	YES	TRIM KIT - STOP VALVE
17	10016	YES	ESCUTCHEON BELL
18	2-116	YES	LEVER HANDLE (BRASS)
19	92000		SCREW 8 - 32 X 1/8 SS
20	10192		HEX KEY TOOL, #8 5/64
21	91753		O-RING, # 2-136, EP, 50 DURO - GREY

**WIDESPREAD FAUCET
850**

REV H EN-4728 11/06/23 APPROVED RS

NEWPORT BRASS.

t: 949.417.5207 | www.newportbrass.com