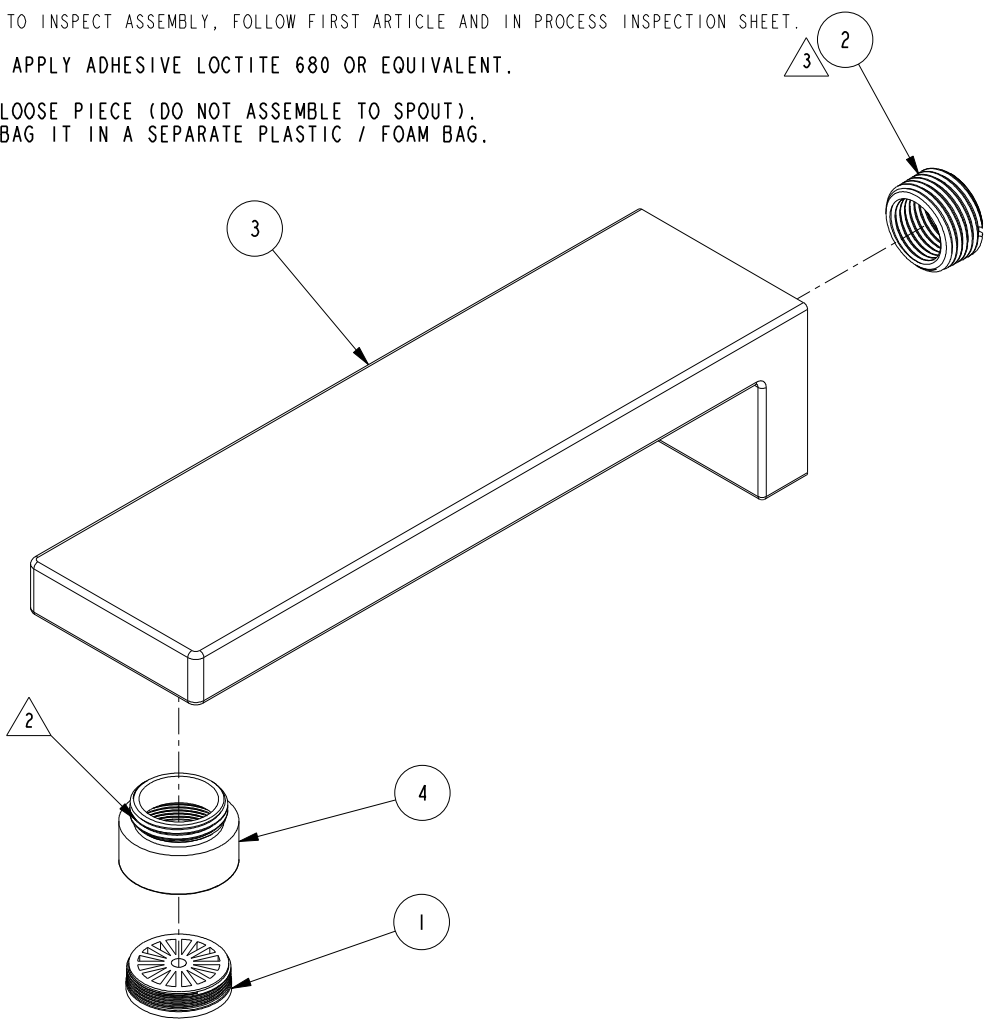


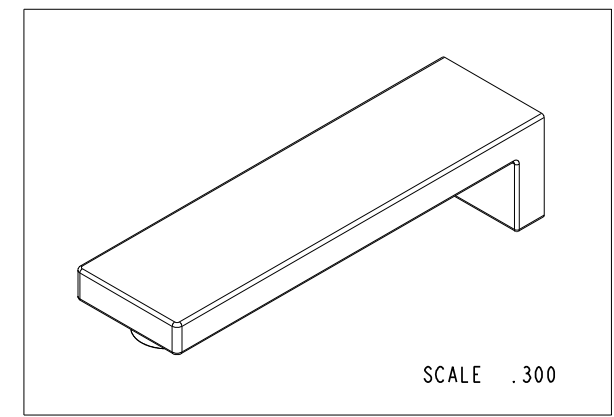
NOTES:

- (N1) 1. TO INSPECT ASSEMBLY, FOLLOW FIRST ARTICLE AND IN PROCESS INSPECTION SHEET.
- 2. APPLY ADHESIVE LOCTITE 680 OR EQUIVALENT.
- (N3) 3. LOOSE PIECE (DO NOT ASSEMBLE TO SPOUT). BAG IT IN A SEPARATE PLASTIC / FOAM BAG.



BILL OF MATERIAL (CURRENT LEVEL)

ITEM	PT/ASSY	DESCRIPTION	TYPE	QTY.
1	10224	STREAM STRAIGHTENER R/T WHITE	PART	1
2	50464	FACE BUSHING 3/4 X 1/2 NPT	PART	1
3	80028	WALL TUB SPOUT	PART	1
4	80036	FLOW STRAIGHTENER SHELL	PART	1



TESTING	-	-	-
ASSEMBLY	-	-	-
PLATING	-	3-2562BP	3-2562BP
POLISHING	-	NEXT ASSY	USED ON
MACHINING	-	APPLICATION	
TOOLING FIXTURE #	REMOVE ALL BURRS AND SHARP EDGES		

UNITS ARE: INCHES [MM]
 TOLERANCES ARE:
 FRACTIONS DECIMALS ANGLES
 ±1/16" .X ±.1 [2.5] ±1°
 .XX ±.06 [1.5]
 (X.XXX) DENOTES CRITICAL DIMS.
 ALL THREADS ARE CRITICAL

DRAWN AMARISH 12/15/16
 CHECKED RAVINDRA 12/15/16
 APPROVED J.A 12/15/16

BRASSTECH 2001 CARNEGIE AVE.
 INCORPORATED SANTA ANA, CA 92705
 (949) 417-5207

WALL TUB SPOUT ASM

DWG NO. **8-030** REV B

SCALE .500 REF. - SHEET 1 OF 2

ZONE	REV	DESCRIPTION	DATE	APPROVED
-	B	EN-4300ii	01/25/21	R.S.
-	A	EN-3223	12/15/16	J.A
-	-	EO-0368	01/20/05	-

COPYRIGHT 2005 BRASSTECH, INC.
 THESE DRAWINGS AND THE DESIGNS
 DEPICTED HEREIN ARE THE PROPRIETARY
 PROPERTY OF BRASSTECH. ANY USE
 OR REPRODUCTION IS SUBJECT TO
 THE EXPRESS APPROVAL OF BRASSTECH.
 UNAUTHORIZED USE IS STRICTLY
 PROHIBITED. ALL RIGHTS RESERVED.

