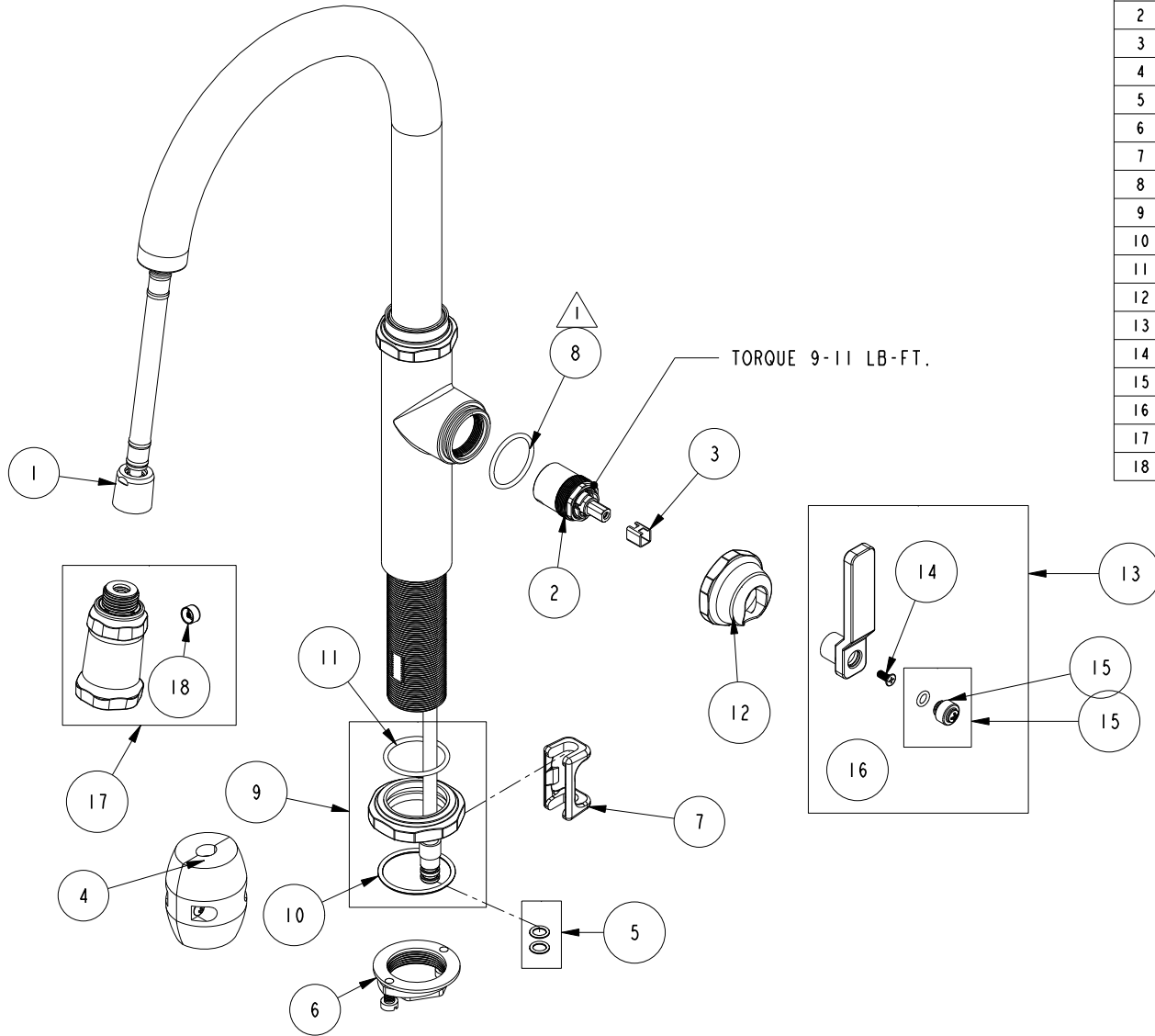


# REPLACEMENT PARTS

NOTE:

1. USE SILICON GREASE (PART NUMBER 6727) TO LUBRICATE O-RINGS BEFORE INSTALL.



ITEM	PT/ASSY	SPECIFY FINISH	DESCRIPTION
1	11877A		HOSE, PULLDOWN, GREY
2	1-371		CARTRIDGE
3	91534		CARTRIDGE STEM INSERT
4	1-286		WEIGHT ASM
5	1-399		O-RING KIT FOR SPOUT PEX CONECTION
6	1-256		MOUNTING KIT
7	91568		RETAINER CLIP
8	91505		O-RING, #2-123, EPDM, 65-75 DURO
9	20-841	YES	ESCUTCHEON ASM
10	91763		O-RING, #2- 129, EP, 50 DURO - GREY
11	91227		O-RING, #2-125 EPDM
12	14061	YES	HANDLE HUB
13	30-117	YES	LEVER HANDLE ASM
14	92035		SCRW, M4 X .7 X 10 PHL FLT HD SS
15	20-840	YES	DECO NUT ASM
16	91049		O-RING, #2- 010, EPDM, 65-75 DURO, NSF 61
17	3-588	YES	SPRAY HEAD, TAFT
18	13975	YES	BUTTON

PULL-DOWN KITCHEN FAUCET  
3190-5146

REV B EN-4954-2 05/27/25

NEWPORT BRASS

t: 949.417.5207 | www.newportbrass.com