

NOTES:

1. TO INSPECT ASSEMBLY, FOLLOW FIRST ARTICLE AND IN PROCESS INSPECTION SHEET.

2. APPLY LOCTITE 680.

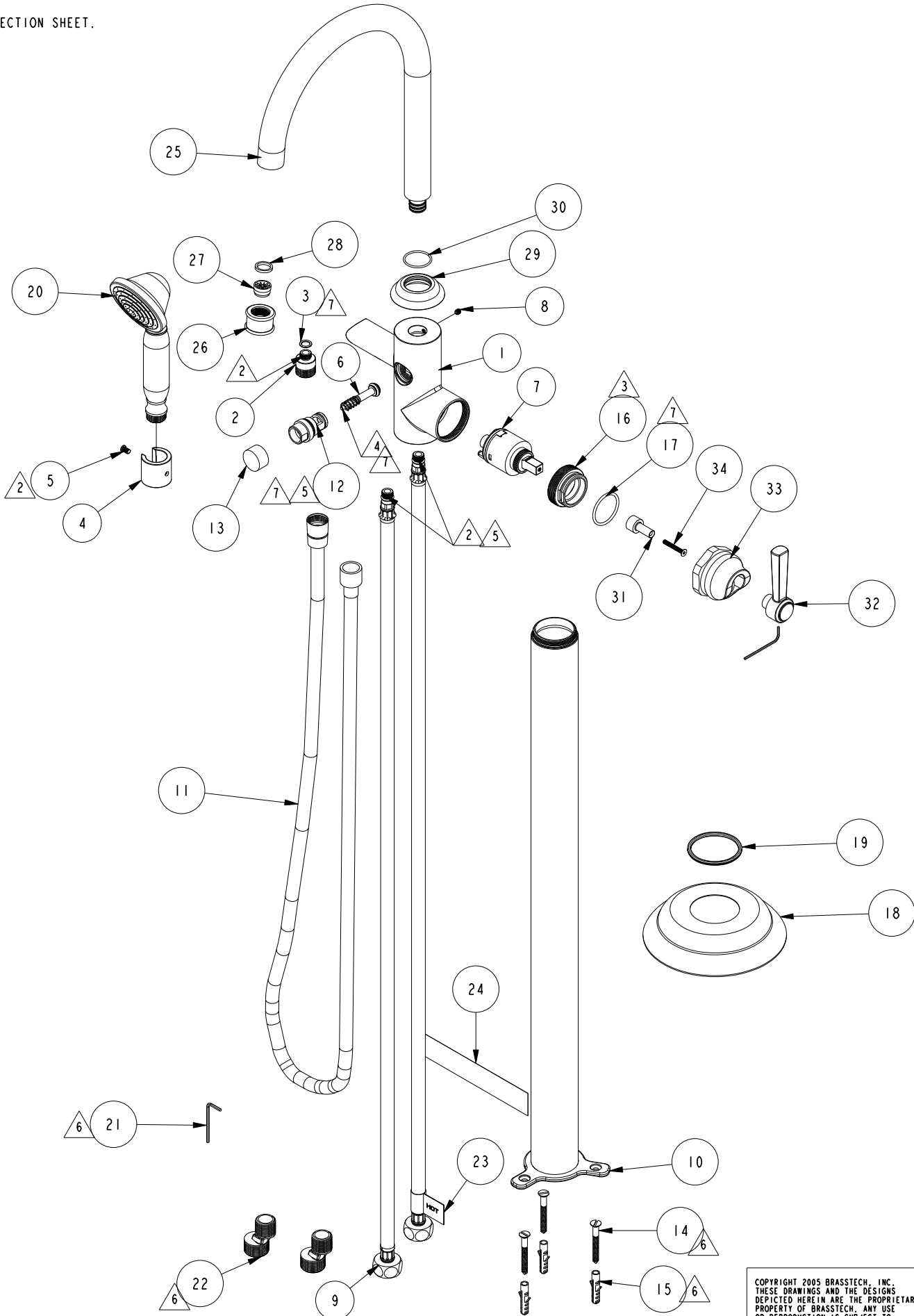
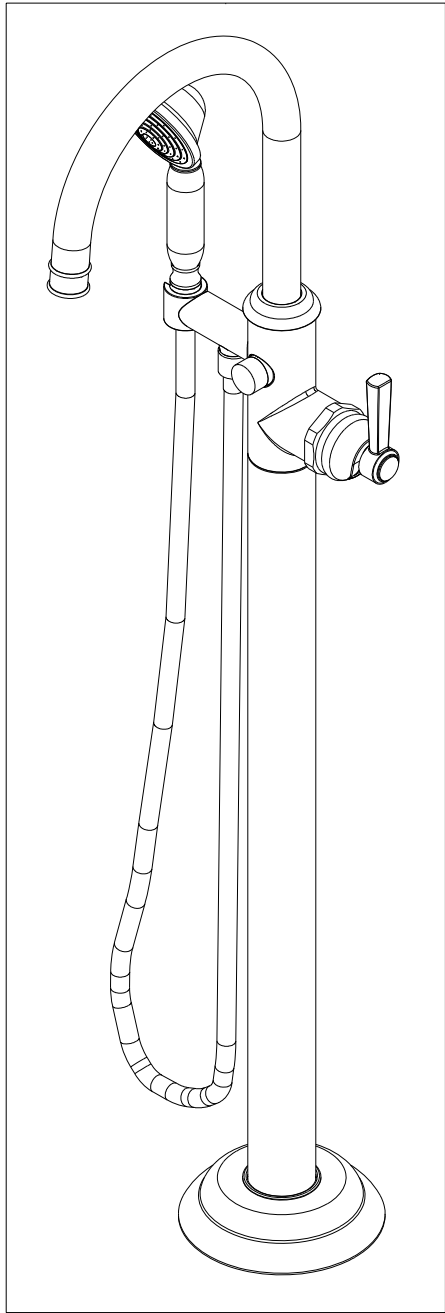
3. TORQUE TO 7-9 LB-FT.

4. APPLY LOCTITE 242 IF SCREW DOES NOT HAVE A NYLON PATCH.

5. TORQUE TO 18-20 LB-IN.

6. PLACE THESE ITEMS IN SEPERATE PLASTIC BAGS.

7. APPLY THIN COAT OF SILICONE GREASE.



BILL OF MATERIAL (CURRENT LEVEL)

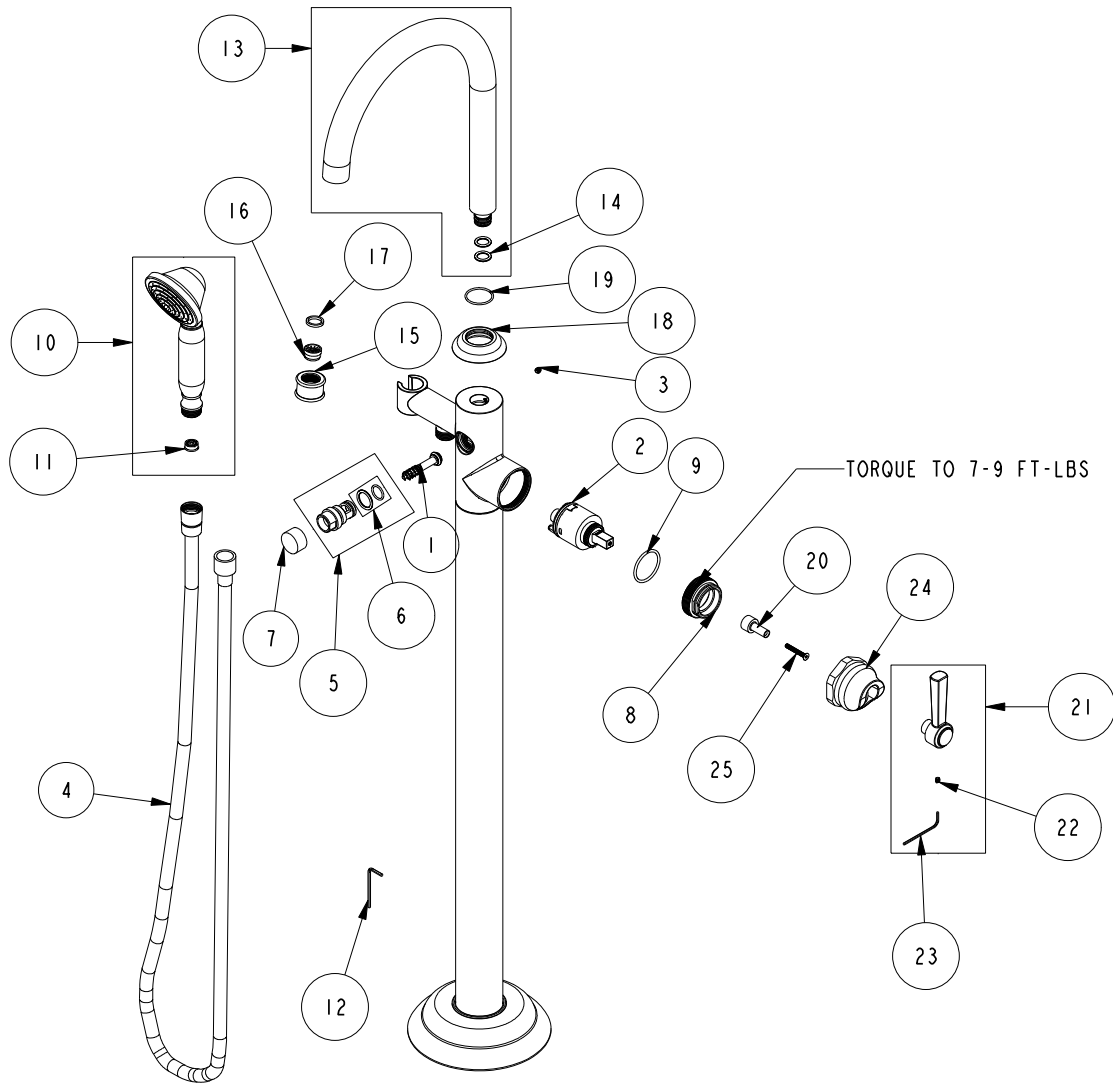
ITEM	PT/ASSY	DESCRIPTION	TYPE	QTY.
1	12187	BODY	PART	1
2	12189	ADAPTER	PART	1
3	91017	O-RING #2-012	PART	1
4	12175	HAND SHWR HOLDER	PART	1
5	92821	SCREW	PART	1
6	20-259	DIVERTER ASM	ASSEMBLY	1
7	1-292	CARTRIDGE	ASSEMBLY	1
8	92308	SCRW, M5 X 5 SKT HD CUP PT SS	PART	1
9	12184	WATER SUPPLY HOSE	ASSEMBLY	2
10	20-310	BODY ASM	ASSEMBLY	1
11	284_	SHOWER HOSE	PART	1
12	20-260	DIVERTER HOUSING ASM	ASSEMBLY	1
13	12191	DIVERTER BUTTON	PART	1
14	92070	SCRW, #14 X 2 SLT FLT HD SS	PART	3
15	91368	WALL ANCHOR PLASTIC, 12-1/4	PART	3
16	13220	CARTRIDGE RETAINER	PART	1
17	91227	O-RING, #2-125 EPDM	PART	1
18	13222	BASE RING	PART	1
19	91630	GROMMET	PART	1
20	283-201	HANDSHOWER ASM	ASSEMBLY	1
21	10159	HEX KEY, 3/32 ALLOY STEEL	PART	1
22	12257	1/2 X 3/4 NPSM THD ADAPTER	PART	2
23	98044	LABEL - HOT	PART	1
24	98155	WARNING LABEL	PART	1
25	30-109	SPOUT SUB ASM	ASSEMBLY	1
26	13990	FLOW STRAIGHTENER SHELL	PART	1
27	91330	STREAM STRAIGHTENER JUNIOR	PART	1
28	91500	GSKT, .578 ID X .728 OD X .102 THK EPDM	PART	1
29	13987	DECORATIVE COLLAR	PART	1
30	91408	O-RING, #2-023, EPDM, 65-75 DURO	PART	1
31	13984	ADAPTER	PART	1
32	20-729	HANDLE LEVER ASM.	ASSEMBLY	1
33	13989	HANDLE BONNET	PART	1
34	92487	SCRW, M4 X 30 SKT FLT HD CAP SS STL	PART	1

B	EN-4823-1	06/27/24	K.N.
A	EN-4823	06/10/24	K.N.
REV	DESCRIPTION	DATE	APPROVED

COPYRIGHT 2005 BRASSTECH, INC.  
THESE DRAWINGS AND THE DESIGNS  
DEPICTED HEREIN ARE THE PROPRIETARY  
PROPERTY OF BRASSTECH. ANY USE  
OR REPRODUCTION IS SUBJECT TO  
THE EXPRESS APPROVAL OF BRASSTECH.  
UNAUTHORIZED USE IS STRICTLY  
PROHIBITED. ALL RIGHTS RESERVED.

-	-	UNITS ARE: INCHES [MM] TOLERANCES ARE: FRACTIONS DECIMALS ANGLES ±1/16" .X ±.1 [2.5] .XX ±.06 [1.5]	<b>BRASSTECH</b> 2001 CARNEGIE AVE SANTA ANA, CA 92705 (949) 417-5207 INCORPORATED	
-	-	X.XXX DENOTES CRITICAL DIMS. ALL THREADS ARE CRITICAL		
NEXT ASSY	USED ON	DRAWN K.N. 06/14/24	DWG NO. 910-4261	
APPLICATION		CHECKED J.W. 06/14/24	REV B	
REMOVE ALL BURRS AND SHARP EDGES		APPROVED J.W. 06/14/24	SCALE 0.180	SHEET 1 OF 4

# REPLACEMENT PARTS



ITEM	PT/ASSY	SPECIFY FINISH	DESCRIPTION
1	20-259		DIVERTER ASM
2	1-292		CARTRIDGE
3	92308		SCRW, M5 X 5 SKT HD CUP PT SS
4	284_		SHOWER HOSE
5	20-260	YES	DIVERTER HOUSING ASM
6	10-340		DIVERTER ASM O-RING KIT
7	12191	YES	DIVERTER BUTTON
8	13220		CARTRIDGE RETAINER
9	91227		O-RING, #2-125 EPDM
10	283-201	YES	HANDSHOWER ASM
11	12832		FLOW REGULATOR, 1.8 GPM MAX
12	10159		HEX KEY, 3/32 ALLOY STEEL
13	30-109	YES	SPOUT SUB ASM
14	91027		O-RING, #2- 112, EPDM, 65-75 DURO, NSF 61
15	13990	YES	FLOW STRAIGHTENER SHELL
16	91330		STREAM STRAIGHTENER JUNIOR
17	91500		GSKT, .578 ID X .728 OD X .102 THK EPDM
18	13987	YES	DECORATIVE COLLAR
19	91408		O-RING, #2-023, EPDM, 65-75 DURO
20	13984		ADAPTER
21	20-729	YES	HANDLE LEVER ASM.
22	92001		SCRW, 8-32 X 3/16 SKT HD FLT PT SS
23	10192		HEX KEY TOOL, #8 5/64
24	13989	YES	HANDLE BONNET
25	92487		SCRW, M4 X 30 SKT FLT HD CAP SS STL

Tub and Handshower Set  
910-4261

REV B EN-4823-1 06/27/24

**NEWPORT BRASS.**

t: 949.417.5207 | [www.newportbrass.com](http://www.newportbrass.com)

Features

Brass Construction  
Euro-motion ceramic disc 40 mm valve cartridge  
12.0 gallons (45 liters) per minute spout maximum flow rate  
3/4" braided hot and cold supply lines (with 1/2" adapters)  
37.22" (94.5 cm) tub spout height at outlet  
8.73" (22.2 cm) tub spout reach (center-center)  
Traditional handshower design of brass construction  
For single hole configurations  
ADA Compliant (Handles Only)  
1.8 GPM (6.8 LPM) Max, Handshower Only

Tub and Handshower Set

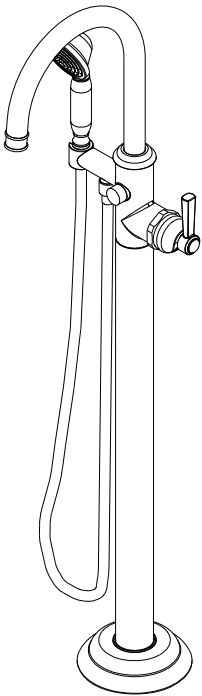
910-4261



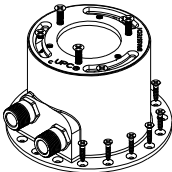
Codes / Standards Compliance

Meets or exceeds the following at date of manufacture:

ASME A112.18.1/CSA B125.1  
IAPMO/cUPC  
IPC  
ADA & ICC/ANSI A117.1 (Handle Only)  
Energy Policy Act of 1992  
EPA WaterSense  
California Energy Commission  
ASME A112.18.3 (Back Flow)  
All applicable US Federal and State material regulations



ACCESSORY OPTIONAL

System Element	Rough valve
Description	Freestanding Tub Fill Rough Kit (Floor Mount)
Inlet/Outlet Size	3/4" NPT and 1/2" direct sweat connections inlets / 3/4" NPT and 1/2" NPT outlets
Part Number	1-339
Image	

### PRODUCT DIMENSIONS *(Units are in inches)*

Technical drawing of the Firearm Model 1000, showing dimensions in inches and millimeters. The drawing includes a side view of the pump-action mechanism and a top view of the barrel assembly.

Dimensions shown:

- Overall height: 38.43 [976, 21]
- Height to the top of the pump handle: 30.39 [772]
- Height to the top of the barrel: 28.58 [726]
- Barrel diameter:  $\varnothing 2.88$  [73]
- Pump handle diameter:  $\varnothing 1.08$  [27, 4]
- Top view width: 9.77 [248, 1]
- Hose length: 59" HOSE

