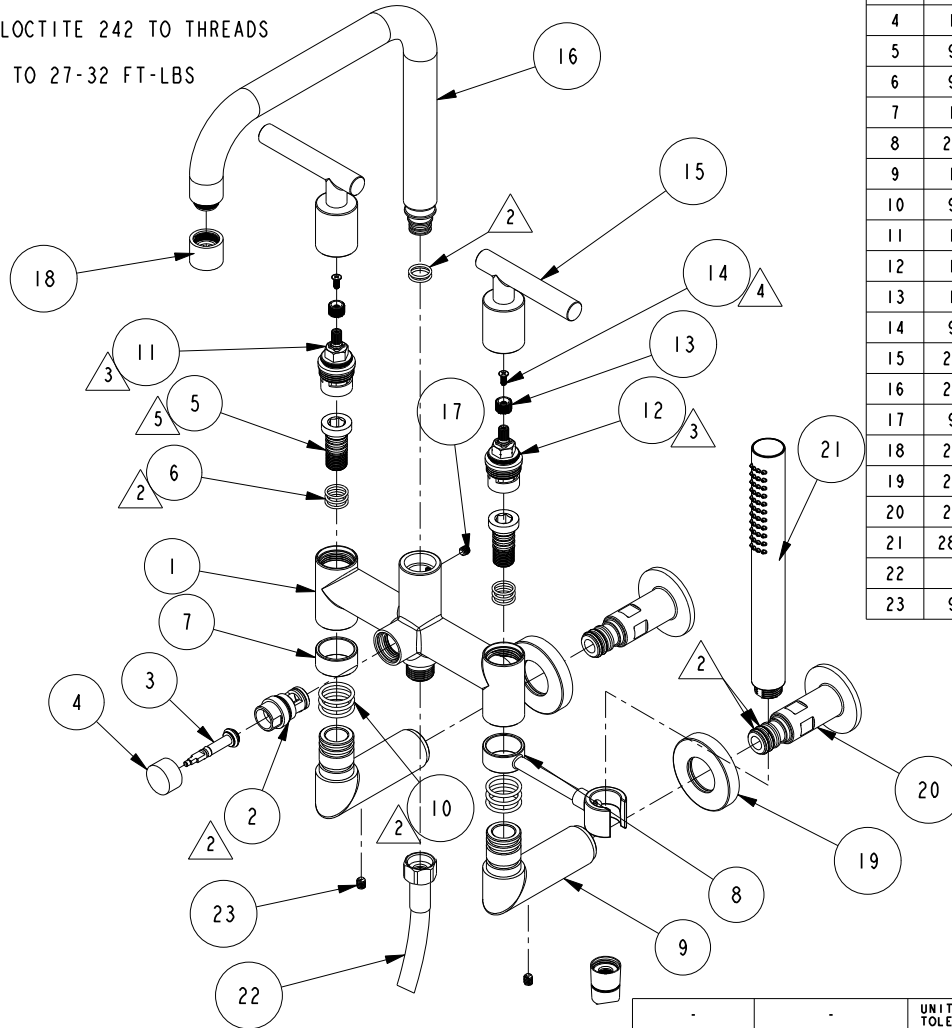


NOTES:

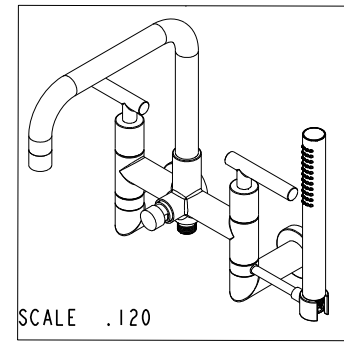
1. TO INSPECT ASSEMBLY, FOLLOW FIRST ARTICLE AND IN PROCESS INSPECTION SHEET.

- 2 APPLY THIN COAT OF SILICONE GREASE TO O-RINGS
- 3 TORQUE TO 15-20 FT-LBS
- 4 APPLY LOCTITE 242 TO THREADS
- 5 TORQUE TO 27-32 FT-LBS



BILL OF MATERIAL (CURRENT LEVEL)

| ITEM | PT/ASSY | DESCRIPTION | TYPE | QTY. |
|------|---------|--|----------|------|
| 1 | 13595 | BRIDGE FAUCET BODY | PART | 1 |
| 2 | 20-260 | DIVERTER ASM | ASSEMBLY | 1 |
| 3 | 20-259 | DIVERTER ASM | ASSEMBLY | 1 |
| 4 | 12191 | DIVERTER BUTTON | PART | 1 |
| 5 | 92916 | INTERNAL SEALING SCREW | PART | 2 |
| 6 | 91079 | O-RING, #2- 015, EPDM, 65-75 DURO, NSF 61 | PART | 8 |
| 7 | 13596 | SPACER RING | PART | 1 |
| 8 | 20-589 | TUB FILLER HANDSHOWER HOLDER ASM | ASSEMBLY | 1 |
| 9 | 13754 | TUB FILLER ELBOW | PART | 2 |
| 10 | 91046 | O-RING, #2-118, EPDM, 65-75 DURO | PART | 6 |
| 11 | 1-146 | CARTRIDGE 3/4, M24 (HOT) | PART | 1 |
| 12 | 1-145 | CARTRIDGE 3/4, M24 (COLD) | PART | 1 |
| 13 | 12975 | ADAPTER | PART | 2 |
| 14 | 92035 | SCRW, M4 X .7 X 10 PHL FLT HD SS | PART | 2 |
| 15 | 20-352 | LEVER HANDLE ASM | ASSEMBLY | 2 |
| 16 | 20-586 | BRIDGE TUB FILLER SPOUT ASM | ASSEMBLY | 1 |
| 17 | 92995 | SCRW, 1/4-20 X 1/4 SKT HD CUP PT SS NYLON PATCH | PART | 1 |
| 18 | 20-601 | FLOW STRAIGHTENER | ASSEMBLY | 1 |
| 19 | 20-658 | ESCUTCHEON ASM | ASSEMBLY | 2 |
| 20 | 20-659 | WALL MOUNTING ADAPTER ASM. | ASSEMBLY | 2 |
| 21 | 283-101 | ROUND WAND HANDSHOWER | ASSEMBLY | 1 |
| 22 | 284 | 59 IN. SPIRAL SHOWER HOSE | ASSEMBLY | 1 |
| 23 | 92945 | SCRW, 1/4-20 X 5/16 SKT HD CUP PT SS NYLON PATCH | PART | 2 |



COPYRIGHT 2005 BRASSTECH, INC. THESE DRAWINGS AND THE DESIGNS DEPICTED HEREIN ARE THE PROPRIETARY PROPERTY OF BRASSTECH. ANY USE OR REPRODUCTION IS SUBJECT TO THE EXPRESS APPROVAL OF BRASSTECH. UNAUTHORIZED USE IS STRICTLY PROHIBITED. ALL RIGHTS RESERVED.

| | | | |
|-------------------|---|----------------------------------|---------|
| TESTING | - | - | - |
| ASSEMBLY | - | - | - |
| PLATING | - | - | - |
| POLISHING | - | NEXT ASSY | USED ON |
| MACHINING | - | APPLICATION | |
| TOOLING FIXTURE # | | REMOVE ALL BURRS AND SHARP EDGES | |

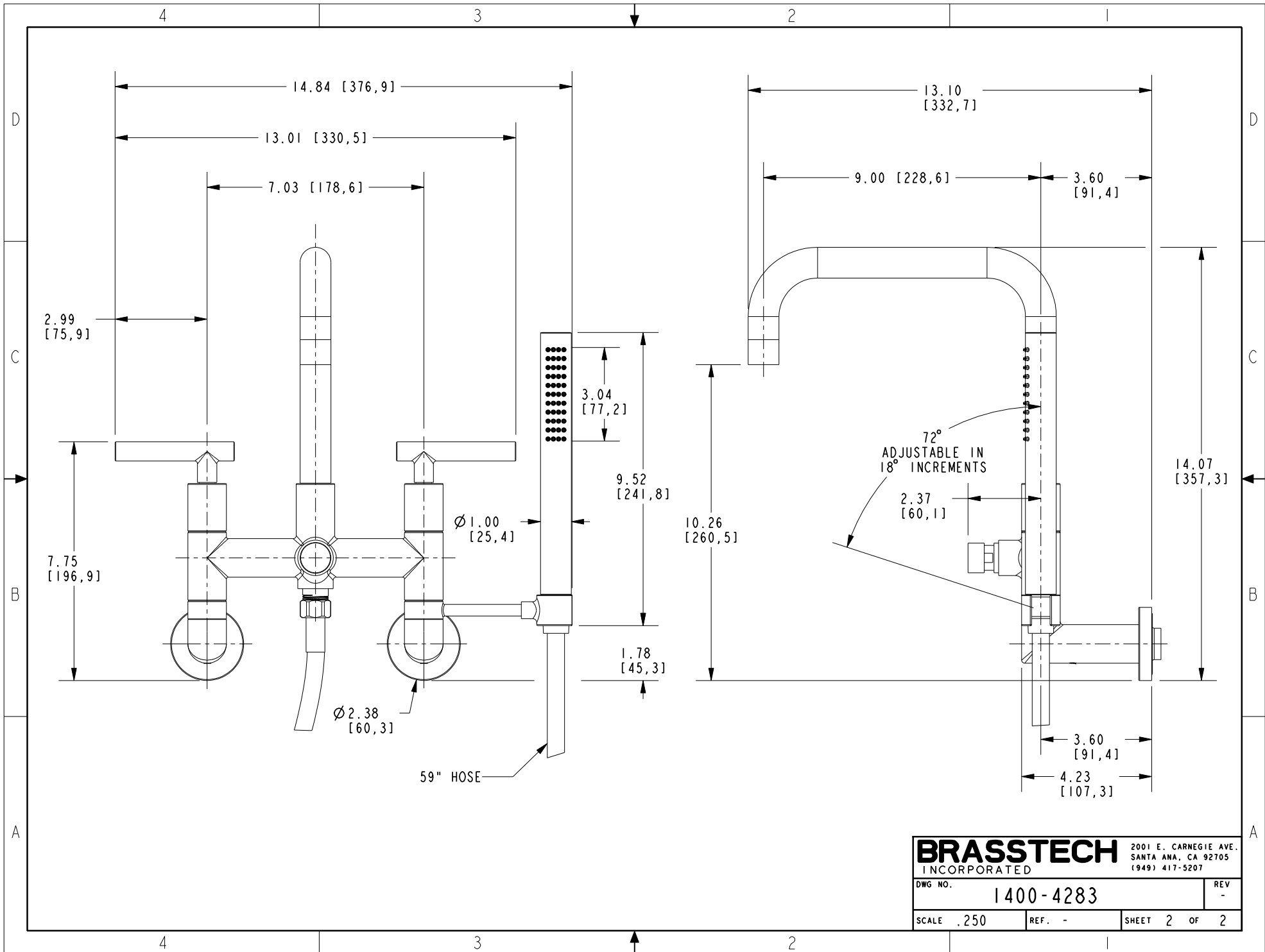
| | | |
|---|----------------|----------|
| UNITS ARE: INCHES [MM] | | |
| TOLERANCES ARE: | | |
| FRACTIONS | DECIMALS | ANGLES |
| ±1/16" | .X ±.1 [2.5] | ±1° |
| | .XX ±.06 [1.5] | |
| (X.XXX) DENOTES CRITICAL DIMS. ALL THREADS ARE CRITICAL | | |
| DRAWN | G.B. | 12/06/21 |
| CHECKED | J.M. | 12/06/21 |
| APPROVED | J.M. | 12/06/21 |

BRASSTECH 2001 CARNEGIE AVE. SANTA ANA, CA 92705 (949) 417-5207
INCORPORATED

WALL MOUNT TUB FILLER

| | | |
|---------|----------|-------------|
| EN-4432 | 12/06/21 | J.M. |
| ZONE | REV | DESCRIPTION |
| 4 | | |

| | | | |
|---------|-----------|------|---|
| DWG NO. | 1400-4283 | REV | - |
| SCALE | .175 | REF. | - |
| SHEET | 1 | OF | 2 |



| | | | |
|------------------|-----------|--|--------|
| BRASSTECH | | 2001 E. CARNEGIE AVE. SANTA ANA, CA 92705 (949) 417-5207 | |
| INCORPORATED | | | |
| DWG NO. | 1400-4283 | | REV |
| SCALE | .250 | REF. | - |
| | | SHEET | 2 OF 2 |