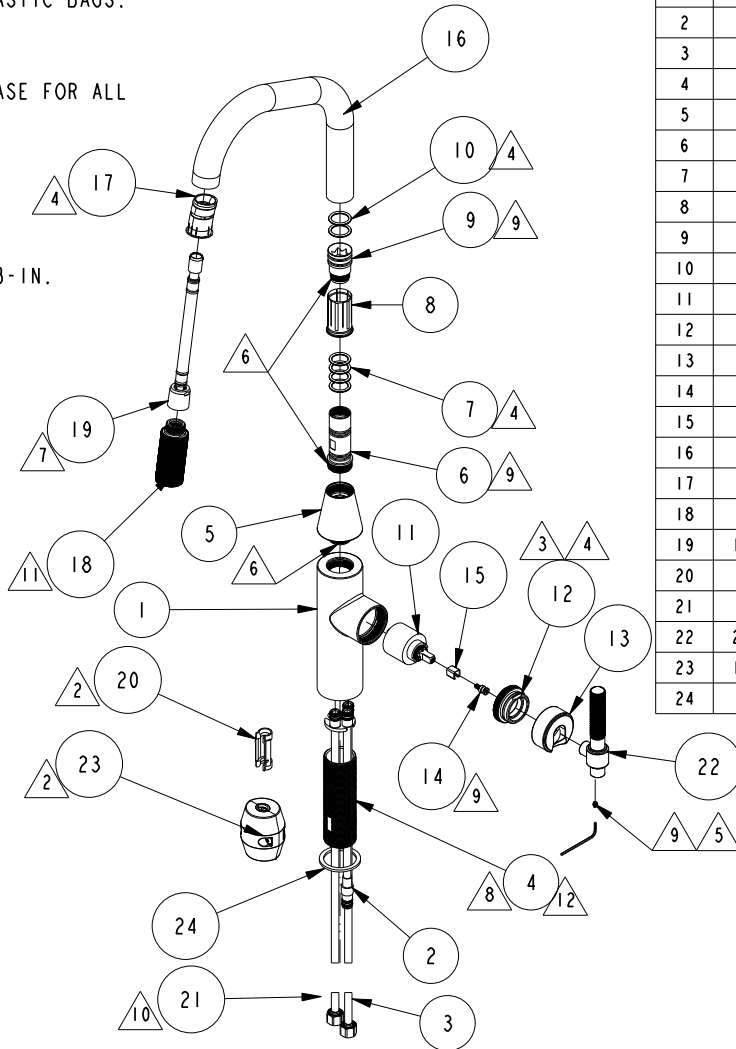


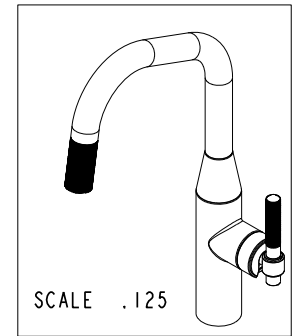
NOTES:

1. TO INSPECT ASSEMBLY, FOLLOW FIRST ARTICLE AND IN PROCESS INSPECTION SHEET.
2. PUT THESE ITEMS IN SEPARATE PLASTIC BAGS.
3. TORQUE TO 8 +/-0.5 LB-FT.
4. APPLY THIN COAT OF SILICON GREASE FOR ALL O-RINGS BEFORE INSTALLATION.
5. APPLY LOCTITE 242, IF SCREW DOES NOT HAVE NYLON PATCH.
6. APPLY LOCTITE 680.
7. TORQUE SWIVEL NUT TO 19 +/-2 LB-IN.
8. TORQUE TO 10 +/-2 LB-FT.
9. TORQUE TO 7 +/- 2 LB-IN.
10. PARTIALLY THREAD MOUNTING KIT ONTO SHANK
11. DO NOT DOCK SPRAY HEAD TO SPOUT WHEN PACKAGING.
12. APPLY LOCTITE 242.



BILL OF MATERIAL (CURRENT LEVEL)

ITEM	PT/ASSY	DESCRIPTION	TYPE	QTY.
1	13434	BODY, TAFT PULL-DOWN	PART	1
2	1-458	OUTLET HOSE	ASSEMBLY	1
3	1-457	INTEGRATED SUPPLY HOSE	ASSEMBLY	1
4	13440	SHANK	PART	1
5	13476	TAPERED UPPER BODY	PART	1
6	12667	SPOUT ADAPTER	PART	1
7	91030	O-RING, #2- 115, EPDM, 65-75 DURO, NSF 61	PART	4
8	91712	SLEEVE	PART	1
9	13464	ADAPTER EXTENSION	PART	1
10	91114	O-RING, #2- 116, EPDM, 65-75 DURO, NSF 61	PART	2
11	1-064	SINGLE LEVER CARTRIDGE	PART	1
12	1-266	CART. RETAINER ASM	ASSEMBLY	1
13	12843	HANDLE HUB	PART	1
14	11874	HANDLE ADAPTER SCREW	PART	1
15	91534	CARTRIDGE STEM INSERT	PART	1
16	13663	PULLDOWN SPOUT	PART	1
17	91544	MAGNET DOCKING	ASSEMBLY	1
18	3-673	SPRAY HEAD	ASSEMBLY	1
19	11877A	HOSE, PULLDOWN, GREY	ASSEMBLY	1
20	91568	RETAINER CLIP	PART	1
21	1-256	MOUNTING KIT	ASSEMBLY	1
22	20-532	KNURLED HANDLE ASM	ASSEMBLY	1
23	1-286A	WEIGHT	ASSEMBLY	1
24	91139	WASHER RBR 1-3/8	PART	1



COPYRIGHT 2005 BRASSTECH, INC. THESE DRAWINGS AND THE DESIGNS DEPICTED HEREIN ARE THE PROPRIETARY PROPERTY OF BRASSTECH. ANY USE OR REPRODUCTION IS SUBJECT TO THE EXPRESS APPROVAL OF BRASSTECH. UNAUTHORIZED USE IS STRICTLY PROHIBITED. ALL RIGHTS RESERVED.

TESTING	-	-	-
ASSEMBLY	-	-	-
PLATING	-	-	-
POLISHING	-	NEXT ASSY	USED ON
MACHINING	-	APPLICATION	
TOOLING FIXTURE #	-	REMOVE ALL BURRS AND SHARP EDGES	

UNITS ARE: INCHES [MM]
 TOLERANCES ARE:
 FRACTIONS DECIMALS ANGLES
 ±1/16" .X ±.1 [2,5] ±1"
 .XX ±.06 [1,5]
 (X.XXX) DENOTES CRITICAL DIMS.
 ALL THREADS ARE CRITICAL
 DRAWN G.B. 08/30/22
 CHECKED J.M. 08/30/22
 APPROVED J.M. 08/30/22

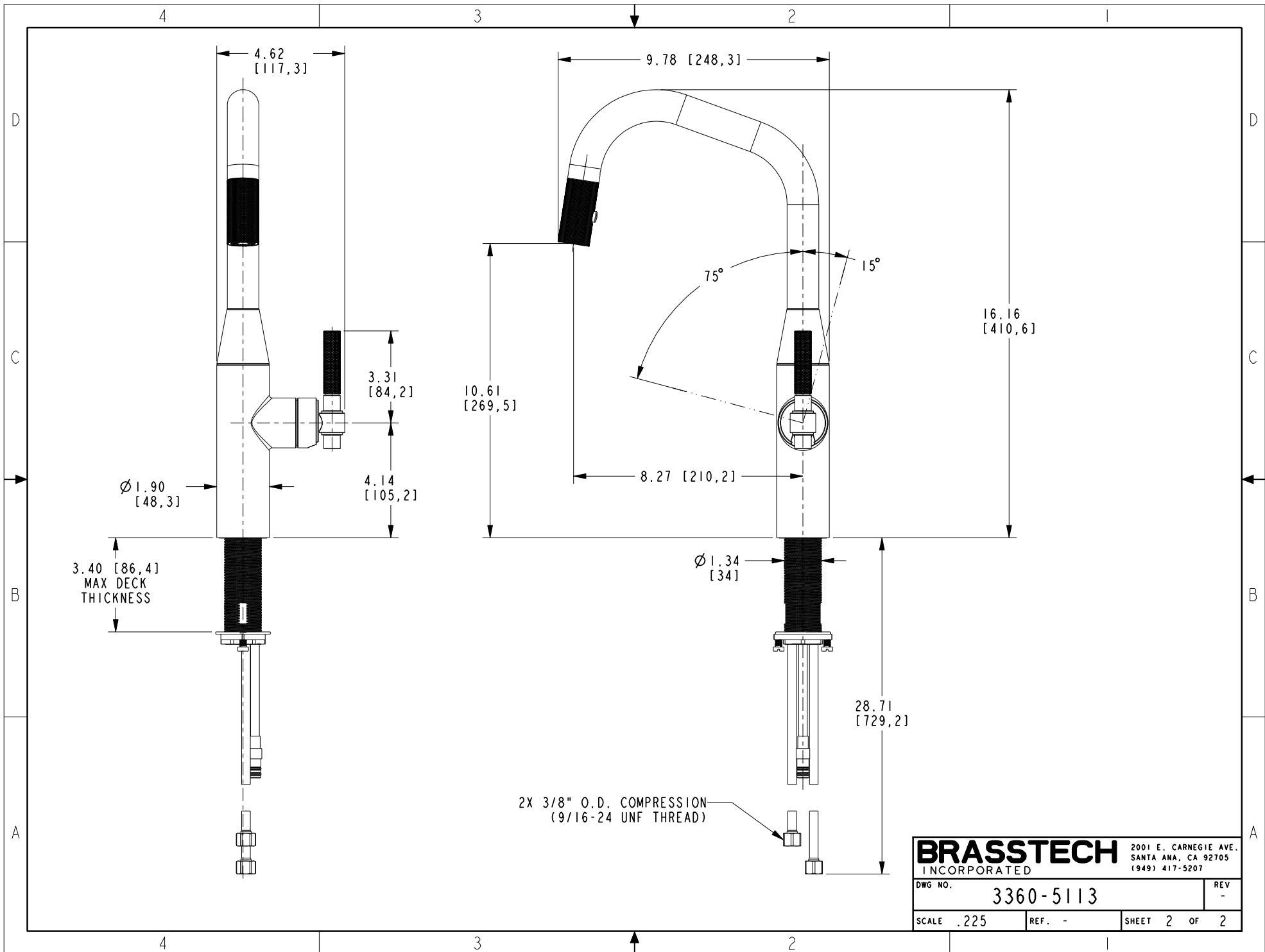
BRASSTECH 2001 CARNEGIE AVE.
 INCORPORATED SANTA ANA, CA 92705
 (949) 417-5207

KITCHEN PULLDOWN

DWG NO. 3360-5113 REV -

SCALE .125 REF. SHEET 1 OF 2

EN-4550	08/30/22	J.M.
ZONE	REV	DESCRIPTION



BRASSTECH		2001 E. CARNEGIE AVE. SANTA ANA, CA 92705 (949) 417-5207
DWG NO.	3360-5113	REV -
SCALE .225	REF. -	SHEET 2 OF 2