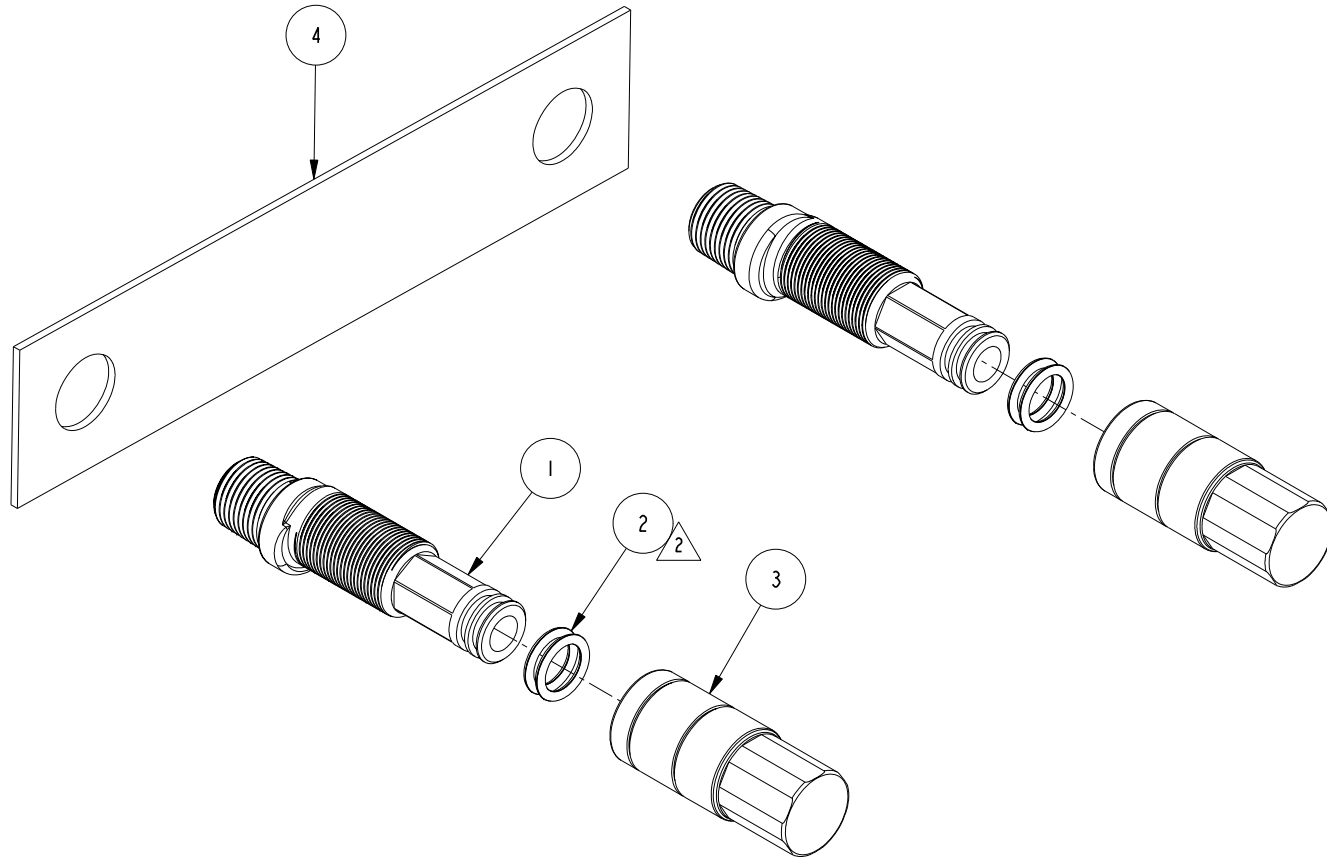


NOTES:

1. TO INSPECT ASSEMBLY, FOLLOW FIRST ARTICLE AND IN PROCESS INSPECTION SHEET.

2. APPLY LIGHT FILM OF SILICONE GREASE TO O-RINGS

| BILL OF MATERIAL (CURRENT LEVEL) | | | | |
|----------------------------------|---------|---|------|------|
| ITEM | PT/ASSY | DESCRIPTION | TYPE | QTY. |
| 1 | 92941 | ECCENTRIC NIPPLE | PART | 2 |
| 2 | 91028 | O-RING, #2- 113, EPDM, 65-75 DURO, NSF 61 | PART | 4 |
| 3 | 92942 | NIPPLE TEST PLUG | PART | 2 |
| 4 | 91807 | ROUGH INSTAL EMLATE | PART | 1 |



UNITS ARE: INCHES [MM]
 TOLERANCES ARE:
 FRACTIONS DECIMALS ANGLES
 $\pm 1/16"$.X $\pm .1$ [2.5] $\pm 1^\circ$
 .XX $\pm .06$ [1.5]
 (X.XXX) DENOTES CRITICAL DIMS.
 ALL THREADS ARE CRITICAL

BRASSTECH 2001 CARNEGIE AVE.
 INCORPORATED SANTA ANA, CA 92705
 (949) 417-5207

ECCENTRIC NIPPLE ROUGH ASM.

DRAWN G.B. 12/06/21
 CHECKED J.W. 12/06/21
 APPROVED J.W. 12/06/21

DWG NO. 1-483 REV -
 SCALE .500 REF. - SHEET | OF |

COPYRIGHT 2005 BRASSTECH, INC.
 THESE DRAWINGS AND THE DESIGNS
 DEPICTED HEREIN ARE THE PROPRIETARY
 PROPERTY OF BRASSTECH. ANY USE
 OR REPRODUCTION IS SUBJECT TO
 THE EXPRESS APPROVAL OF BRASSTECH.
 UNAUTHORIZED USE IS STRICTLY
 PROHIBITED. ALL RIGHTS RESERVED.

| | | | | |
|-------------------|---|----------------------------------|-----------|---|
| TESTING | - | - | - | - |
| ASSEMBLY | - | - | - | - |
| PLATING | - | 1500-4283 | 1500-4283 | |
| POLISHING | - | NEXT ASSY | USED ON | |
| MACHINING | - | APPLICATION | | |
| TOOLING FIXTURE # | | REMOVE ALL BURRS AND SHARP EDGES | | |

| ZONE | REV | DESCRIPTION | DATE | APPROVED |
|------|-----|-------------|----------|----------|
| - | - | EN-4432 | 12/06/21 | J.M. |