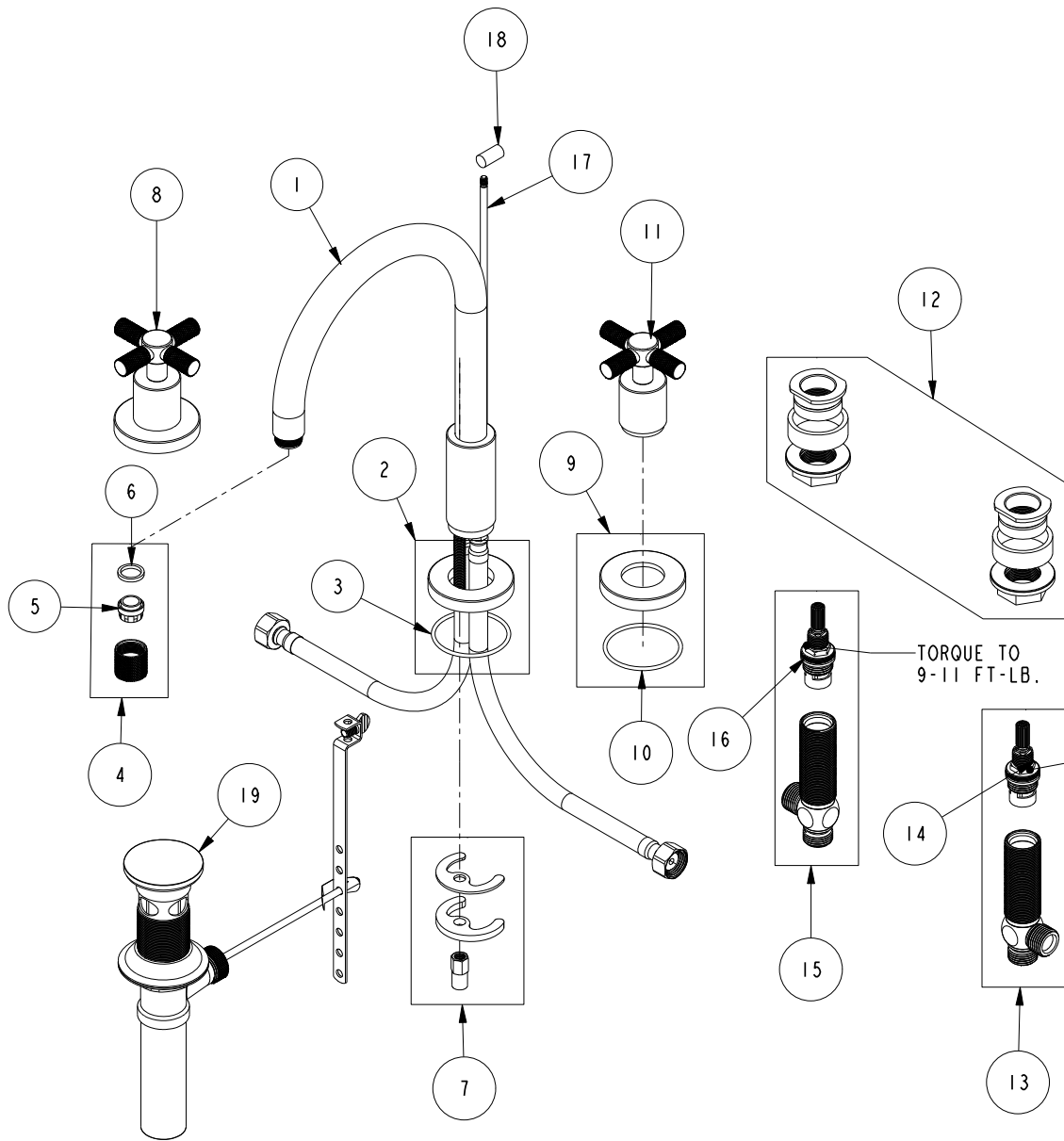


# REPLACEMENT PARTS



ITEM	PT/ASSY	SPECIFY FINISH	DESCRIPTION
1	3-691	YES	W/S SPOUT ASM
2	20-526	YES	SPOUT BASE ASM
3	91753		O-RING, # 2-136, EP, 50 DURO - GREY
4	20-521	YES	AERATOR ASM
5	12403		AERATOR INSERT, Jr. SIZE, 1.2 GPM
6	91500		GSKT, .578 ID X .728 OD X .102 THK EPDM
7	1-491		SPOUT MOUNTING KIT
8	3-693	YES	CROSS HANDLE W/ESC.
9	20-527	YES	ESCUTCHEON ASM
10	91753		O-RING, # 2-136, EP, 50 DURO - GREY
11	20-524	YES	CROSS HANDLE ASM
12	1-226		WIDESPREAD MOUNTING HARDWARE
13	1-527		W/S CART/BODY ASM (HOT)
14	1-002		W/S CARTRIDGE - HOT
15	1-526		W/S CART/BODY ASM (COLD)
16	1-001		W/S CARTRIDGE - COLD
17	10288	YES	3/16" POP UP ROD
18	10827	YES	POP-UP KNOB
19	325	YES	POP UP ASSEMBLY

**WIDESPREAD FAUCET  
3300**

REV C EN-4728 11/06/23 APPROVED RS

**NEWPORT BRASS.**

t: 949.417.5207 | www.newportbrass.com