

NOTES:

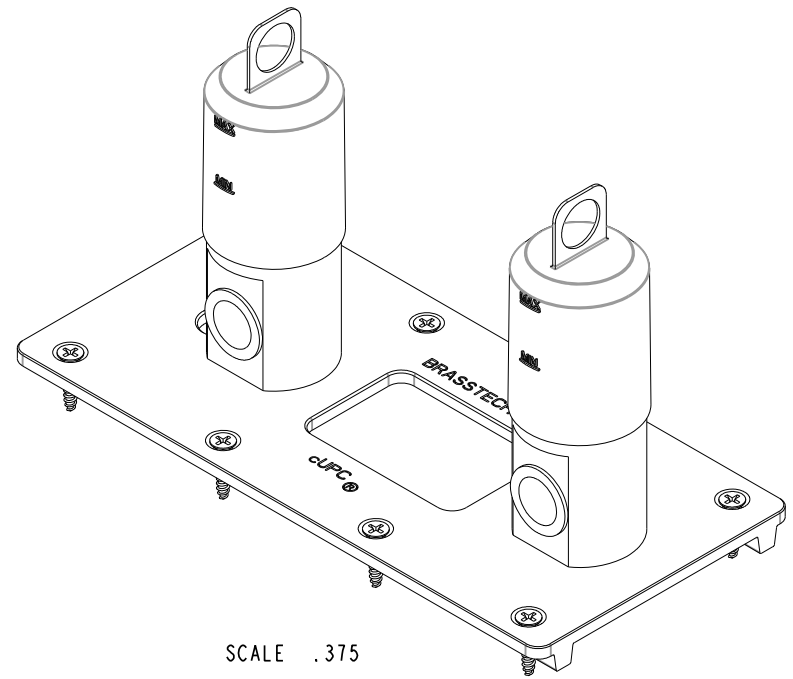
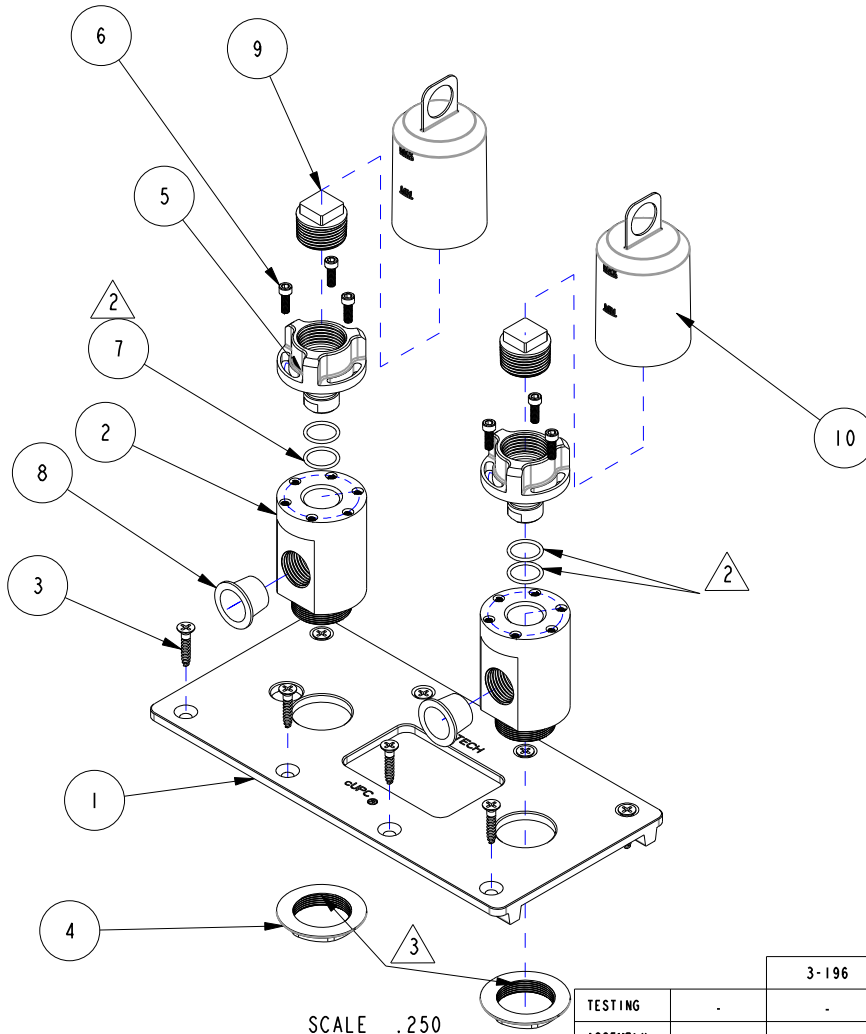
1. FIT / FORM / FUNCTION SHALL FOLLOW PS-E.008.

2. APPLY LIGHT FILM OF DOW CORNING III SILICONE COMPOUND.

3. APPLY TORQUE 30 LB-FT.

BILL OF MATERIAL (CURRENT LEVEL)

ITEM	PT/ASSY	DESCRIPTION	TYPE	QTY.
1	12785	Support Plate 6" & 7" Center Holes	PART	1
2	12786	ADAPTER	PART	2
3	92832	SCREW, #10 X 1 PHL FLT HD SS	PART	8
4	10174	NUT, QUICK CONNECT	PART	2
5	12787	QUICK CONNECT ADAPTER	PART	2
6	92835	SCRW, 8-32 X 1/2" HEX SKT HD CAP SS	PART	6
7	91020	O-RING, #2-016, EPDM, 65-75 DURO, NSF 6PART	PART	4
8	91720	PLASTIC PUSH-ON TAPERED CAPS	PART	2
9	91741	3/4 NPT PLUG	PART	2
10	91732	Muguard	PART	2



SCALE .250

SCALE .375

COPYRIGHT 2005 BRASSTECH, INC. THESE DRAWINGS AND THE DESIGNS DEPICTED HEREIN ARE THE PROPRIETARY PROPERTY OF BRASSTECH. ANY USE OR REPRODUCTION IS SUBJECT TO THE EXPRESS APPROVAL OF BRASSTECH. UNAUTHORIZED USE IS STRICTLY PROHIBITED. ALL RIGHTS RESERVED.

TESTING	-	3-196	920-4282
ASSEMBLY	-	-	1020-4283
PLATING	-	-	910-4283
POLISHING	-	NEXT ASSY	2400-4283
MACHINING	-	USED ON	
TOOLING FIXTURE #	-	APPLICATION	
		REMOVE ALL BURRS AND SHARP EDGES	

UNITS ARE: INCHES [MM]	
TOLERANCES ARE:	
FRACTIONS	DECIMALS
±1/16"	.X ±.1 [2.5]
	.XX ±.06 [1.5]
(X.XXX) DENOTES CRITICAL DIMS.	
ALL THREADS ARE CRITICAL	
DRAWN	J. AMOZOC
	7/24/17
CHECKED	V. VU
	7/24/17
APPROVED	V. VU
	-

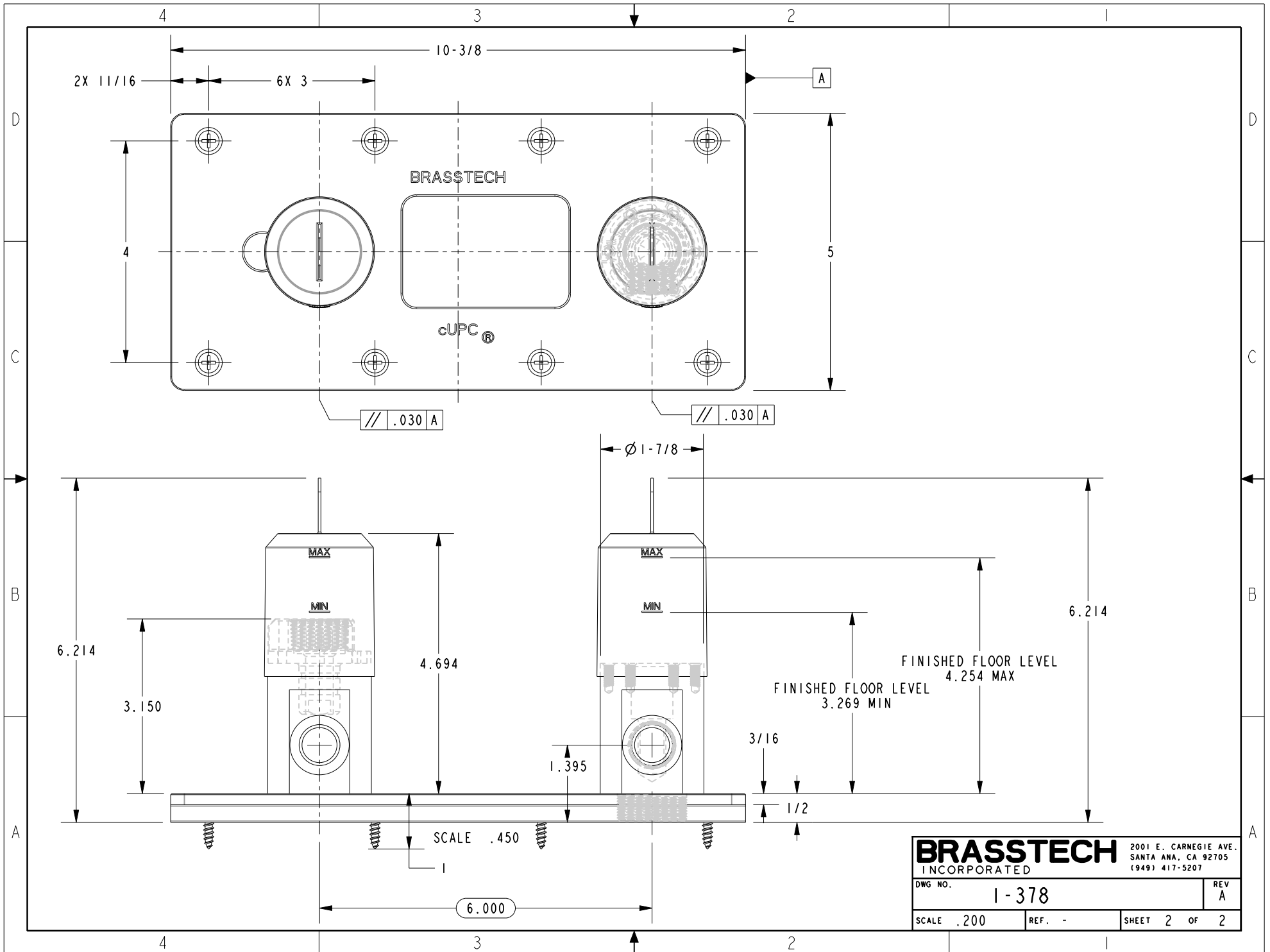
BRASSTECH 2001 CARNEGIE AVE. SANTA ANA, CA 92705 (949) 417-5207
INCORPORATED

Rough Kit For Floor Mount Tub Filler

DWG NO. 1-378 REV A

SCALE .200 REF. - SHEET 1 OF 2

-	A	EN-3893	06/17/19	C.G.
-	-	EN-3326	7/6/18	J.A.
ZONE	REV	DESCRIPTION	DATE	APPROVED



BRASSTECH		2001 E. CARNEGIE AVE. SANTA ANA, CA 92705 (949) 417-5207	
DWG NO.	1-378	REV	A
SCALE .200	REF. -	SHEET 2 OF 2	