
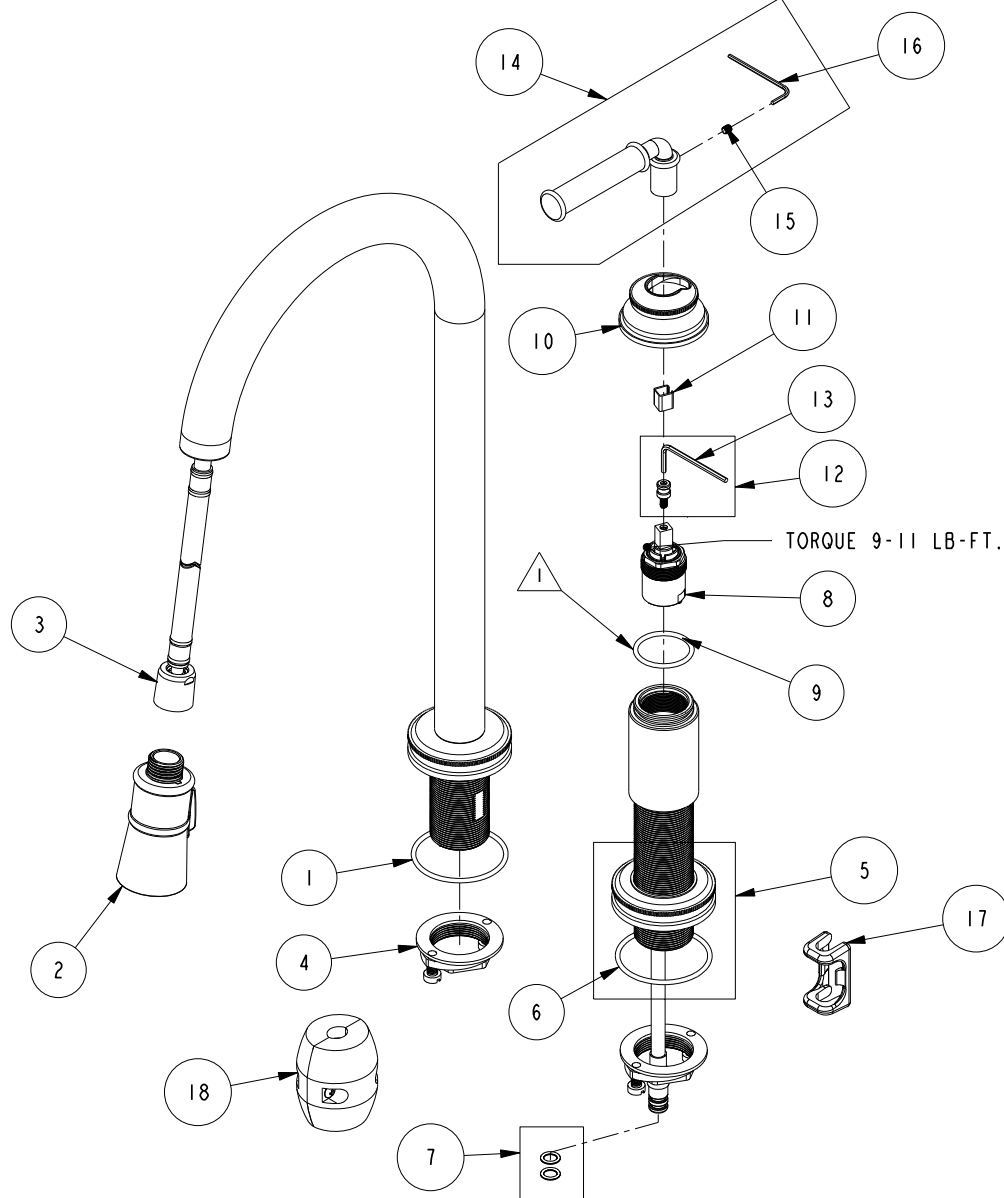


REPLACEMENT PARTS

NOTE:

 USE SILICON GREASE (PART NUMBER 6727) TO LUBRICATE O-RINGS BEFORE INSTALL.



ITEM	PT/ASSY	SPECIFY FINISH	DESCRIPTION
1	91753		O-RING, # 2-136, EP, 50 DURO - GREY
2	3-571	YES	SPRAY HEAD, TAFT
3	11877		HOSE, PULLDOWN SWIVEL
4	1-256		MOUNTING KIT
5	20-263	YES	ESCUTCHEON ASM
6	91753		O-RING, # 2-136, EP, 50 DURO - GREY
7	1-399		O-RING KIT FOR SPOUT PEX CONECTION
8	1-371		CARTRIDGE
9	91505		O-RING, #2-123, EPDM, 65-75 DURO
10	13827	YES	HANDLE HUB
11	91534		CARTRIDGE STEM INSERT
12	1-519		HANDLE ADAPTER SCREW WITH HEX KEY
13	10159		HEX KEY, 3/32 ALLOY STEEL
14	20-315	YES	HANDLE LEVER ASM
15	92001		SCRW, 8-32 X 3/16 SKT HD FLT PT SS
16	10192		HEX KEY TOOL, #8 5/64
17	91568		RETAINER CLIP
18	1-286		WEIGHT ASM

KITCHEN FAUCET PULLDOWN W/ REMOTE HANDLE
2940-5123

REV K EN-4741 11/29/23 APPROVED RS

NEWPORT BRASS.

t: 949.417.5207 | www.newportbrass.com