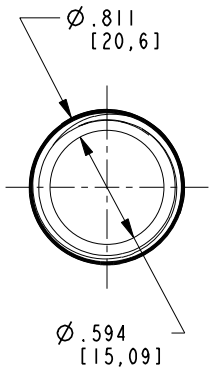
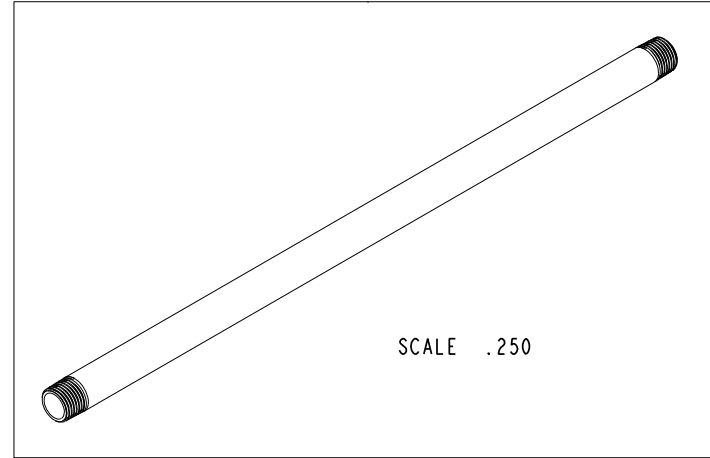


NOTES:

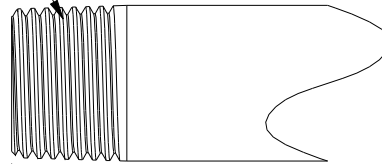
(NI) 1. FIT / FORM / FUNCTION SHALL FOLLOW PS-E.008.

**BILL OF MATERIAL (CURRENT LEVEL)**

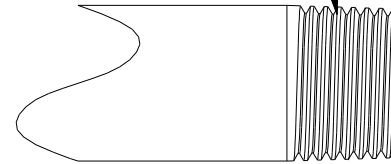
ITEM	PT/ASSY	DESCRIPTION	TYPE	QTY.
1	50558-18	NIPPLE 1/2-14 X 18"	PART	1



1/2-14 NPT



1/2-14 NPT



18.00 [457,2]

COPYRIGHT 2005 BRASSTECH, INC.  
THESE DRAWINGS AND THE DESIGNS  
DEPICTED HEREIN ARE THE PROPRIETARY  
PROPERTY OF BRASSTECH. ANY USE  
OR REPRODUCTION IS SUBJECT TO  
THE EXPRESS APPROVAL OF BRASSTECH.  
UNAUTHORIZED USE IS STRICTLY  
PROHIBITED. ALL RIGHTS RESERVED.

ZONE	REV	DESCRIPTION	DATE	APPROVED
-	-	EN-3678	08/06/18	J.M.

TESTING	ASSEMBLY	PLATING	POLISHING	MACHINING	TOOLING	FIXTURE #	APPLICATION
-	-	-	-	-	-	-	REMOVE ALL BURRS AND SHARP EDGES

UNITS ARE: INCHES [MM]	
TOLERANCES ARE:	
FRACTIONS	DECIMALS
ANGLES	
$\pm 1/16"$	$\pm .01$
$\pm 1"$	$\pm .5$
$\pm .005$	$\pm .001$
$\pm .01$	$\pm .002$

(X.XXX) DENOTES CRITICAL DIMS.  
ALL THREADS ARE CRITICAL

DRAWN	R.S.	08/06/18
CHECKED	J.M.	08/06/18
APPROVED	J.M.	08/06/18

**BRASSTECH** 2001 CARNEGIE AVE.  
INCORPORATED SANTA ANA, CA 92705  
(949) 417-5207

1/2" NPT NIPPLE

DWG NO.	200-7118	REV	-
SCALE	.500	REF.	-
SHEET		OF	