
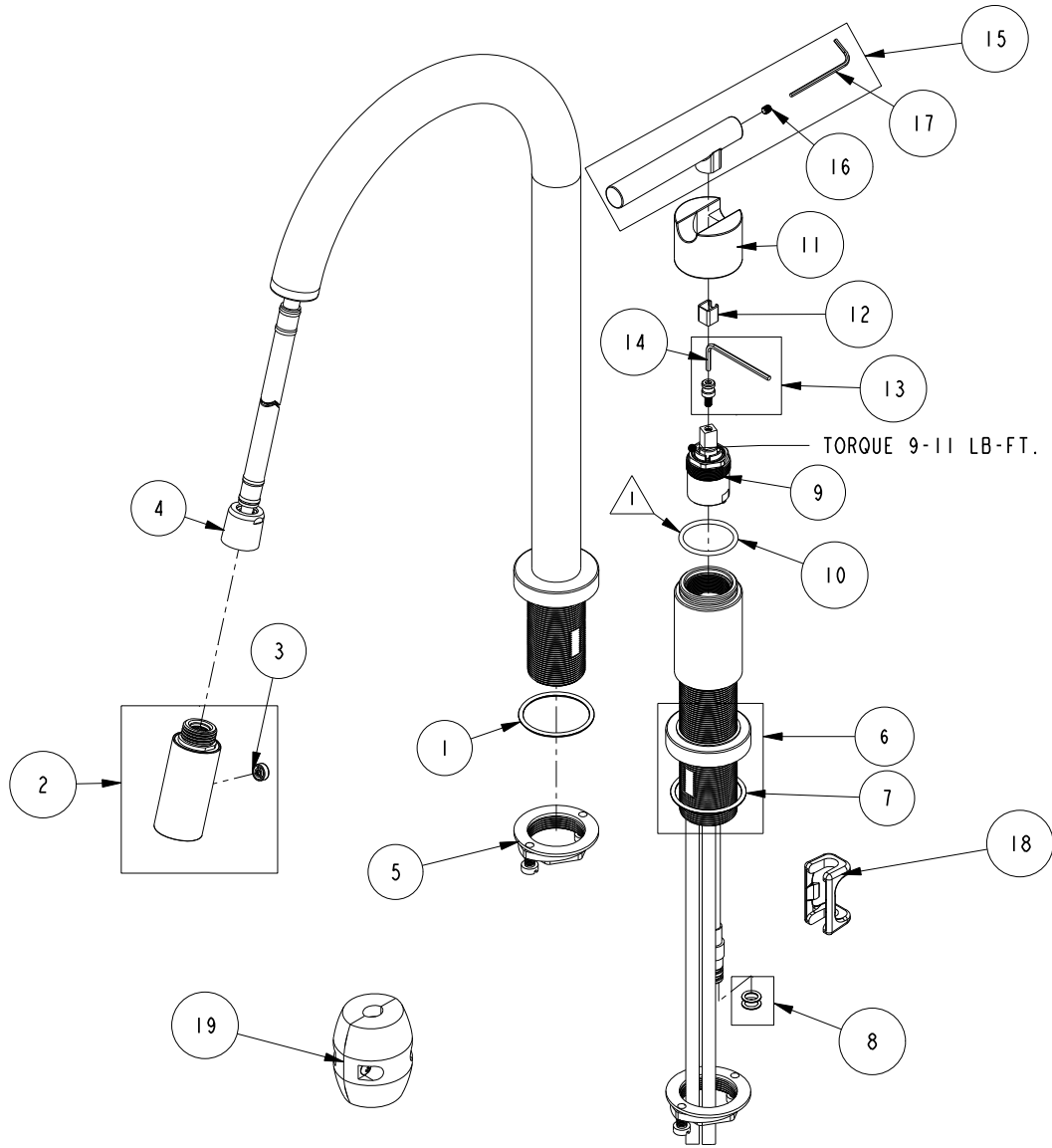


REPLACEMENT PARTS

NOTE:

 USE SILICON GREASE (PART NUMBER 6727) TO LUBRICATE O-RINGS BEFORE INSTALL.



ITEM	PT/ASSY	SPECIFY FINISH	DESCRIPTION
1	91763		O-RING, #2- 129, EP, 50 DURO - GREY
2	3-480	YES	SPRAY HEAD, EAST LINEAR
3	91667		BUTTON
4	11877		HOSE, PULLDOWN SWIVEL
5	1-256		MOUNTING KIT
6	20-390	YES	ESCUTCHEON ASM
7	91763		O-RING, #2- 129, EP, 50 DURO - GREY
8	1-399		O-RING KIT FOR SPOUT PEX CONECTION
9	1-371		CARTRIDGE
10	91505		O-RING, #2-123, EPDM, 65-75 DURO
11	13825	YES	HANDLE HUB, CONTEMP
12	91534		CARTRIDGE STEM INSERT
13	1-519		HANDLE ADAPTER SCREW WITH HEX KEY
14	10159		HEX KEY, 3/32 ALLOY STEEL
15	20-389	YES	HANDLE ASM
16	92001		SCRW, 8-32 X 3/16 SKT HD FLT PT SS
17	10192		HEX KEY TOOL, #8 5/64
18	91568		RETAINER CLIP
19	1-286		WEIGHT ASM

KITCHEN FAUCET PULLDOWN W/ REMOTE HANDLE
1500-5123

NEWPORT BRASS.

t: 949.417.5207 | www.newportbrass.com