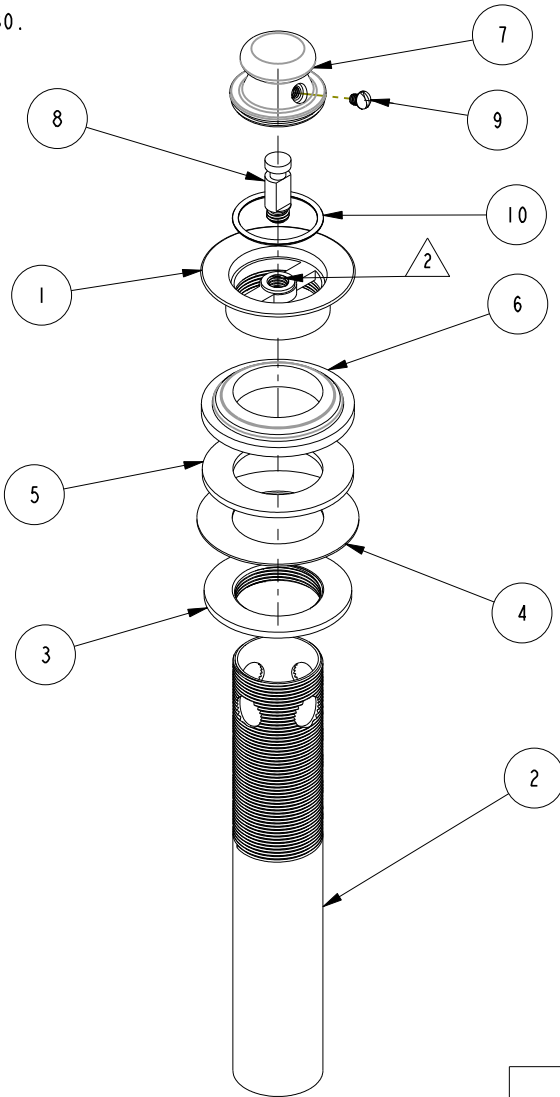


NOTES:

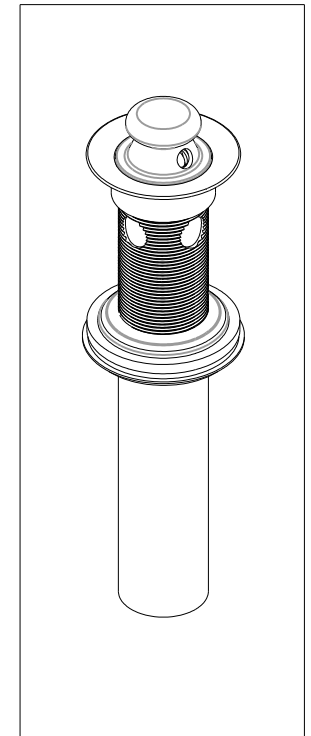
(NI) 1. TO INSPECT ASSEMBLY, FOLLOW FIRST ARTICLE AND IN PROCESS INSPECTION SHEET.

2 APPLY LOCTITE 680.



BILL OF MATERIAL (CURRENT LEVEL)

ITEM	PT/ASSY	DESCRIPTION	TYPE	QTY.
1	50333	FLANGE (320)	PART	1
2	50335	TLPP 1.25" OD X 7" (320)	PART	1
3	10209	MNT'G NUT - DRAIN FL	PART	1
4	50029	WSHR, 1.34 ID X 2.25 OD X .05 THK.	PART	1
5	91196	WASHER - 1-1/4 ID X .094 THK	PART	1
6	91197	WASHER - 1-1/4 MOLDED	PART	1
7	50332	STOPPER (320)	PART	1
8	50334	POST (320)	PART	1
9	92072	SCRW, 8-32 X .219 SLT RND w/ Ø .250 HD	PART	1
10	91195	O-RING, 2 X 28MM ID, EPDM, 65-75 DURO	PART	1



ZONE	REV	DESCRIPTION	DATE	APPROVED
-	C	EN-430011	10/11/21	N.S.
-	B	EN-2503	04/17/13	J.M.
-	A	EO-0646	01/30/06	T.B.
-	-	RELEASED	PRE' 95	-

COPYRIGHT 2005 BRASSTECH, INC. THESE DRAWINGS AND THE DESIGNS DEPICTED HEREIN ARE THE PROPRIETARY PROPERTY OF BRASSTECH. ANY USE OR REPRODUCTION IS SUBJECT TO THE EXPRESS APPROVAL OF BRASSTECH. UNAUTHORIZED USE IS STRICTLY PROHIBITED. ALL RIGHTS RESERVED.

TESTING	ASSEMBLY	PLATING	POLISHING	MACHINING	TOOLING FIXTURE #
-	-	-	-	-	-
				NEXT ASSY	USED ON
APPLICATION					
REMOVE ALL BURRS AND SHARP EDGES					

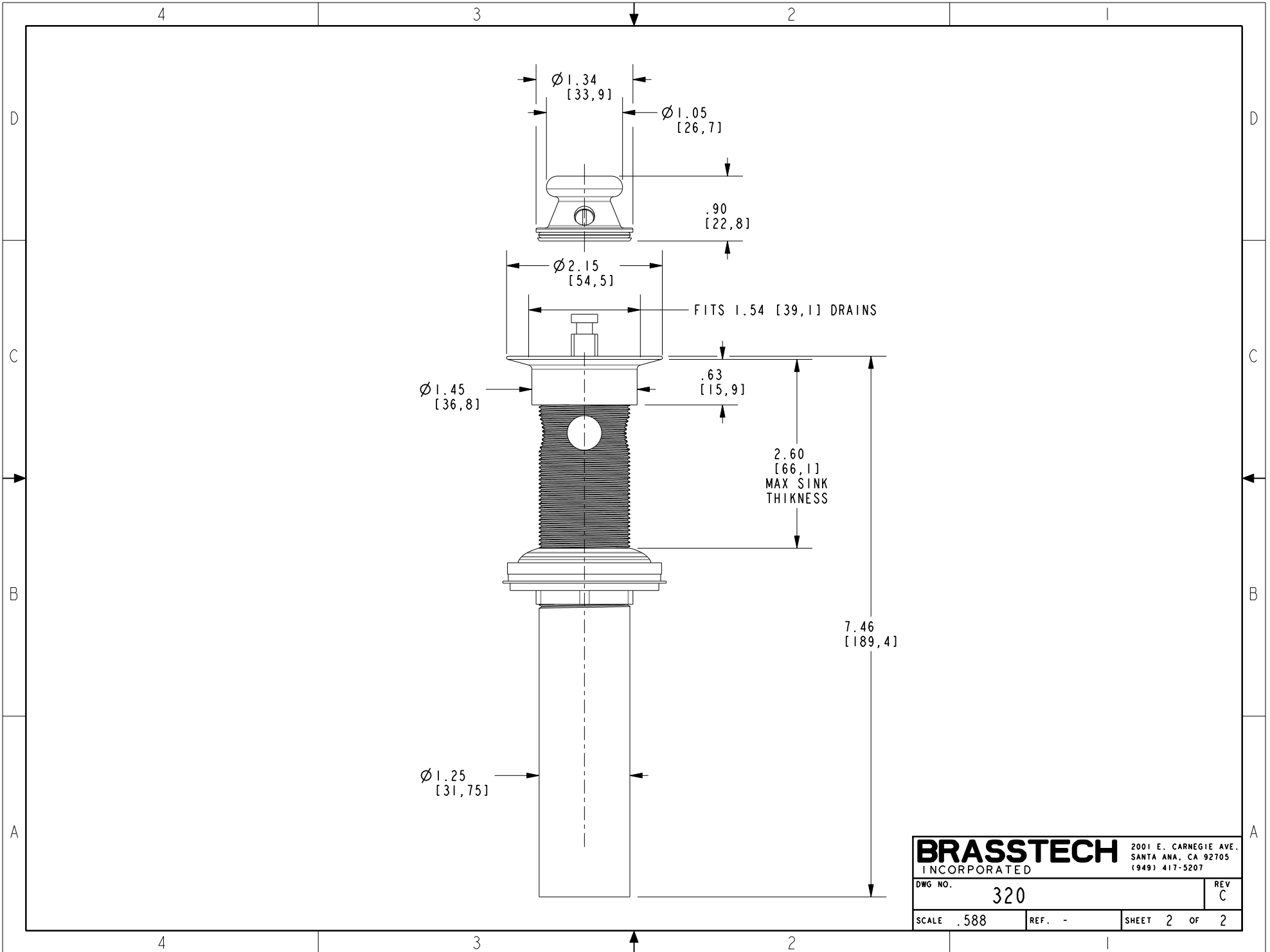
UNITS ARE: INCHES [MM]		
TOLERANCES ARE:		
FRACTIONS	DECIMALS	
ANGLES		
±1/16"	.X ±.1 [2.5]	±1°
	.XX ±.06 [1.5]	
(X.XXX) DENOTES CRITICAL DIMS. ALL THREADS ARE CRITICAL		
DRAWN	HMS	10/11/21
CHECKED	N. SANTOS	10/11/21
APPROVED	N. SANTOS	10/11/21

**BRASSTECH** 2001 CARNEGIE AVE. SANTA ANA, CA 92705 (949) 417-5207  
INCORPORATED

DRAIN - LIFT & TURN

DWG NO. 320

SCALE .375 REF. - SHEET 1 OF 2



<b>BRASSTECH</b>		2001 E. CARNEGIE AVE.
INCORPORATED		SANTA ANA, CA 92705
		(949) 417-5207
DWG NO.	320	REV C
SCALE .588	REF. -	SHEET 2 OF 2