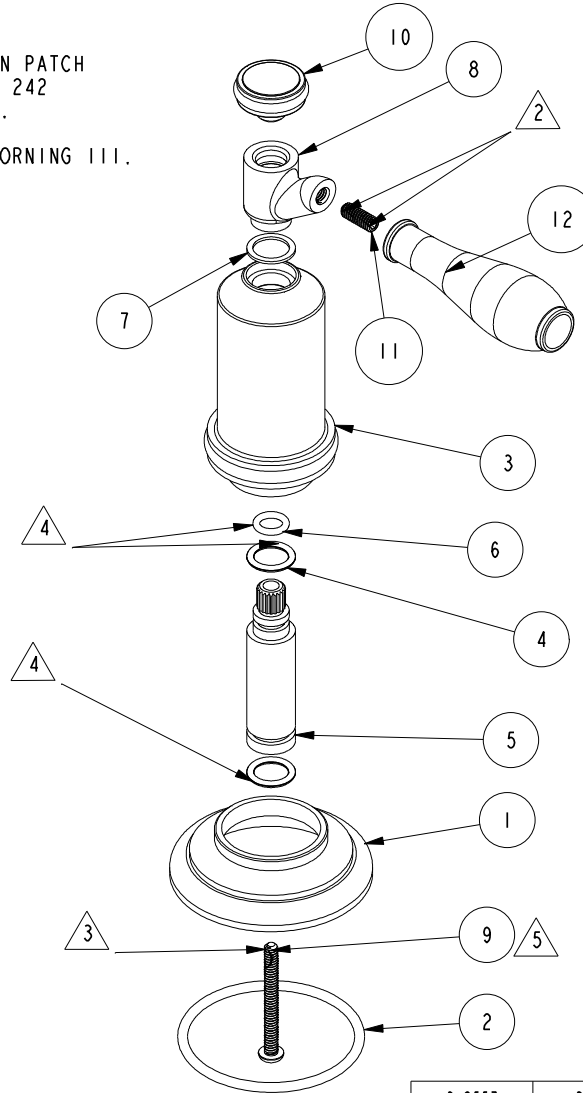


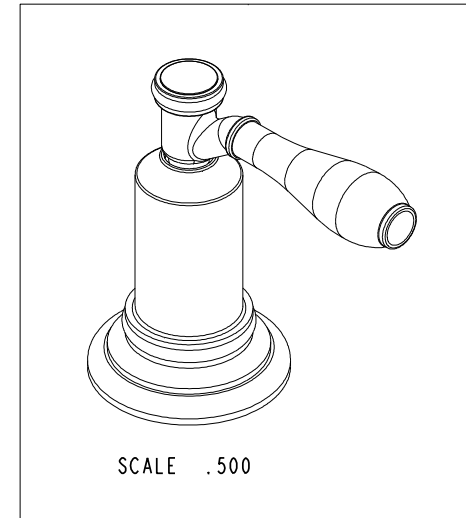
NOTES:

1. TO INSPECT ASSEMBLY, FOLLOW FIRST ARTICLE AND IN PROCESS INSPECTION SHEET.
2. APPLY LOCTITE 242.
3. ITEM AS RECEIVED HAS NYLON PATCH IF MISSING, APPLY LOCTITE 242 APPROXIMATELY WHERE SHOWN.
4. APPLY LIGHT FILM OF DOW CORNING 111.
5. APPLY TORQUE 6-8 LB-IN.



BILL OF MATERIAL (CURRENT LEVEL)

ITEM	PT/ASSY	DESCRIPTION	TYPE	QTY.
1	12633	ESCUTCHEON	PART	1
2	91762	O-RING, #2-132, EP, 50 DURO - GREY	PART	1
3	12634	BONNET	PART	1
4	91017	O-RING, #2- 012, EPDM, 65-75 DURO, NSF	BART	2
5	12632	HANDLE ADAPTER	PART	1
6	91049	O-RING, #2- 010, EPDM, 65-75 DURO, NSF	BART	1
7	91371	WASHER, HANDLE	PART	1
8	80148	HANDLE POST	PART	1
9	92439	SCRW, 6-32 X 1-3/8 TORX BUTTON HD SS W/PW/REON PATCH		
10	12636	HANDLE CAP	PART	1
11	92489	SCRW, 8-32 X 7/16 SKT HD CUP PT SS		
12	12635	LEVER	PART	1



		3-2557	3-2552BP
TESTING	-	3-2556	4-2554BP
ASSEMBLY	-	3-2555	4-2552BP
PLATING	-	2550	2550
POLISHING	-	NEXT ASSY	USED ON
MACHINING	-	APPLICATION	
TOOLING FIXTURE #		REMOVE ALL BURRS AND SHARP EDGES	

UNITS ARE: INCHES [MM]
TOLERANCES ARE:
FRACTIONS DECIMALS ANGLES
±1/16" .X ±.1 [2.5] ±1°
.XX ±.06 [1.5]

(X.XXX) DENOTES CRITICAL DIMS.
ALL THREADS ARE CRITICAL

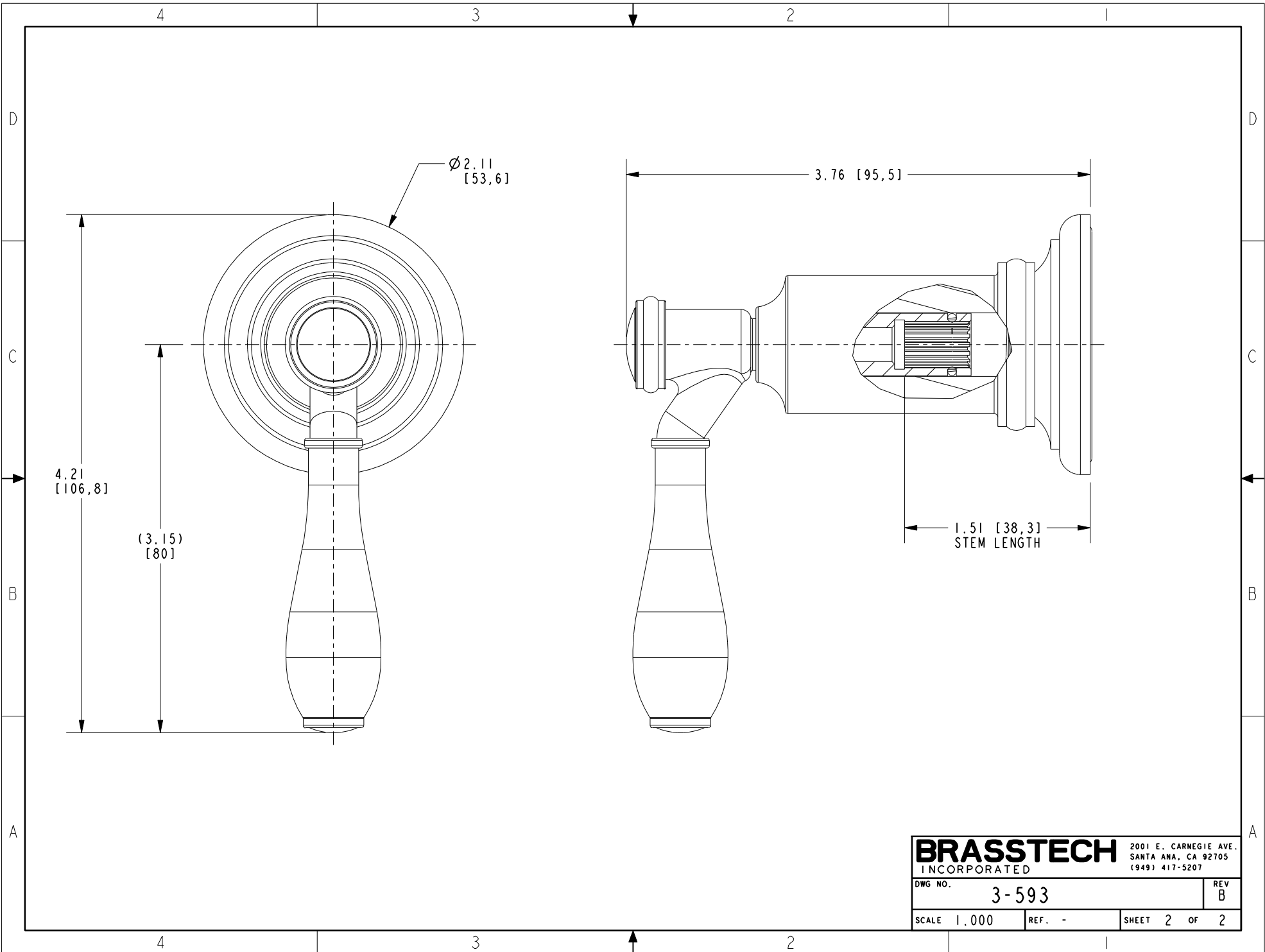
DRAWN JIMSON 12/16/20
CHECKED R.S. 12/16/20
APPROVED R.S. 12/16/20

BRASSTECH 2001 CARNEGIE AVE.
INCORPORATED SANTA ANA, CA 92705
(949) 417-5207

FLOW CONTROL HANDLE

DWG NO.	3-593	REV	B
SCALE	.500	REF.	-
SHEET	1	OF	2

-	B	EN-4300j	12/16/20	R.S.	COPYRIGHT 2005 BRASSTECH, INC. THESE DRAWINGS AND THE DESIGNS DEPICTED HEREIN ARE THE PROPRIETARY PROPERTY OF BRASSTECH. ANY USE OR REPRODUCTION IS SUBJECT TO THE EXPRESS APPROVAL OF BRASSTECH. UNAUTHORIZED USE IS STRICTLY PROHIBITED. ALL RIGHTS RESERVED.
-	A	EN-3722	02/08/19	C.G.	
-	-	EN-3271	5/15/17	J.A.	
ZONE	REV	DESCRIPTION	DATE	APPROVED	



BRASSTECH		2001 E. CARNEGIE AVE. SANTA ANA, CA 92705 (949) 417-5207	
DWG NO.	3-593	REV	B
SCALE	1.000	REF.	-
		SHEET	2 OF 2