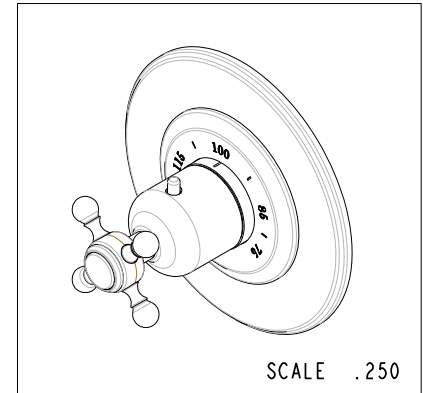
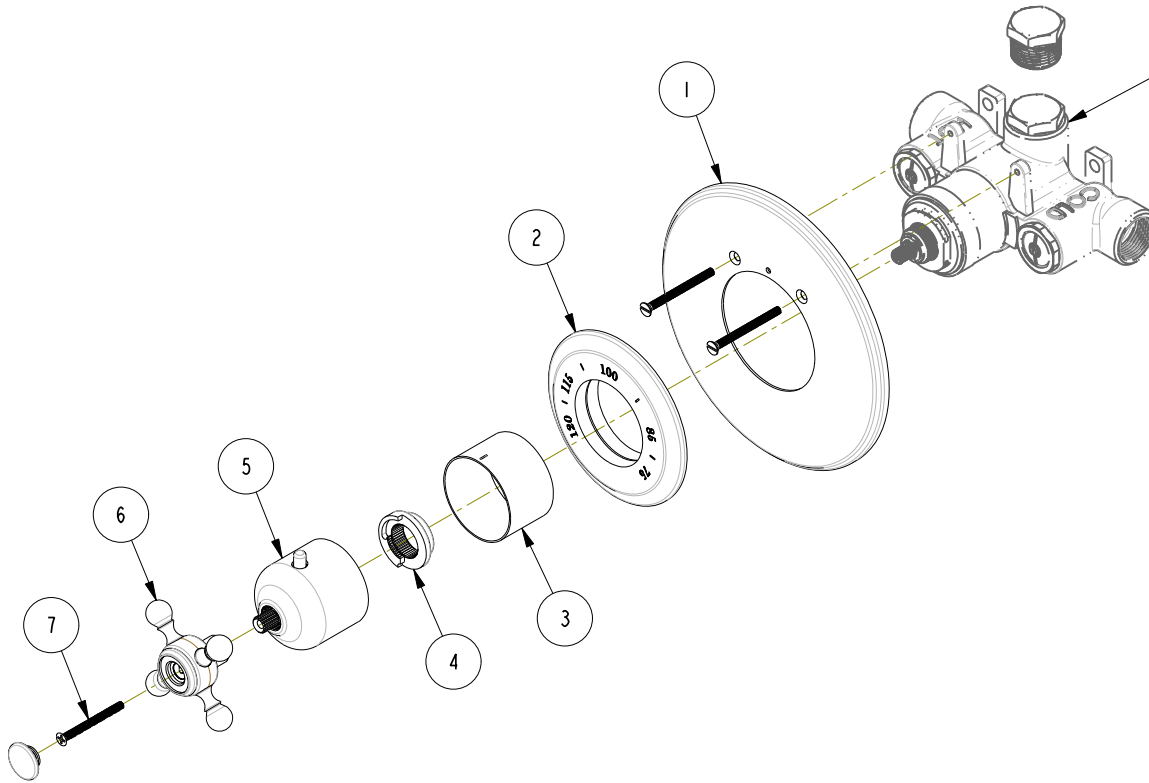


NOTES:

(N1) 1. FIT / FORM / FUNCTION SHALL FOLLOW PS-E.008.

**BILL OF MATERIAL (CURRENT LEVEL)**

ITEM	PT/ASSY	DESCRIPTION	TYPE	QTY.
1	2-500	THERMO SHOWER PLATE ROUND	ASSEMBLY	1
2	2-558	NOMENCLATURE RING ASM	ASSEMBLY	1
3	11029	SLEEVE - THERMO	PART	1
4	91308	TEMP LIMIT STOP - THERMO	PART	1
5	20-325	THERMO BONNET ASM - TRAD	ASSEMBLY	1
6	2-559	CROSS HANDLE ASM	ASSEMBLY	1
7	92206	SCRW, M4 X 0.7 X 45 PHIL FLT HD SS	PART	1



ZONE	REV	DESCRIPTION	DATE	APPROVED	
-	B	EN-3502	12/20/17	JM	COPYRIGHT 2005 BRASSTECH, INC. THESE DRAWINGS AND THE DESIGNS DEPICTED HEREIN ARE THE PROPRIETARY PROPERTY OF BRASSTECH. ANY USE OR REPRODUCTION IS SUBJECT TO THE EXPRESS APPROVAL OF BRASSTECH. UNAUTHORIZED USE IS STRICTLY PROHIBITED. ALL RIGHTS RESERVED.
-	A	EO-0769	10/11/06	-	
-	-	EO-0744	07/14/06	-	
-	-	-	-	-	

TESTING	-	-	-
ASSEMBLY	-	-	-
PLATING	-	-	-
POLISHING	-	NEXT ASSY	USED ON
MACHINING	-	APPLICATION	
TOOLING FIXTURE #	REMOVE ALL BURRS AND SHARP EDGES		

UNITS ARE: INCHES [MM]  
 TOLERANCES ARE:  
 FRACTIONS DECIMALS ANGLES  
 $\pm 1/16^{\circ}$  .X  $\pm .1$  (2.5)  $\pm 1^{\circ}$   
 .XX  $\pm .06$  (1.5)

(X.XXX) DENOTES CRITICAL DIMS.  
 ALL THREADS ARE CRITICAL

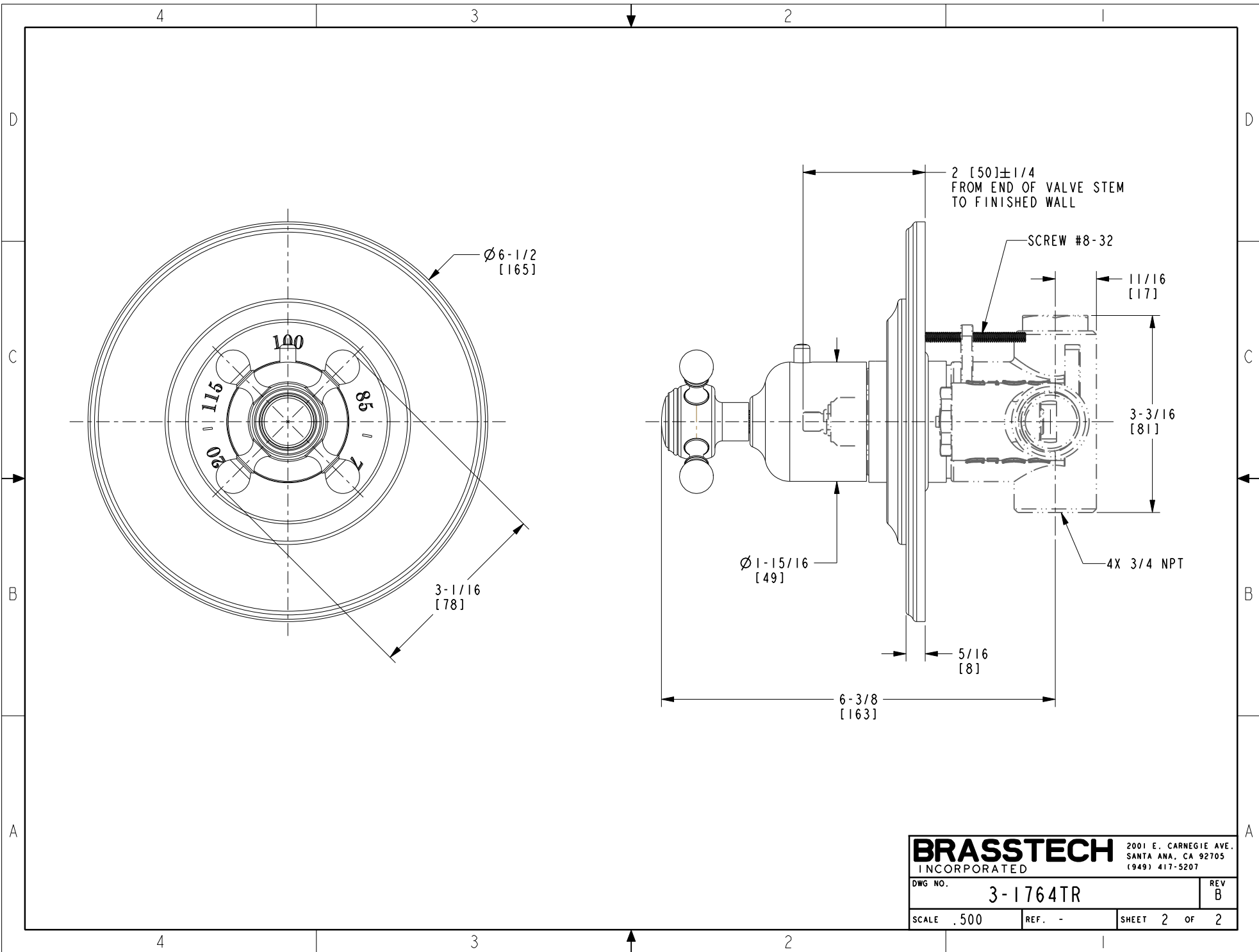
DRAWN AN -  
 CHECKED AN -  
 APPROVED JM -

**BRASSTECH** 2001 CARNEGIE AVE.  
 INCORPORATED SANTA ANA, CA 92705  
 (949) 417-5207

**THERMO SHOWER TRIM**

DWG NO. **3-1764TR** REV **B**

SCALE .250 REF. - SHEET 1 OF 2



<b>BRASSTECH</b>		2001 E. CARNEGIE AVE. SANTA ANA, CA 92705 (949) 417-5207	
INCORPORATED			
DWG NO.	3-1764TR		REV B
SCALE .500	REF. -	SHEET 2 OF 2	