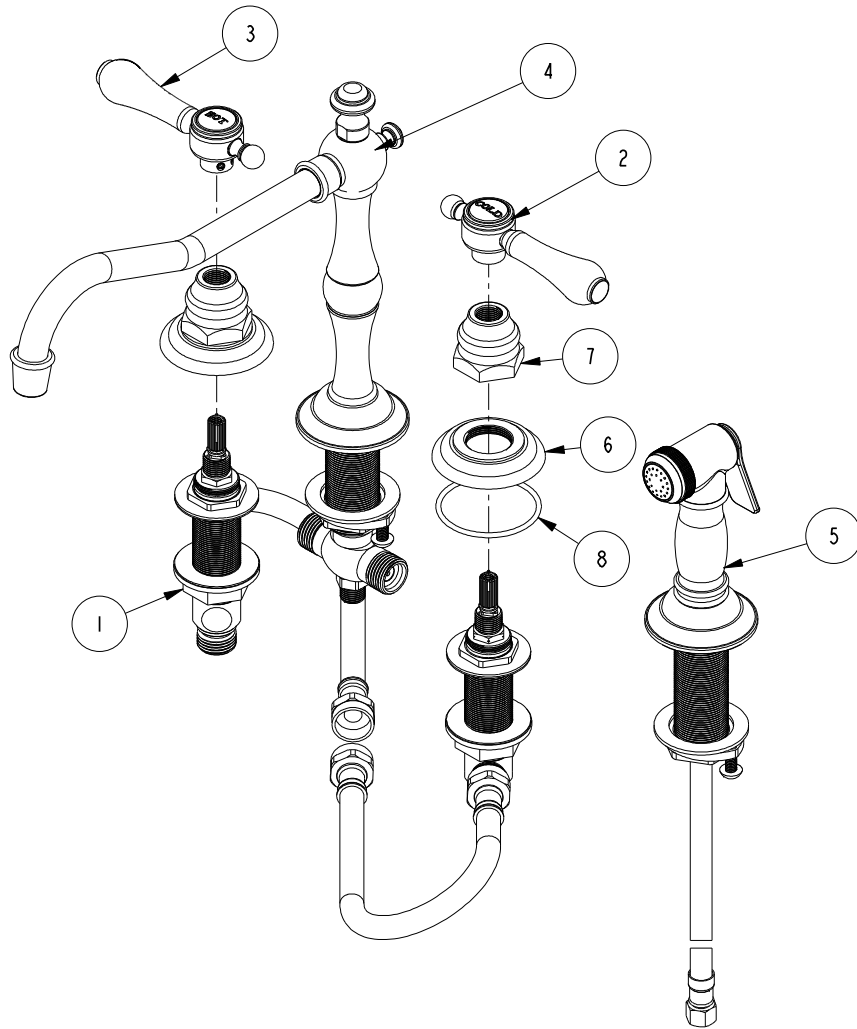


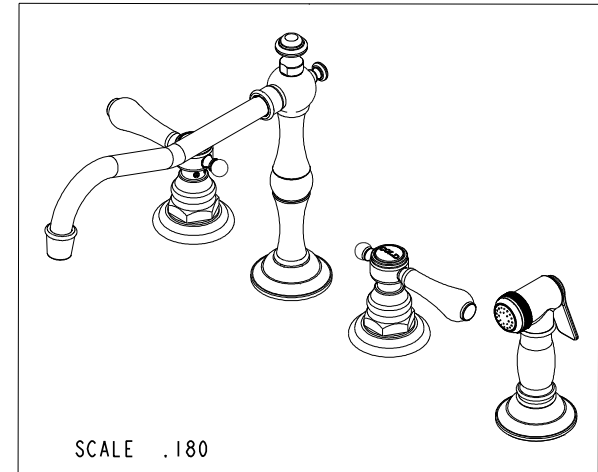
NOTES:

1. TO INSPECT ASSEMBLY, FOLLOW FIRST ARTICLE AND IN PROCESS INSPECTION SHEET.



BILL OF MATERIAL (CURRENT LEVEL)

ITEM	PT/ASSY	DESCRIPTION	TYPE	QTY.
1	1-541	VALVE KIT - 943	ASSEMBLY	1
2	2-133	HANDLE ASSEMBLY - COLD	ASSEMBLY	1
3	2-134	HANDLE ASSEMBLY - HOT	ASSEMBLY	1
4	2-174	SPOUT ASM - 943	ASSEMBLY	1
5	129	KITCHEN SPRAY HEAD	ASSEMBLY	1
6	10048	ESCUTCHEON W/S VALVE	PART	2
7	10523	HEX ESCUTCHEON BONNET	PART	2
8	91753	O-RING, # 2-136, EP, 50 DURO - GREY	PART	2



ZONE	REV	DESCRIPTION	DATE	APPROVED
-	C	EN-4300gg	03/02/21	R. S.
-	B	EN-3722	02/08/19	C. G.
-	A	EN-3777	01/08/19	V. V.
-	-	EN-3426	10/16/17	AN

COPYRIGHT 2005 BRASSTECH, INC. THESE DRAWINGS AND THE DESIGNS DEPICTED HEREIN ARE THE PROPRIETARY PROPERTY OF BRASSTECH. ANY USE OR REPRODUCTION IS SUBJECT TO THE EXPRESS APPROVAL OF BRASSTECH. UNAUTHORIZED USE IS STRICTLY PROHIBITED. ALL RIGHTS RESERVED.

TESTING	-	-	-
ASSEMBLY	-	-	-
PLATING	-		
POLISHING	-	NEXT ASSY	USED ON
MACHINING	-	APPLICATION	
TOOLING FIXTURE #		REMOVE ALL BURRS AND SHARP EDGES	

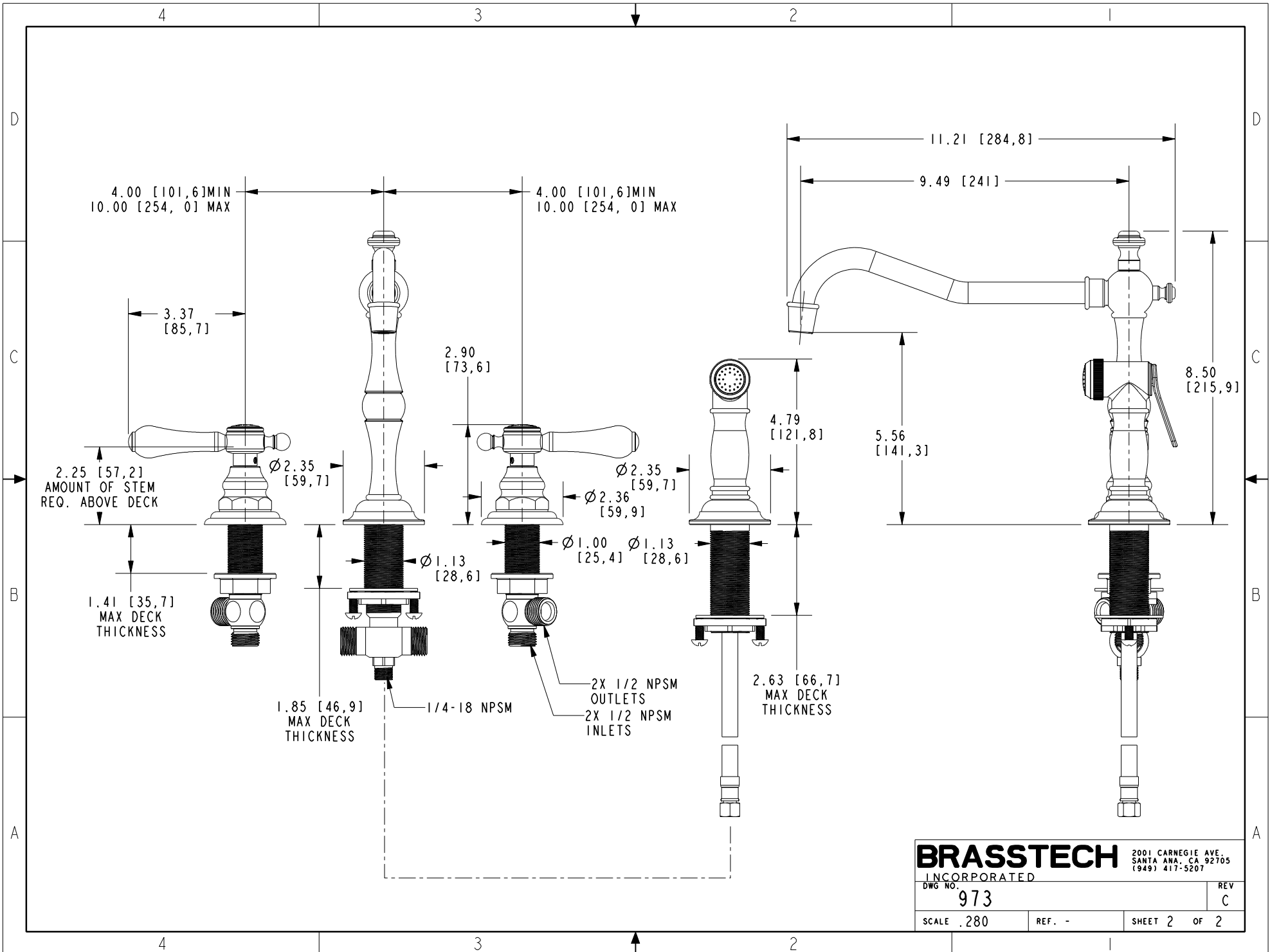
UNITS ARE: INCHES [MM]	
FRACTIONS	DECIMALS
±1/16"	.X ±.1 [2.5]
	.XX ±.06 [1.5]
(X.XXX) DENOTES CRITICAL DIMS. ALL THREADS ARE CRITICAL	
DRAWN	RAVINDRA 10/14/17
CHECKED	JINSON 10/14/17
APPROVED	AN 10/16/17

BRASSTECH 2001 CARNEGIE AVE. SANTA ANA, CA 92705 (949) 417-5207
INCORPORATED

KITCHEN FAUCET WITH SPRAY

DWG NO. **973** REV C

SCALE .250 REF. - SHEET 1 OF 2



BRASSTECH 2001 CARNEGIE AVE.
 INCORPORATED SANTA ANA, CA 92705
 (949) 417-5207

DWG NO.	973	REV	C
SCALE	.280	REF.	-
SHEET 2		OF 2	