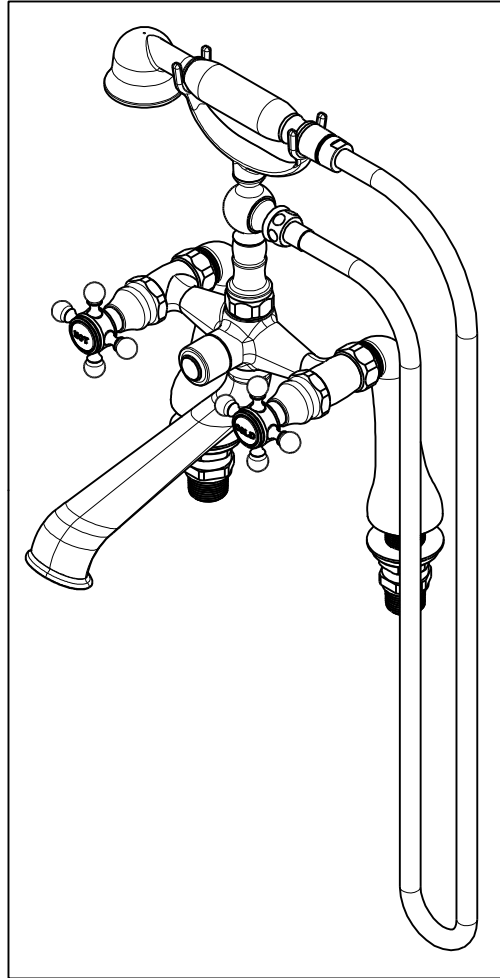


NOTES:

1. TO INSPECT ASSEMBLY, FOLLOW FIRST ARTICLE AND IN PROCESS INSPECTION SHEET.



BILL OF MATERIAL (CURRENT LEVEL)

| ITEM | PT/ASSY | DESCRIPTION | TYPE | QTY. |
|------|---------|--|----------|------|
| 1 | 12894 | BODY - FOR 933,934 | PART | 1 |
| 2 | 2-220 | RISER ASM | ASSEMBLY | 1 |
| 3 | 284 | 59 IN. SPIRAL SHOWER HOSE | ASSEMBLY | 1 |
| 4 | 281 | HANDSHOWER ASM | ASSEMBLY | 1 |
| 5 | 12585 | SPOUT | PART | 1 |
| 6 | 91022 | O-RING, #2- 018, EPDM, 65-75 DURO, NSF 61 | PART | 1 |
| 7 | 1-325 | W/S CARTRIDGE FRICTION - COLD | PART | 1 |
| 8 | 1-326 | W/S CARTRIDGE FRICTION - HOT | PART | 1 |
| 9 | 12062 | ADAPTER - 20-T X 16-T | PART | 2 |
| 10 | 10442 | SEAT FOR CARTRIDGE | PART | 2 |
| 11 | 91020 | O-RING, #2-016, EPDM, 65-75 DURO, NSF 61 | PART | 2 |
| 12 | 10332 | HEX NUT | PART | 2 |
| 13 | 91039 | WSHR, .625 ID X 1.00 OD X .125 THK, RUBBER | PART | 2 |
| 14 | 10336 | LEG - LEFT | PART | 1 |
| 15 | 10335 | LEG - RIGHT | PART | 1 |
| 16 | 1-049 | MOUNTING HARDWARE | ASSEMBLY | 1 |
| 17 | 92539 | SCRW, M4X22 FLAT HD SOCKET HD CAP | PART | 2 |
| 18 | 12518 | BONNET | PART | 2 |
| 19 | 2-141 | HANDLE ONLY, HOT | ASSEMBLY | 1 |
| 20 | 2-142 | HANDLE ONLY, COLD | ASSEMBLY | 1 |
| 21 | 20-260 | DIVERTER ASM | ASSEMBLY | 1 |
| 22 | 20-259 | DIVERTER ASM | ASSEMBLY | 1 |
| 23 | 13313 | DIVERTER BUTTON | PART | 1 |

| ZONE | REV | DESCRIPTION | DATE | APPROVED |
|------|-----|-------------|----------|----------|
| - | D | EN-4300h | 01/05/21 | R.S. |
| - | C | EN-3565A | 01/22/20 | C.G. |
| - | B | EN-3447 | 10/27/17 | V.V. |
| - | A | EN-3150a | 05/18/17 | J.M. |
| - | - | EN-3058b | 09/13/16 | AN |

COPYRIGHT 2005 BRASSTECH, INC. THESE DRAWINGS AND THE DESIGNS DEPICTED HEREIN ARE THE PROPRIETARY PROPERTY OF BRASSTECH. ANY USE OR REPRODUCTION IS SUBJECT TO THE EXPRESS APPROVAL OF BRASSTECH. UNAUTHORIZED USE IS STRICTLY PROHIBITED. ALL RIGHTS RESERVED.

| TESTING | - | - | - |
|-------------------|----------------------------------|-------------|---------|
| ASSEMBLY | - | - | - |
| PLATING | - | - | - |
| POLISHING | - | NEXT ASSY | USED ON |
| MACHINING | - | APPLICATION | |
| TOOLING FIXTURE # | REMOVE ALL BURRS AND SHARP EDGES | | |

UNITS ARE: INCHES [MM]
TOLERANCES ARE:
FRACTIONS DECIMALS ANGLES
±1/16" .X ±.1 [2,5] ±°
.XX ±.06 [1,5]

(X.XXX) DENOTES CRITICAL DIMS.
ALL THREADS ARE CRITICAL

| | | |
|----------|--------|----------|
| DRAWN | JINSON | 01/05/21 |
| CHECKED | R.S. | 01/05/21 |
| APPROVED | R.S. | 01/05/21 |

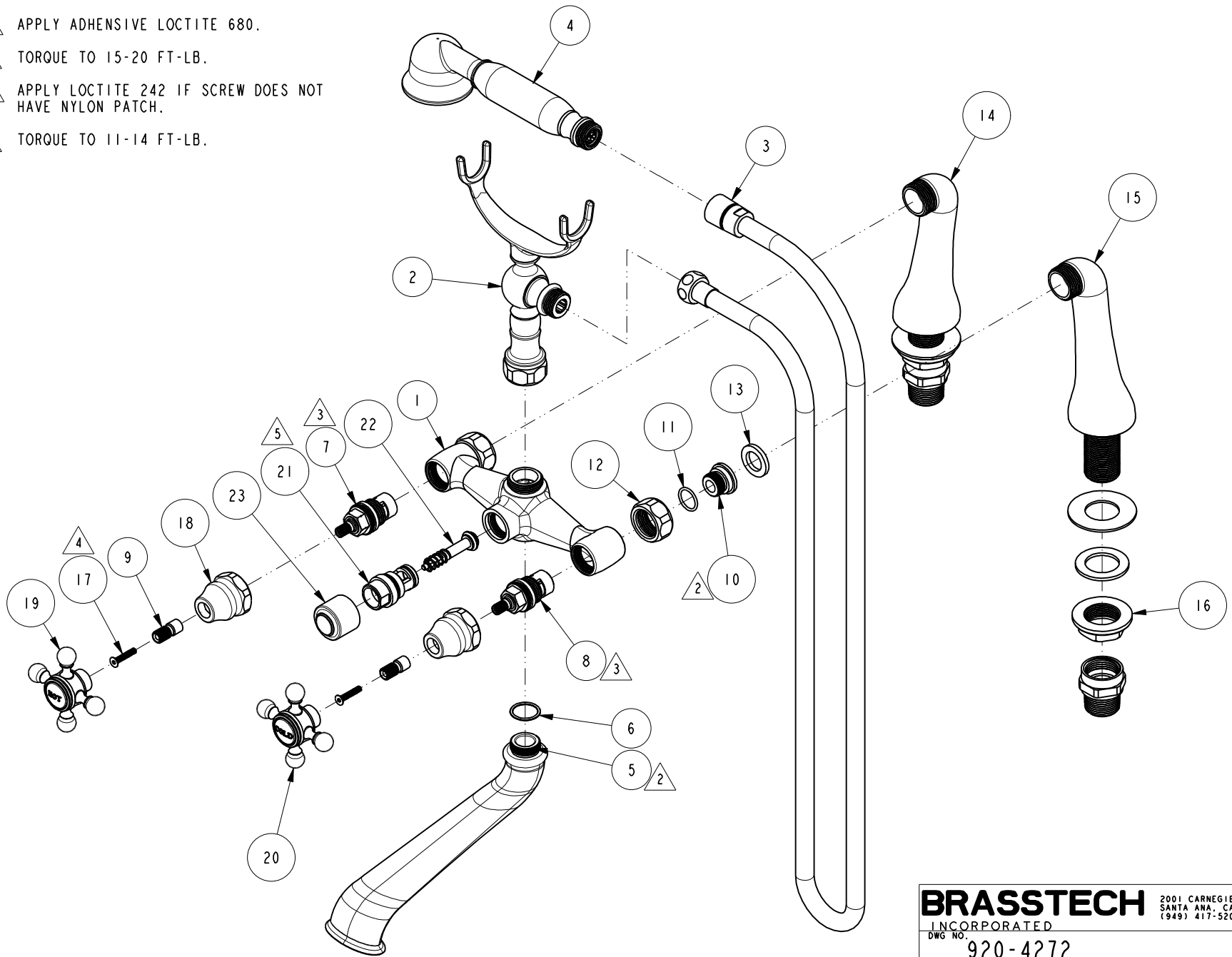
BRASSTECH 2001 CARNEGIE AVE.
INCORPORATED SANTA ANA, CA 92705
(949) 417-5207

EXPOSED TUB FILLER, DECK MOUNT

DWG NO. **920-4272** REV **D**

SCALE .200 REF. - SHEET 1 OF 3

- △ 2. APPLY ADHENSIVE LOCTITE 680.
- △ 3. TORQUE TO 15-20 FT-LB.
- △ 4. APPLY LOCTITE 242 IF SCREW DOES NOT HAVE NYLON PATCH.
- △ 5. TORQUE TO 11-14 FT-LB.



| | | | |
|------------------|--------|---|--|
| BRASSTECH | | 2001 CARNEGIE AVE. SANTA ANA, CA 92705 (949) 417-5207 | |
| INCORPORATED | | | |
| DWG NO. 920-4272 | | REV D | |
| SCALE .250 | REF. - | SHEET 2 OF 3 | |

