

NOTES:

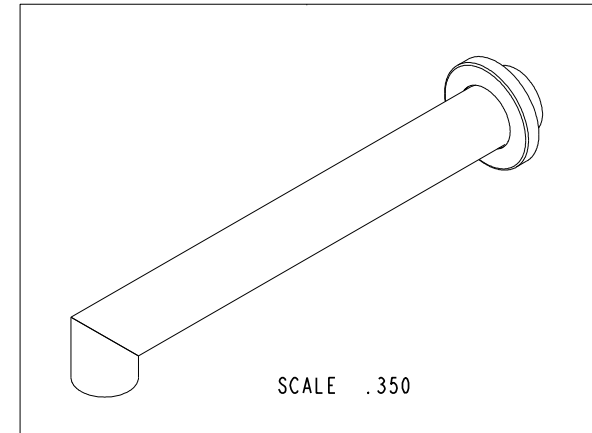
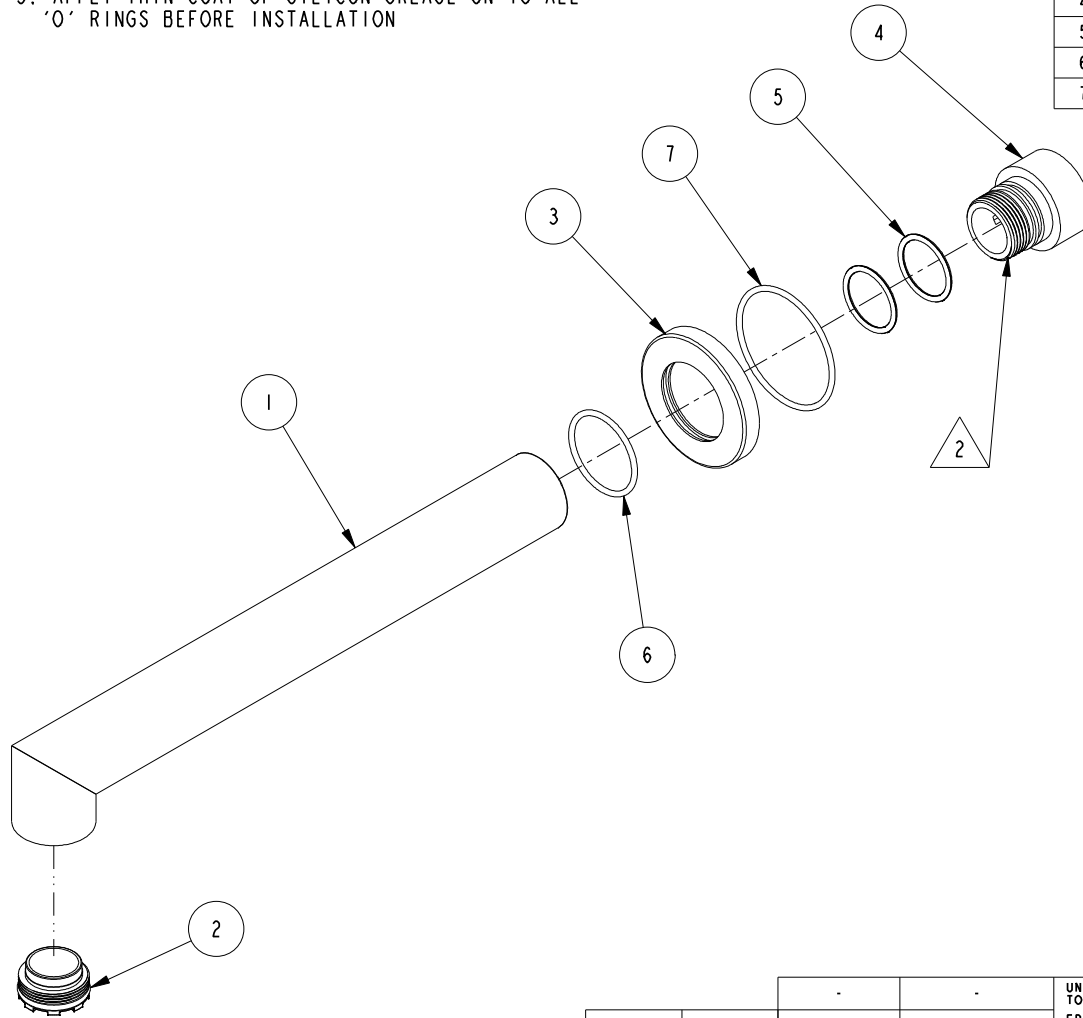
1. TO INSPECT ASSEMBLY, FOLLOW FIRST ARTICLE AND IN PROCESS INSPECTION SHEET.

2. APPLY PERMANENT THREAD LOCKER (LOCTITE 680)

3. APPLY THIN COAT OF SILICON GREASE ON TO ALL 'O' RINGS BEFORE INSTALLATION

BILL OF MATERIAL (CURRENT LEVEL)

ITEM	PT/ASSY	DESCRIPTION	TYPE	QTY.
1	2-720	W/M TUB - SPOUT BRAZE ASM	ASSEMBLY	1
2	11711	HIDDEN FAUCET AERATOR	PART	1
3	11893	W/M TUB- ESCUTCHEON	PART	1
4	11894	WALL MOUNT TUB - ADAPTER	PART	1
5	91022	O-RING, #2- 018, EPDM, 65-75 DURO, NSF 61	PART	2
6	91024	O-RING, #2- 022, EPDM, 65-75 DURO	PART	1
7	91766	O-RING, #2-029, 50 DURO	PART	1



ZONE	REV	DESCRIPTION	DATE	APPROVED
-	C	EN-4300ii	01/25/21	R.S.
-	B	EN-3722	02/08/19	C.G.
-	A	EN-0995-3	03/09/11	-
-	-	EN-0995-3	01/31/11	-

COPYRIGHT 2005 BRASSTECH, INC. THESE DRAWINGS AND THE DESIGNS DEPICTED HEREIN ARE THE PROPRIETARY PROPERTY OF BRASSTECH. ANY USE OR REPRODUCTION IS SUBJECT TO THE EXPRESS APPROVAL OF BRASSTECH. UNAUTHORIZED USE IS STRICTLY PROHIBITED. ALL RIGHTS RESERVED.

TESTING	-	-	-
ASSEMBLY	-	-	-
PLATING	-	3-3125	3-3125
POLISHING	-	NEXT ASSY	USED ON
MACHINING	-	APPLICATION	
TOOLING FIXTURE #	REMOVE ALL BURRS AND SHARP EDGES		

UNITS ARE: INCHES [MM]		
TOLERANCES ARE:		
FRACTIONS	DECIMALS	ANGLES
±1/16"	.X ±.1 [2.5]	±1°
	.XX ±.06 [1.5]	
(X.XXX) DENOTES CRITICAL DIMS.		
ALL THREADS ARE CRITICAL		
DRAWN	JIMSON	02/08/19
CHECKED	C.G.	02/08/19
APPROVED	C.G.	02/08/19

BRASSTECH 2001 CARNEGIE AVE.
SANTA ANA, CA 92705
(949) 417-5207

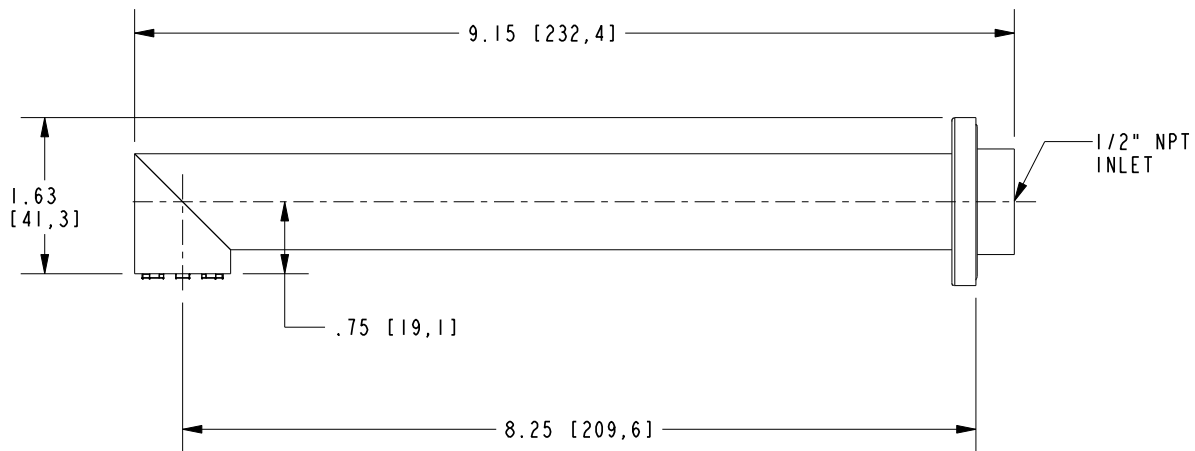
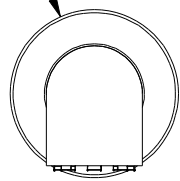
INCORPORATED

SPOUT & ESCUTCHEON ASM - WALL MOUNT TUB

DWG NO. **3-407** REV **C**

SCALE .438 REF. - SHEET 1 OF 2

Ø 1.75 [44,45]



BRASSTECH

2001 CARNEGIE AVE.
SANTA ANA, CA 92705
(949) 417-5207

INCORPORATED

DWG NO.

3-407

REV

C

SCALE .500

REF. -

SHEET 2 OF 2