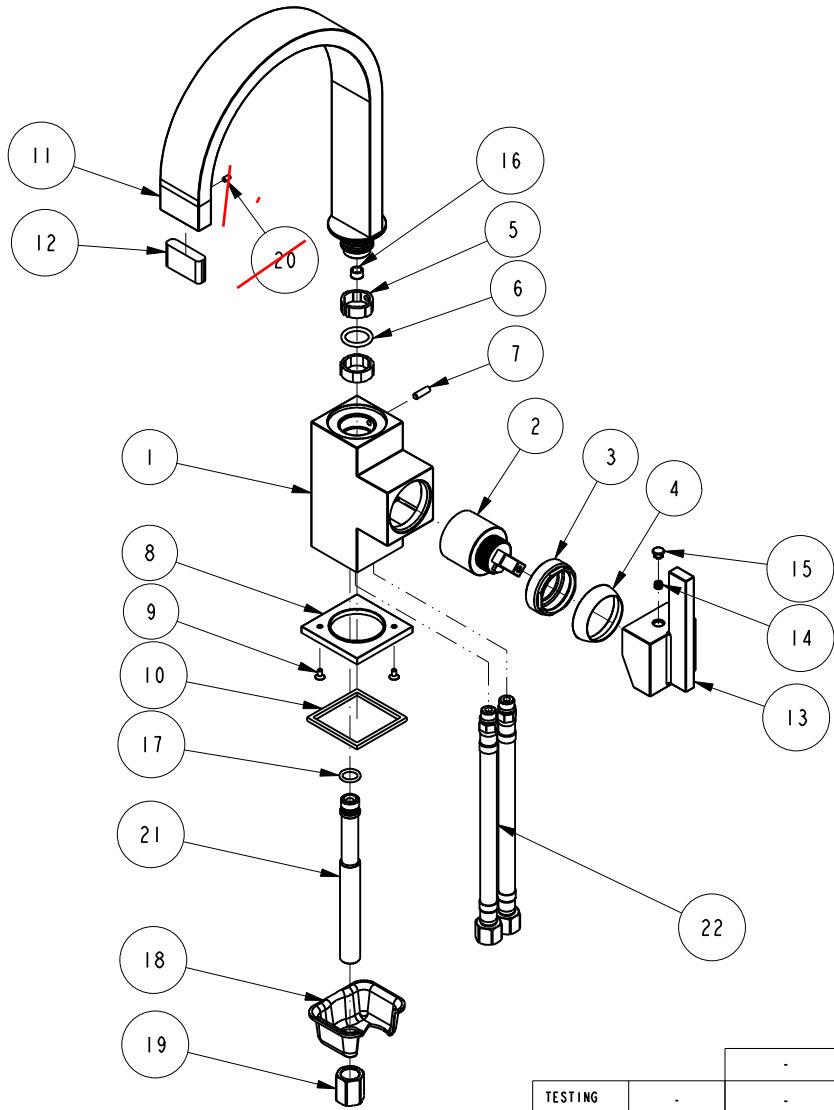


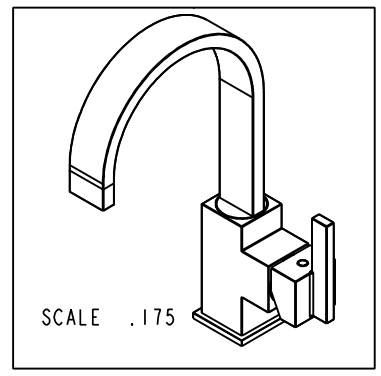
NOTES:

(N1) 1. FIT / FORM / FUNCTION SHALL FOLLOW PS-E.008.



BILL OF MATERIAL (CURRENT LEVEL)

ITEM	PT/ASSY	DESCRIPTION	TYPE	QTY.
1	CTYN0166	BODY	PART	1
2	ATBA0051	CARTRIDGE	PART	1
3	CTKB0120	RETAINER	PART	1
4	CTCB0650	COVER	PART	1
5	CTRP0081	CLIP	PART	2
6	CTRR0181	O-RING	PART	1
7	CTST0233	SCREW	PART	1
8	CTDZ0083	FLANGE	PART	1
9	CTST3000	SCREW	PART	2
10	CTWR0322	WASHER	PART	1
11	B001224	SPOUT	ASSEMBLY	1
12	32X8	FLOW RESTRICTOR	PART	1
13	CTHZ0527	HANDLE	PART	1
14	CTST0084_F-8703	SCREW	PART	1
15	CTCP0072_F-8703	CAP	PART	1
16	ATBA0095	FLOW RESTRICTOR	ASSEMBLY	1
17	CTRR0048	O-RING	PART	1
18	CTLT0023	FLANGE	PART	1
19	CTNB0067	NUT	PART	1
20	M3	SCREW	PART	1
21	B001299	CONNECTING	PART	1
22	ATBP0403	HOSE	ASSEMBLY	2



J.A. 1/12/17

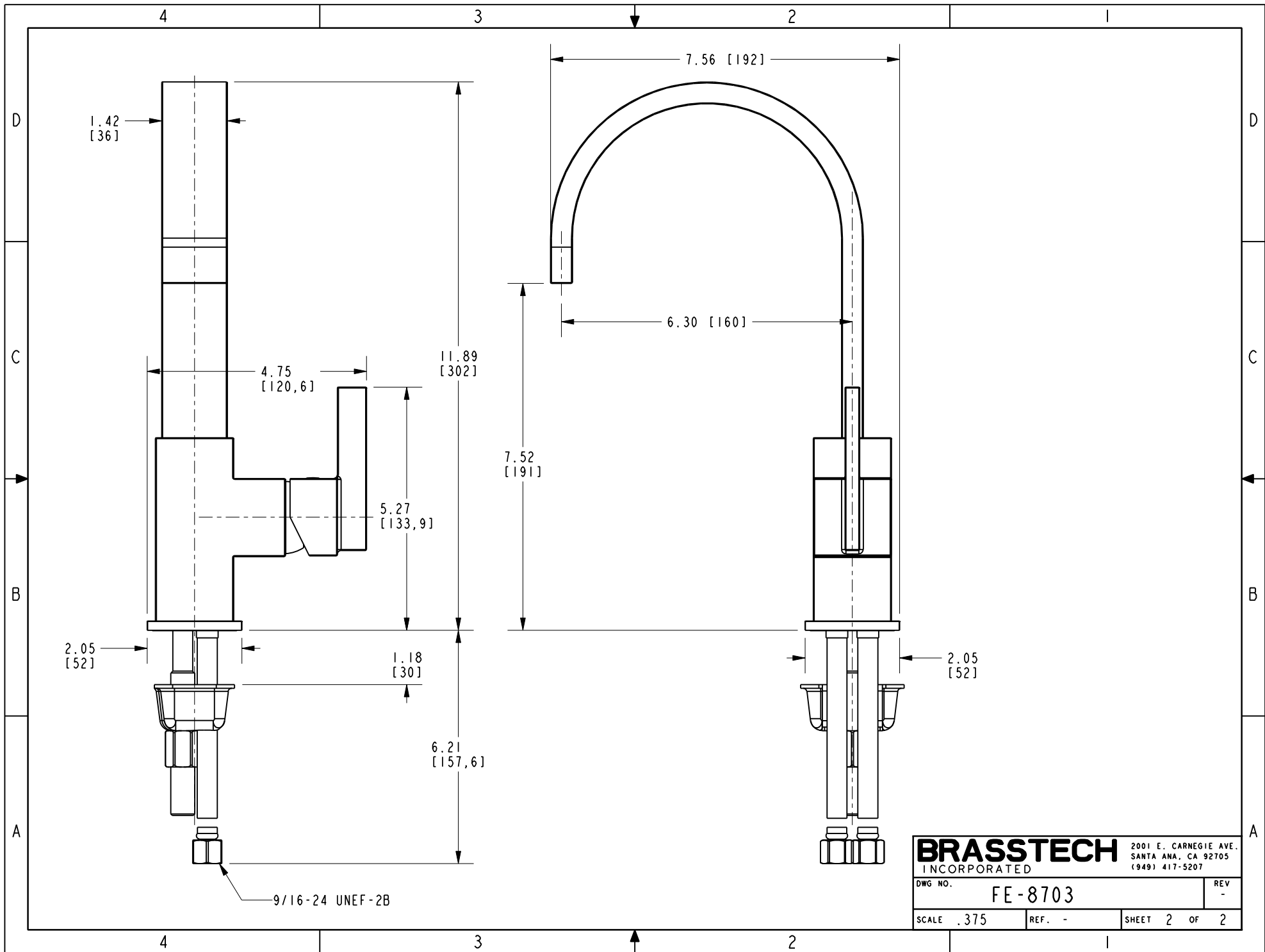
COPYRIGHT 2005 BRASSTECH, INC. THESE DRAWINGS AND THE DESIGNS DEPICTED HEREIN ARE THE PROPRIETARY PROPERTY OF BRASSTECH. ANY USE OR REPRODUCTION IS SUBJECT TO THE EXPRESS APPROVAL OF BRASSTECH. UNAUTHORIZED USE IS STRICTLY PROHIBITED. ALL RIGHTS RESERVED.

ZONE	REV	DESCRIPTION	DATE	APPROVED
-	-	EN-3304	04/26/17	J.A.

TESTING	ASSEMBLY	PLATING	POLISHING	MACHINING	TOOLING FIXTURE #
-	-	-	-	-	-
					REMOVE ALL BURRS AND SHARP EDGES

UNITS ARE: INCHES [MM]	
TOLERANCES ARE:	
FRACTIONS DECIMALS	ANGLES
±1/16"	±1°
.X ±.1 [2,5]	
.XX ±.06 [1,3]	
(X.XXX) DENOTES CRITICAL DIMS.	
ALL THREADS ARE CRITICAL	
DRAWN	JINSON 04/26/17
CHECKED	RAVINDRA 04/26/17
APPROVED	J.A. 04/26/17

BRASSTECH		2001 CARNEGIE AVE. SANTA ANA, CA 92705 (949) 417-5207	
INCORPORATED			
SINGLE CONTROL LAV FAUCET			
DWG NO.	FE-8703	REV	-
SCALE	.200	REF.	-
SHEET	1	OF	2



BRASSTECH		2001 E. CARNEGIE AVE.
INCORPORATED		SANTA ANA, CA 92705
		(949) 417-5207
DWG NO.	FE-8703	REV -
SCALE .375	REF. -	SHEET 2 OF 2