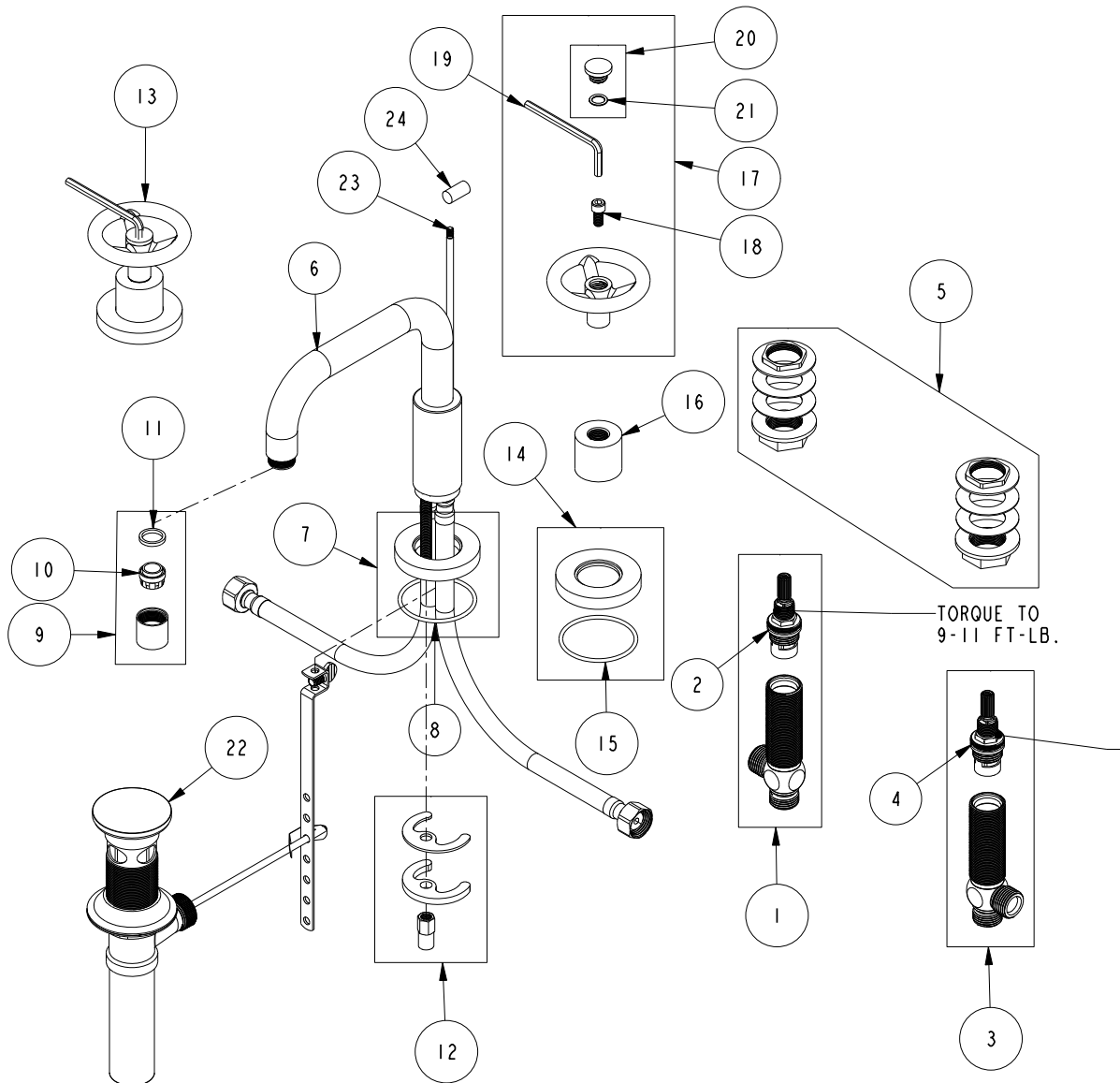


# REPLACEMENT PARTS



ITEM	PT/ASSY	SPECIFY FINISH	DESCRIPTION
1	1-527		W/S CART/BODY ASM (HOT)
2	1-002		W/S CARTRIDGE - HOT
3	1-526		W/S CART/BODY ASM (COLD)
4	1-001		W/S CARTRIDGE - COLD
5	1-027		WIDE SPREAD MOUNTING HARDWARE
6	3-613	YES	WIDESPREAD SPOUT ASSY
7	2-101	YES	SPOUT BASE RING ASM
8	91753		O-RING, # 2-136, EP, 50 DURO - GREY
9	2-693	YES	AERATOR ASM
10	12403		AERATOR INSERT, Jr. SIZE, 1.2 GPM
11	91500		GSKT, .578 ID X .728 OD X .102 THK EPDM
12	1-491		SPOUT MOUNTING KIT
13	3-570	YES	HANDLE/ ESC ASM
14	2-100	YES	ESCUTCHEON - ASSEMBLY
15	91753		O-RING, # 2-136, EP, 50 DURO - GREY
16	10620	YES	BONNET
17	20-143	YES	HANDLE ASM
18	92141		SCREW, CAP HD 1/4-20 X 1/2
19	92846		HEX KEY, 3/16" ALLOY STEEL
20	20-738	YES	HANDLE CAP ASM
21	91017		O-RING #2-012
22	325	YES	POP UP ASSEMBLY
23	10288	YES	3/16" POP UP ROD
24	10827	YES	POP-UP KNOB

**WIDESPREAD DECK FAUCET  
2960**

REV C EN-4728 11/07/23 APPROVED RS

**NEWPORT BRASS.**

t: 949.417.5207 | www.newportbrass.com