

4

3

2

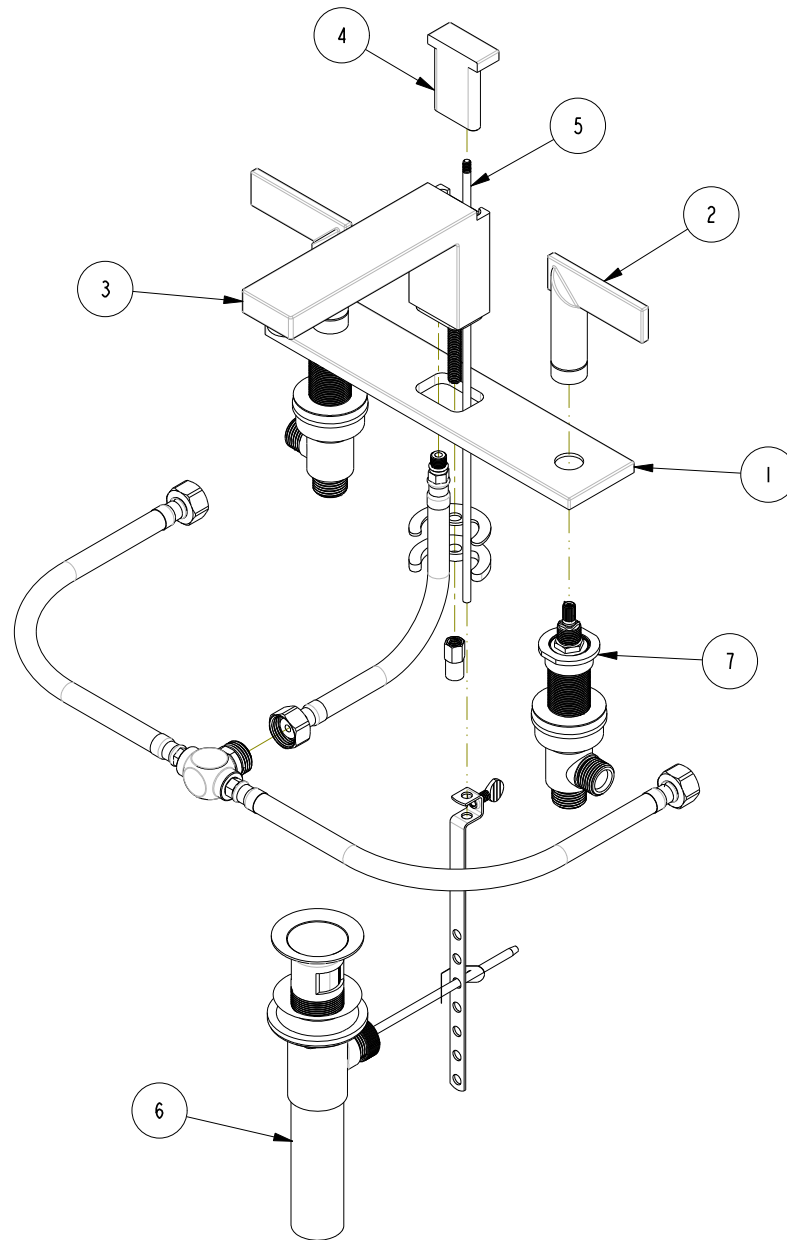
1

D

C

B

A



BILL OF MATERIAL (CURRENT LEVEL)

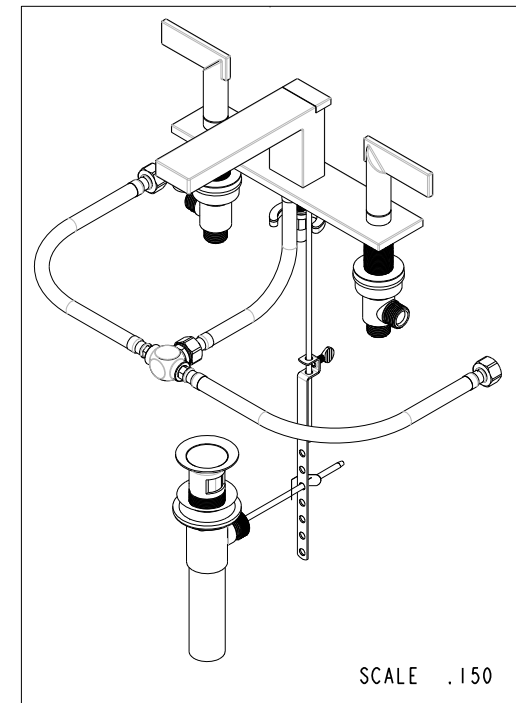
ITEM	PT/ASSY	DESCRIPTION	TYPE	QTY.
1	8-027	WIDESPREAD DECK PLATE ASM	ASSEMBLY	1
2	2-801	HANDLE ASM	ASSEMBLY	2
3	2-795	WIDESPREAD SPOUT ASM	ASSEMBLY	1
4	80030	POP UP KNOB	PART	1
5	10288	3/16" POP UP ROD	PART	1
6	325	POP UP ASSEMBLY	ASSEMBLY	1
7	1-590	WIDESPREAD VALVE KIT	ASSEMBLY	1

D

C

B

A



SCALE .150

COPYRIGHT 2005 BRASSTECH, INC. THESE DRAWINGS AND THE DESIGNS DEPICTED HEREIN ARE THE PROPRIETARY PROPERTY OF BRASSTECH. ANY USE OR REPRODUCTION IS SUBJECT TO THE EXPRESS APPROVAL OF BRASSTECH. UNAUTHORIZED USE IS STRICTLY PROHIBITED. ALL RIGHTS RESERVED.

BRASSTECH
INCORPORATED

2001 E. CARNEGIE AVE.
SANTA ANA, CA 92705
(949) 417-5207

W/S LAVATORY FAUCET,
SINGLE BASE PLATE

ASSY. NO.
2540A

SCALE .220

REF. -

SHEET 1 OF 2

C	EN-2120	04/05/12
B	EN-1913	02/29/12
A	EN-1512	11/09/11
-	EN-1735	06/10/11
REV	REV DESC	DATE

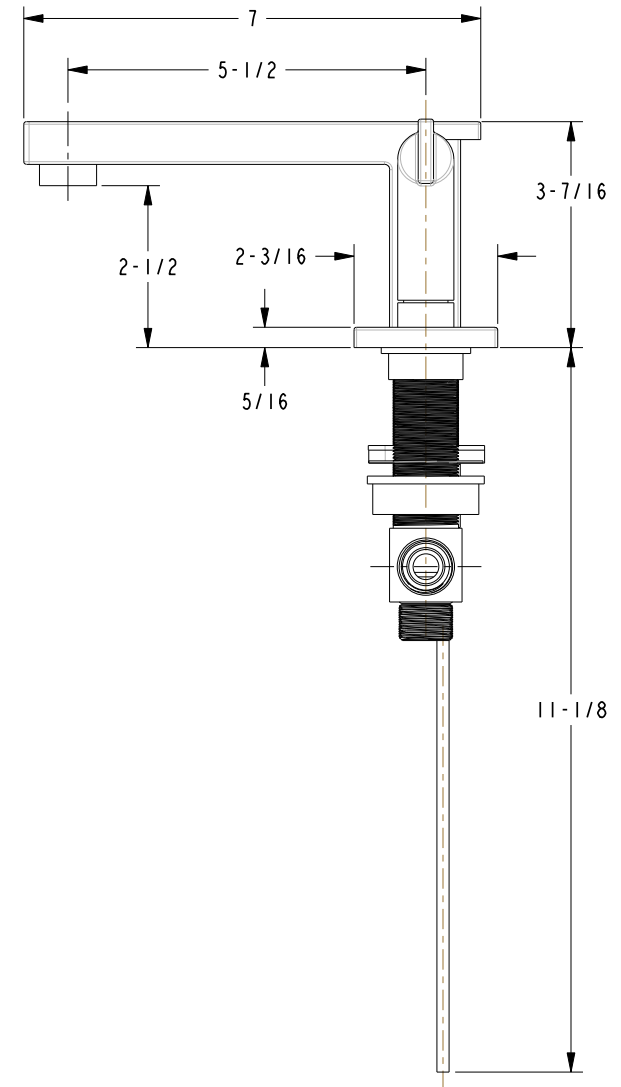
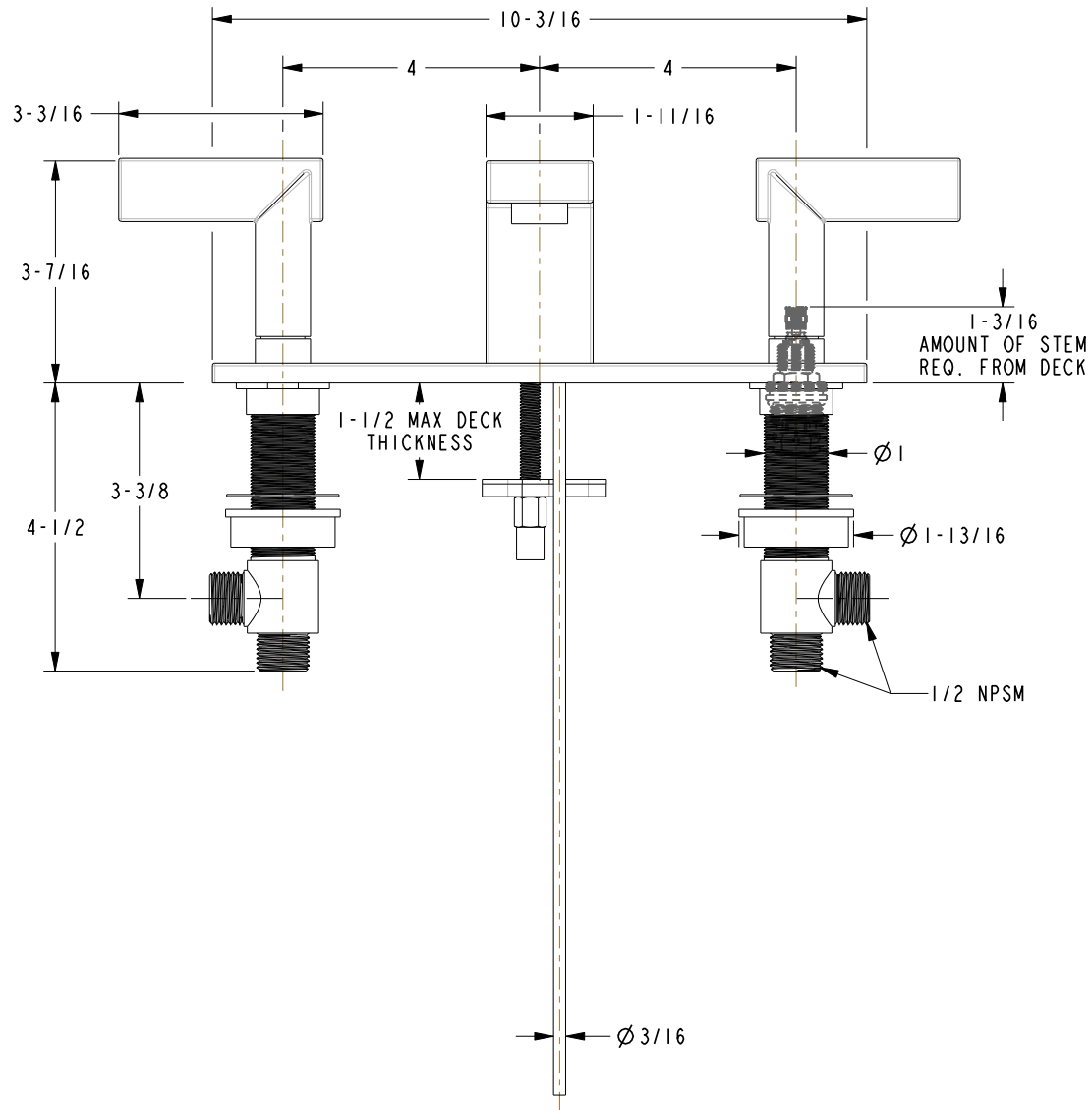
4

3

2

1

SPECIFICATION DWG



DIMENSIONS ARE IN INCHES AND AN APPROXIMATION OF A TYPICAL INSTALLATION

COPYRIGHT 2005 BRASSTECH, INC. THESE DRAWINGS AND THE DESIGNS DEPICTED HEREIN ARE THE PROPRIETARY PROPERTY OF BRASSTECH. ANY USE OR REPRODUCTION IS SUBJECT TO THE EXPRESS APPROVAL OF BRASSTECH. UNAUTHORIZED USE IS STRICTLY PROHIBITED. ALL RIGHTS RESERVED.

BRASSTECH
INCORPORATED

2001 CARNEGIE AVE.
SANTA ANA, CA 92705
(949) 417-5207

DWG NO.

2540A

REV

C

SCALE .340

REF. -

SHEET 2 OF 2