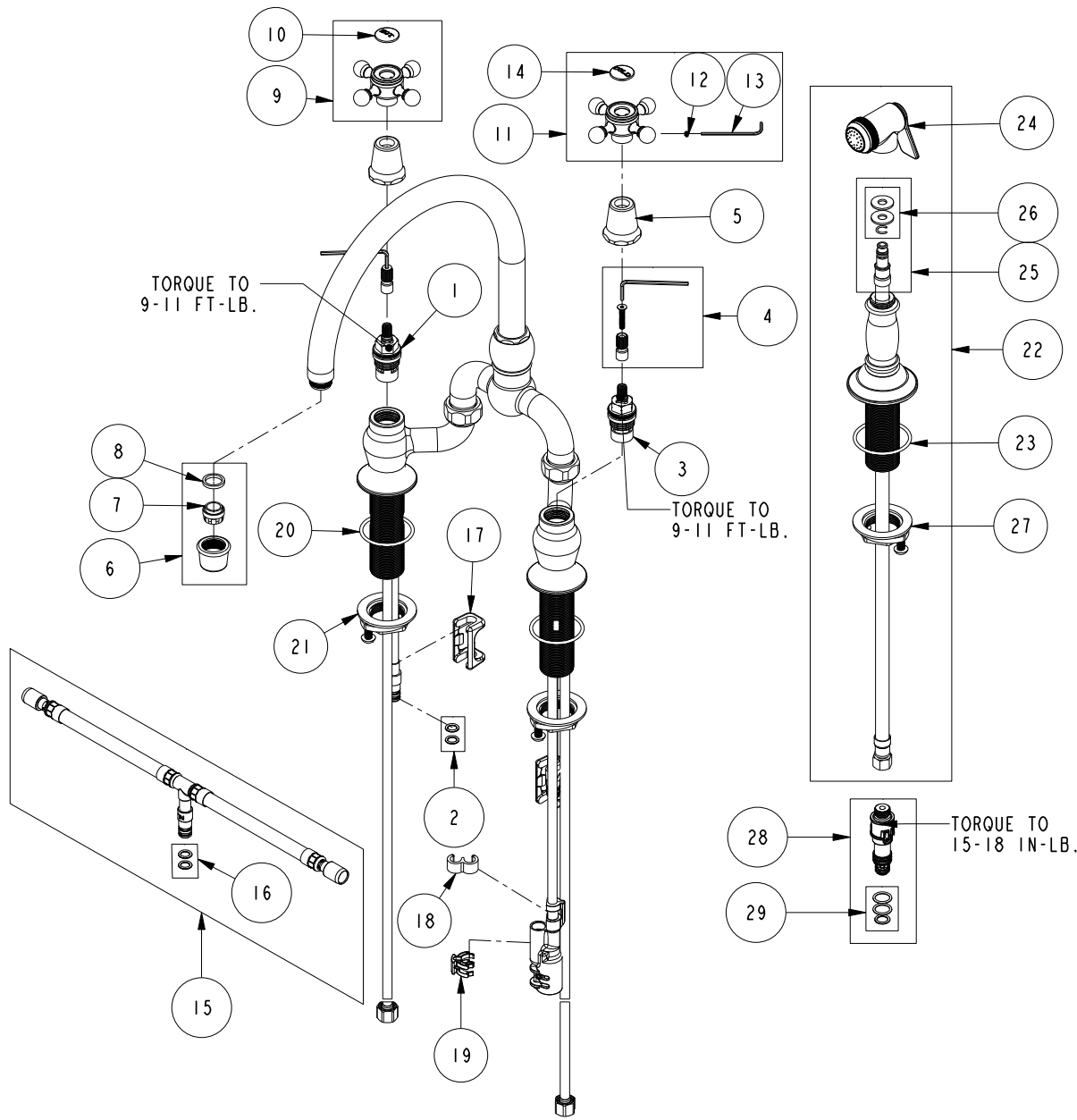


# REPLACEMENT PARTS



ITEM	PT/ASSY	SPECIFY FINISH	DESCRIPTION
1	1-006		C/S VALVE CARTRIDGE - HOT
2	1-399		O-RING KIT FOR SPOUT PEX CONECTION
3	1-005		C/S VALVE CARTRIDGE - COLD
4	10-304		CARTRIDGE STEM ADAPTER KIT
5	13854	YES	HANDLE BONNET - TUB FILLER
6	2-964	YES	AERATOR ASSEMBLY
7	11916		AERATOR JR. INSERT-1.8 GPM
8	91500		GSKT, .578 ID X .728 OD X .102 THK EPDM
9	2-141	YES	HANDLE ONLY, HOT
10	1-108		HOT BUTTON ASSEMBLY W/ ADHESIVE
11	2-142	YES	HANDLE ONLY, COLD
12	92000		SCREW 8 - 32 X 1/8 SS
13	10192		HEX KEY TOOL, #8 5/64
14	1-107		COLD BUTTON ASSEMBLY W/ ADHESIVE
15	1-777		TEE HOSE ASSY
16	1-399		O-RING KIT FOR SPOUT PEX CONECTION
17	91568		RETAINER CLIP
18	91811		TEE HOSE CLIP
19	91812		DIVERTER CLIP
20	91768		O-RING, #2-130, EP, 50 DURO - GREY
21	1-393		1-1/8 18 UNEF MOUNTING KIT
22	129	YES	KITCHEN SPRAY HEAD
23	91762		O-RING, #2-132, EP, 50 DURO - GREY
24	2-119B	YES	SPRAY HEAD ASM
25	1-778		SIDE SPRAY HOSE ASSY
26	1-397		SIDE SPRAY WASHERS
27	1-393		1-1/8 18 UNEF MOUNTING KIT
28	10-303		PEX DIVERTER ASM FOR SIDE SPRAY HOSE
29	1-398		O-RING KIT FOR SIDE SPRAY PEX DIVERTER

**KITCHEN BRIDGE FAUCET W/ SIDE SPRAY**  
**9460**

REV N EN-4698 08/31/23 APPROVED RS

**NEWPORT BRASS.**

t: 949.417.5207 | www.newportbrass.com