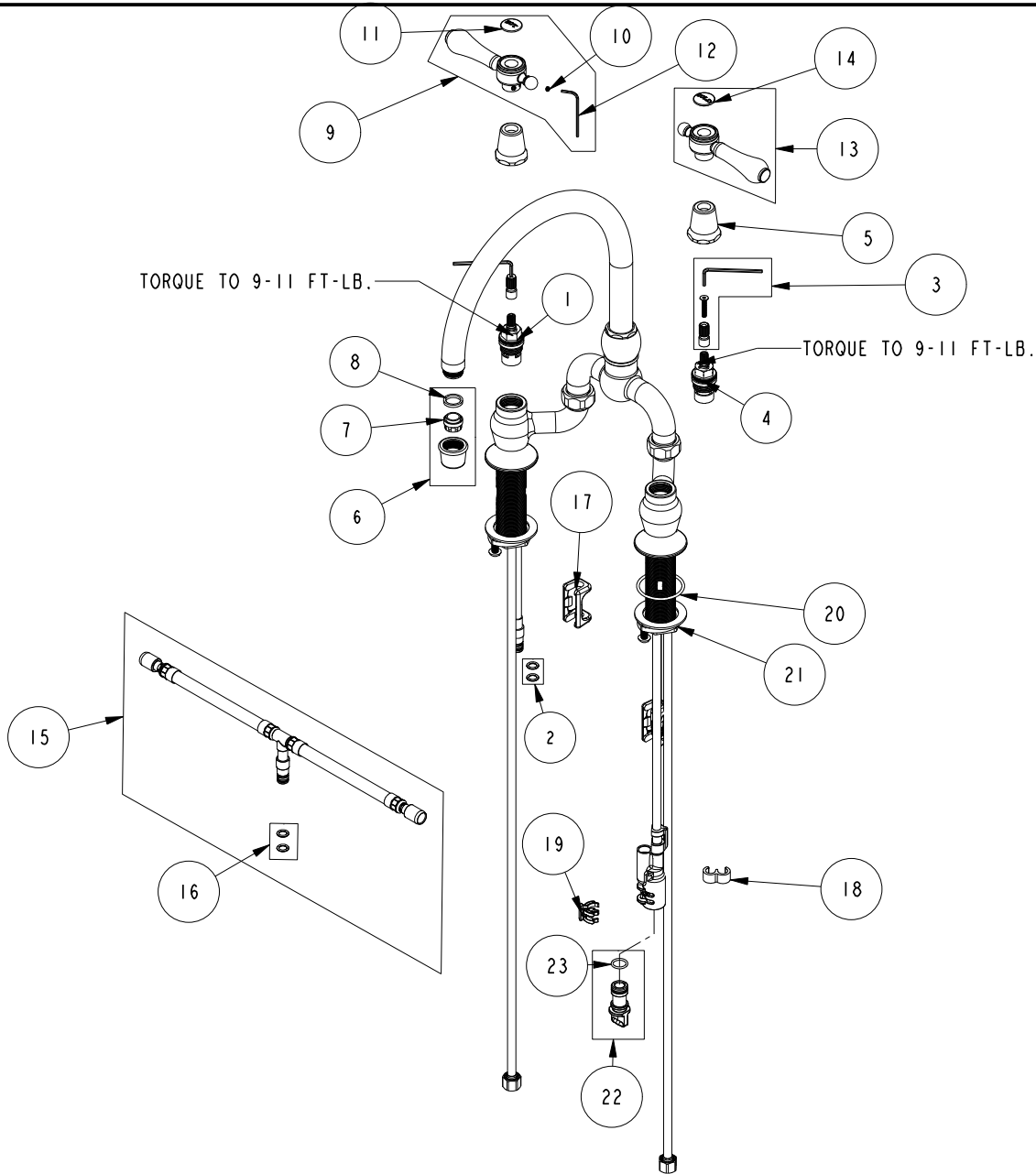


REPLACEMENT PARTS



ITEM	PT/ASSY	SPECIFY FINISH	DESCRIPTION
1	1-006		C/S VALVE CARTRIDGE - HOT
2	1-399		O-RING KIT FOR SPOUT PEX CONECTION
3	10-304		CARTRIDGE STEM ADAPTER KIT
4	1-005		C/S VALVE CARTRIDGE - COLD
5	13854	YES	HANDLE BONNET - TUB FILLER
6	2-964	YES	AERATOR ASSEMBLY
7	11916		AERATOR JR. INSERT-1.8 GPM
8	91500		GSKT, .578 ID X .728 OD X .102 THK EPDM
9	2-134	YES	HANDLE ASSEMBLY - HOT
10	92000		SCREW 8 - 32 X 1/8 SS
11	1-108		HOT BUTTON ASSEMBLY W/ ADHESIVE
12	10192		HEX KEY TOOL, #8 5/64
13	2-133	YES	HANDLE ASSEMBLY - COLD
14	1-107		COLD BUTTON ASSEMBLY W/ ADHESIVE
15	1-777		TEE HOSE ASSY
16	1-399		O-RING KIT FOR SPOUT PEX CONECTION
17	91568		RETAINER CLIP
18	91811		TEE HOSE CLIP
19	91812		DIVERTER CLIP
20	91768		O-RING, #2-130, EP, 50 DURO - GREY
21	1-393		1-1/8 18 UNEF MOUNTING KIT
22	10-325		DIVERTER PLUG KIT
23	91019		O-RING, #2- 014, EPDM, 65-75 DURO, NSF 61

KITCHEN BRIDGE FAUCET
9463

REV K EN-4727 10/20/23 APPROVED RS

NEWPORT BRASS.

t: 949.417.5207 | www.newportbrass.com