

NOTES:

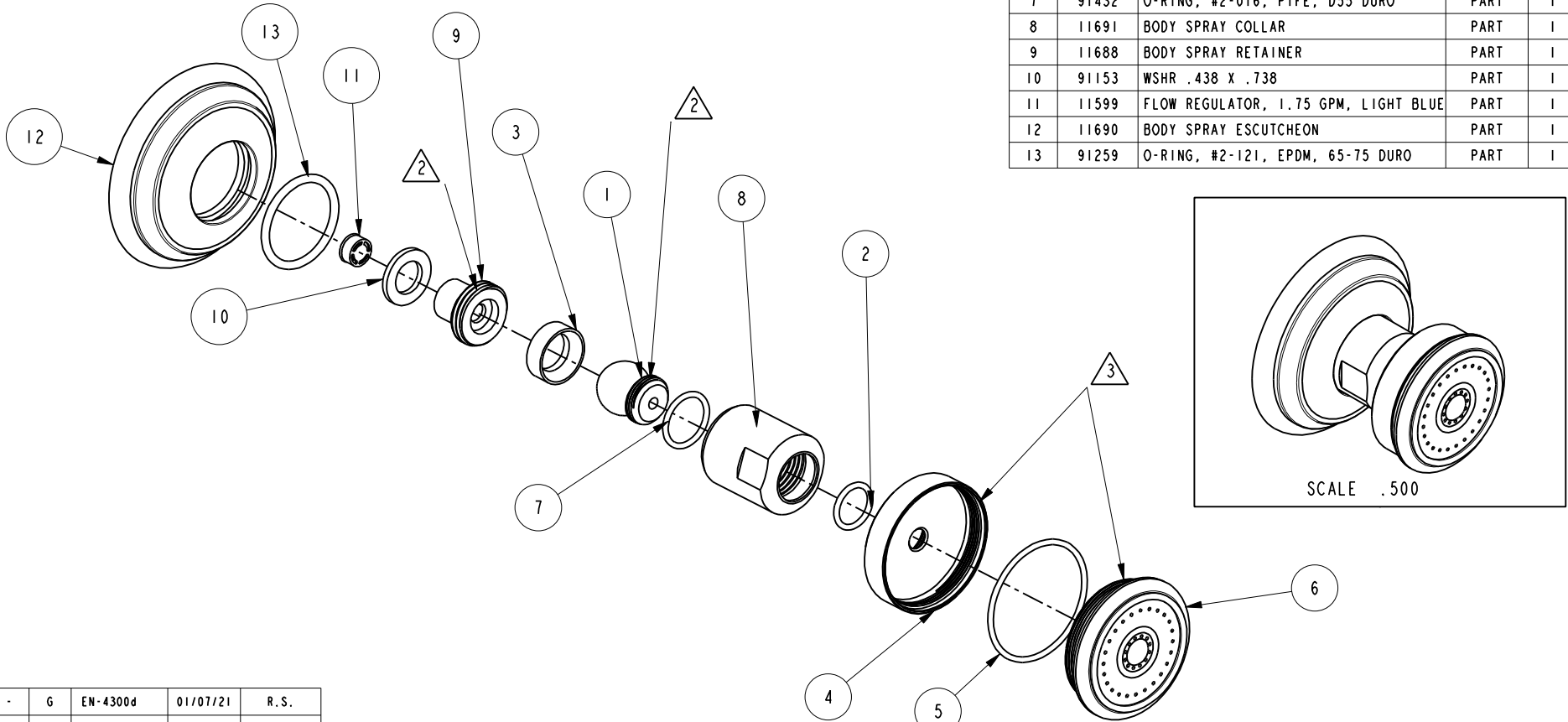
1. TO INSPECT ASSEMBLY, FOLLOW FIRST ARTICLE AND IN PROCESS INSPECTION SHEET.

2. APPLY ADHESIVE LOCTITE 680.

3. APPLY GREASE.

BILL OF MATERIAL (CURRENT LEVEL)

ITEM	PT/ASSY	DESCRIPTION	TYPE	QTY.
1	50199	PIVOT BALL	PART	1
2	91019	O-RING, #2- 014, EPDM, 65-75 DURO, NSF	BART	1
3	91160	WSHR, .5 ID X .74 OD X .25 THK, CONCAVE	BARRUBBER I	1
4	50196	BODY	PART	1
5	91766	O-RING, #2-029, 50 DURO	PART	1
6	50197	BODY SPRAY FACE PLATE	PART	1
7	91432	O-RING, #2-016, PTFE, D55 DURO	PART	1
8	11691	BODY SPRAY COLLAR	PART	1
9	11688	BODY SPRAY RETAINER	PART	1
10	91153	WSHR .438 X .738	PART	1
11	11599	FLOW REGULATOR, 1.75 GPM, LIGHT BLUE	PART	1
12	11690	BODY SPRAY ESCUTCHEON	PART	1
13	91259	O-RING, #2-121, EPDM, 65-75 DURO	PART	1



ZONE	REV	DESCRIPTION	DATE	APPROVED
-	G	EN-4300d	01/07/21	R.S.
-	F	EN-3722	02/08/19	C.G.
-	E	EN-3091	070/8/16	J.A.
-	D	EN-2709	02/26/14	-
-	C	EO-0839	5/25/07	-
-	B	EO-0825	4/17/07	-
-	A	EO-0134	03/10/03	-
-	-	RELEASED	PRE '95	-

COPYRIGHT 2005 BRASSTECH, INC. THESE DRAWINGS AND THE DESIGNS DEPICTED HEREIN ARE THE PROPRIETARY PROPERTY OF BRASSTECH. ANY USE OR REPRODUCTION IS SUBJECT TO THE EXPRESS APPROVAL OF BRASSTECH. UNAUTHORIZED USE IS STRICTLY PROHIBITED. ALL RIGHTS RESERVED.

TESTING	-	-	-
ASSEMBLY	-	-	-
PLATING	-	-	-
POLISHING	-	NEXT ASSY	USED ON
MACHINING	-	APPLICATION	
TOOLING FIXTURE #	REMOVE ALL BURRS AND SHARP EDGES		

UNITS ARE: INCHES [MM]
TOLERANCES ARE:
FRACTIONS DECIMALS ANGLES
±1/16" .X ±.1 [2.5] ±1°
.XX ±.06 [1.5]

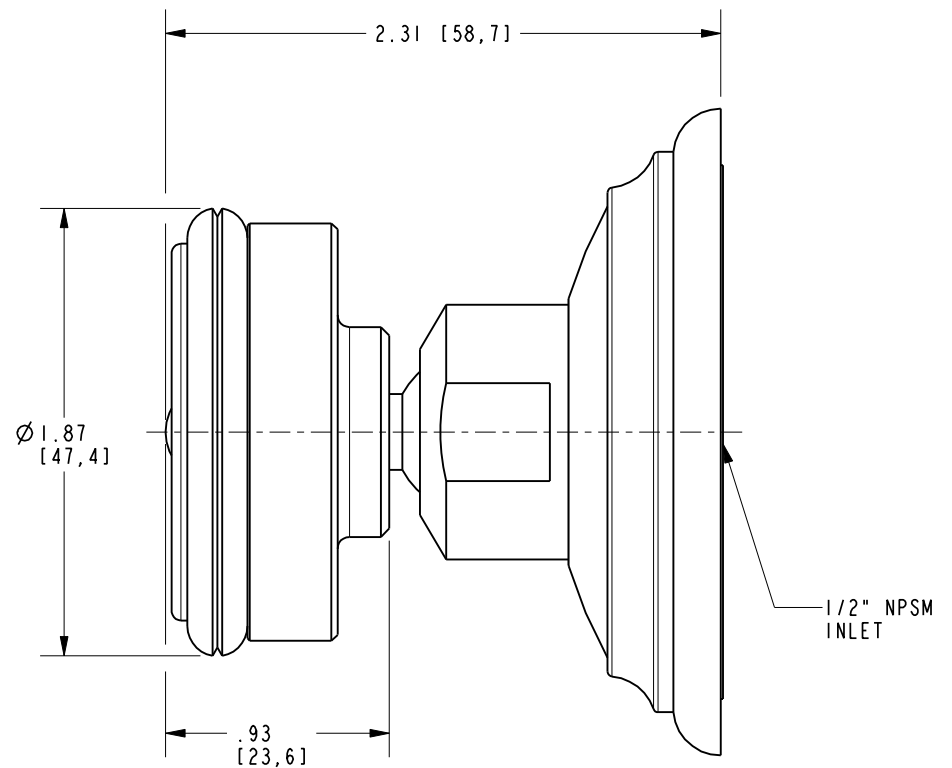
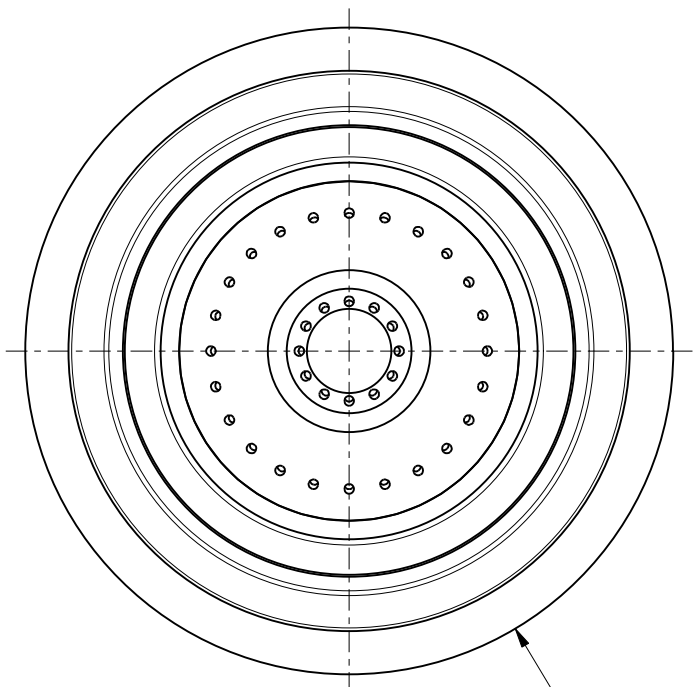
(X.XXX) DENOTES CRITICAL DIMS.
ALL THREADS ARE CRITICAL

DRAWN	JINSON	01/07/21
CHECKED	R.S.	01/07/21
APPROVED	R.S.	01/07/21

BRASSTECH 2001 CARNEGIE AVE.
INCORPORATED SANTA ANA, CA 92705
(949) 417-5207

BODY SPRAY

DWG NO.	217	REV	G
SCALE	.600	REF.	-
SHEET	1	OF	2



BRASSTECH		2001 CARNEGIE AVE. SANTA ANA, CA 92705 (949) 417-5207	
INCORPORATED		DWG NO.	REV
217			G
SCALE 1.250	REF. -	SHEET 2 OF 2	