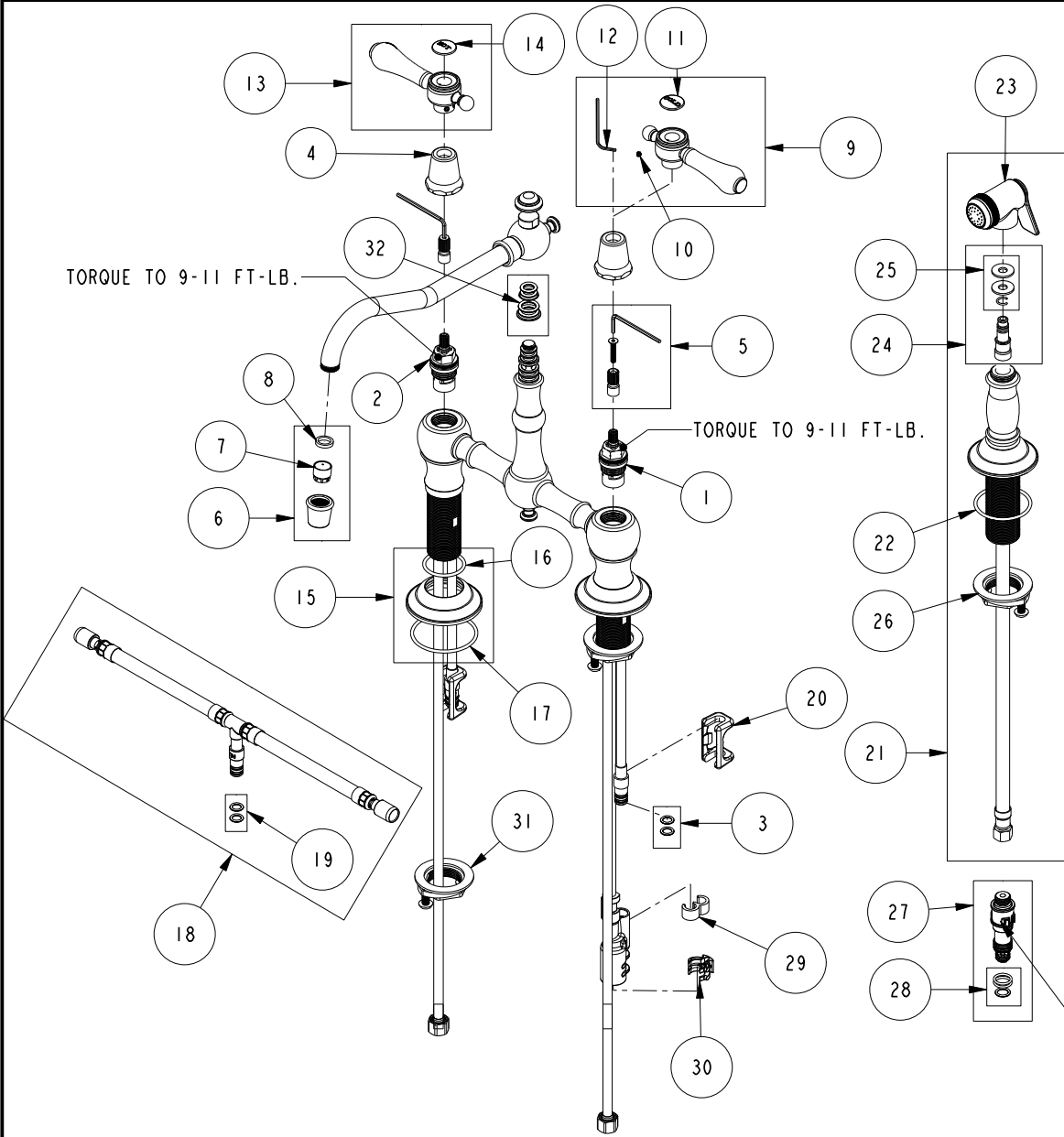


REPLACEMENT PARTS



ITEM	PT/ASSY	SPECIFY FINISH	DESCRIPTION
1	1-005		C/S VALVE CARTRIDGE - COLD
2	1-006		C/S VALVE CARTRIDGE - HOT
3	1-399		O-RING KIT FOR SPOUT PEX CONECTION
4	13854	YES	HANDLE BONNET - TUB FILLER
5	10-304		CARTRIDGE STEM ADAPTER KIT
6	2-259	YES	AERATOR ASM
7	11917		AERATOR INSERT TT, 1.75 GPM
8	91265		WSHR, 11 ID X 15 OD X 2.8 MM THK, FLT, RUBBER NSF 61 APPR
9	2-133	YES	HANDLE ASSEMBLY - COLD
10	92000		SCREW 8 - 32 X 1/8 SS
11	1-107		COLD BUTTON ASSEMBLY W/ ADHESIVE
12	10192		HEX KEY TOOL, #8 5/64
13	2-134	YES	HANDLE ASSEMBLY - HOT
14	1-108		HOT BUTTON ASSEMBLY W/ ADHESIVE
15	20-701	YES	ESCUTCHEON ASM.
16	91305		O-RING, #2- 124, EPDM, 65-75 DURO, NSF 61
17	91752		O-RING, #2- 137, EPDM, 50 DURO
18	1-777		TEE HOSE ASSY
19	1-399		O-RING KIT FOR SPOUT PEX CONECTION
20	91568		RETAINER CLIP
21	129	YES	KITCHEN SPRAY HEAD
22	91762		O-RING, #2-132, EP, 50 DURO - GREY
23	2-119B	YES	SPRAY HEAD ASM
24	1-778		SIDE SPRAY HOSE ASSY
25	1-397		SIDE SPRAY WASHERS
26	1-393		1-1/8 18 UNEF MOUNTING KIT
27	10-303		PEX DIVERTER ASM FOR SIDE SPRAY HOSE
28	1-398		O-RING KIT FOR SIDE SPRAY PEX DIVERTER
29	91811		TEE HOSE CLIP
30	91812		DIVERTER CLIP
31	1-393		1-1/8 18 UNEF MOUNTING KIT
32	10-302		SPOUT O-RING AND WASHER KIT

KITCHEN BRIDGE FAUCET W/ SPRAY
9462

REV K EN-4731 11/15/23 APPROVED RS

NEWPORT BRASS.

t: 949.417.5207 | www.newportbrass.com