

4

3

2

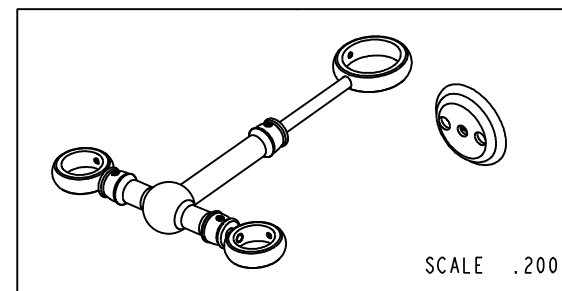
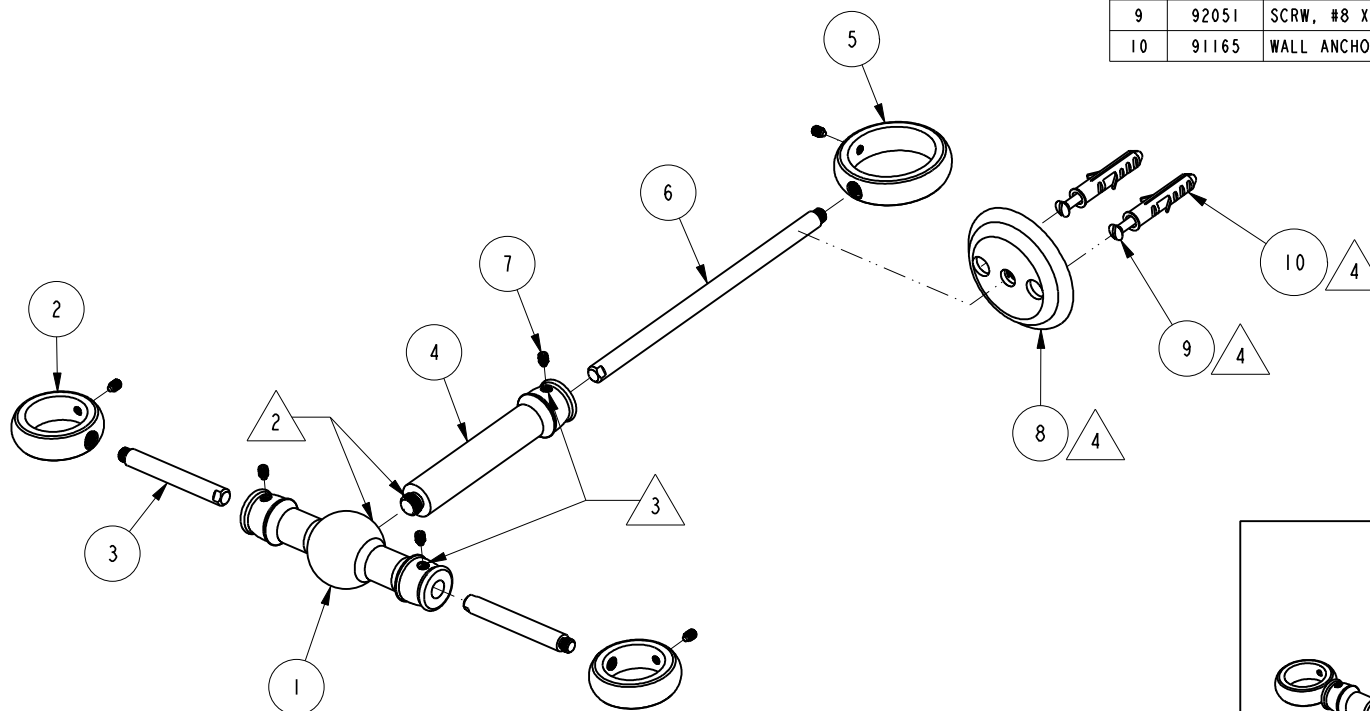
1

NOTES:

- (NI) 1. FIT / FORM / FUNCTION SHALL FOLLOW PS-E.008.
 2 APPLY LOCTITE 680.
 3 SET SCREWS MUST FACE THE SAME DIRECTION.
 4 FOR WALL-MOUNT ONLY.

BILL OF MATERIAL (CURRENT LEVEL)

ITEM	PT/ASSY	DESCRIPTION	TYPE	QTY.
1	11810	STABILIZER BODY	PART	1
2	12453	STABILIZER RING	PART	2
3	11812	STABILIZER ROD, SHORT	PART	2
4	11811	STABILIZER TUBE	PART	1
5	11815	STABILIZER RING, 1 1/2" ID	PART	1
6	11813	STABILIZER ROD, LONG	PART	1
7	92476	SCRW, 8-32 X 3/16 SKT HD W/NYLON FLAT PT	PART	6
8	11838	STABILIZER WALL-MOUNT BRACKET	PART	1
9	92051	SCRW, #8 X 1-3/4 SLT OVL HD BRASS	PART	2
10	91165	WALL ANCHOR PLASTIC	PART	2



ZONE	REV	DESCRIPTION	DATE	APPROVED
-	C	EN-2947d	02/25/16	J.M
-	B	EN-2941	09/02/15	AN
-	A	EN-1708	03/24/11	AN
-	-	EN-1677	01/05/11	AN

COPYRIGHT 2005 BRASSTECH, INC.
 THESE DRAWINGS AND THE DESIGNS
 DEPICTED HEREIN ARE THE PROPRIETARY
 PROPERTY OF BRASSTECH. ANY USE
 OR REPRODUCTION IS SUBJECT TO
 THE EXPRESS APPROVAL OF BRASSTECH.
 UNAUTHORIZED USE IS STRICTLY
 PROHIBITED. ALL RIGHTS RESERVED.

TESTING	-	-	-
ASSEMBLY	-	-	-
PLATING	-	-	-
POLISHING	-	NEXT ASSY	USED ON
MACHINING	-	APPLICATION	
TOOLING FIXTURE #	REMOVE ALL BURRS AND SHARP EDGES		

UNITS ARE: INCHES [MM]
 TOLERANCES ARE:
 FRACTIONS DECIMALS ANGLES
 $\pm 1/16"$.X $\pm .1$ [2.5] $\pm 1^\circ$
 .XX $\pm .06$ [1.5]

(X.XXX) DENOTES CRITICAL DIMS.
 ALL THREADS ARE CRITICAL

DRAWN AN 01/05/11
 CHECKED AN 01/05/11
 APPROVED AN 01/05/11

BRASSTECH
 INCORPORATED

2001 CARNEGIE AVE.
 SANTA ANA, CA 92705
 (949) 417-5207

STABILIZER KIT

DWG NO.

2-734

REV

C

SCALE .300

REF. -

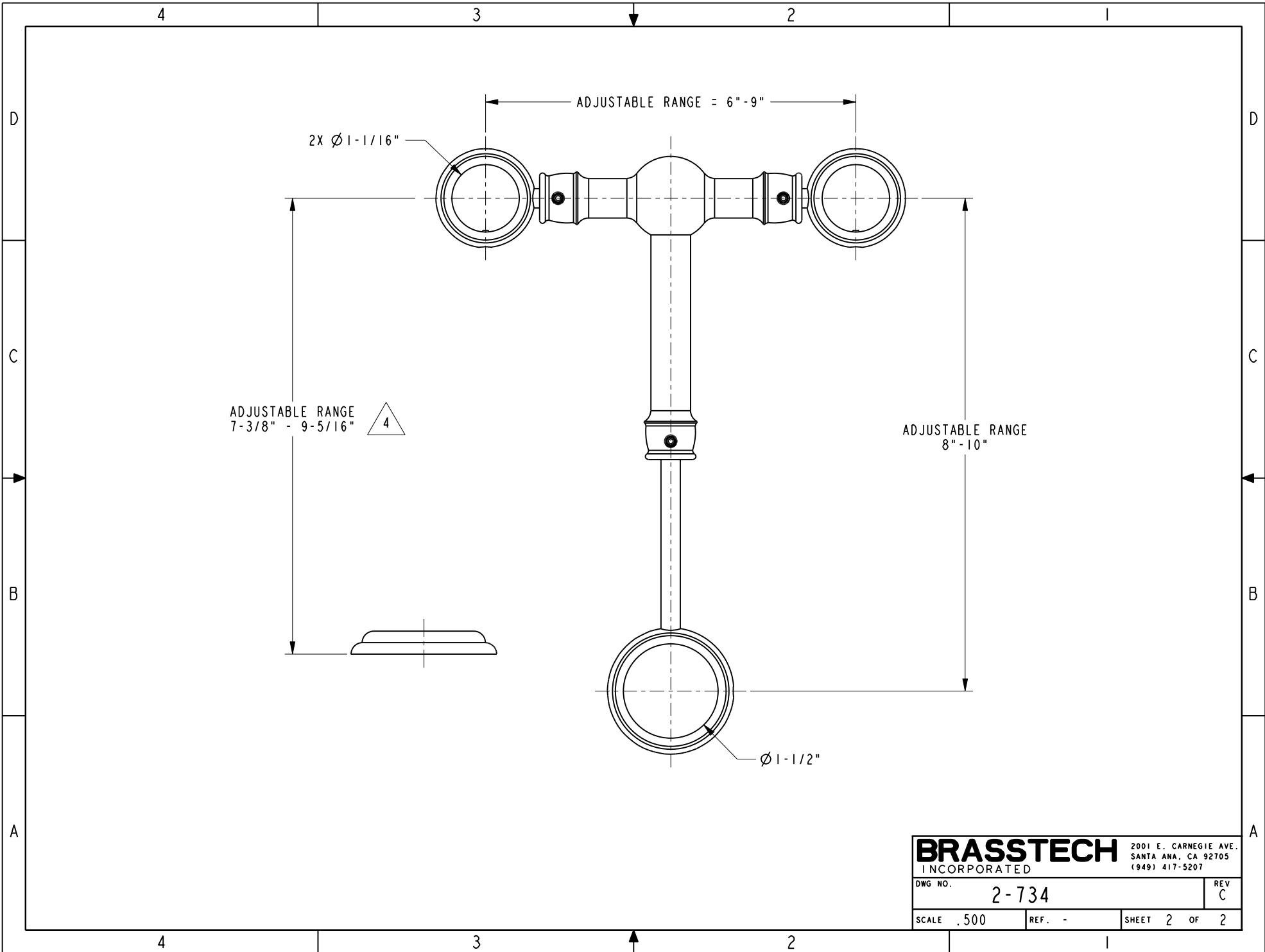
SHEET 1 OF 2

4

3

2

1



BRASSTECH		2001 E. CARNEGIE AVE.	
INCORPORATED		SANTA ANA, CA 92705	
		(949) 417-5207	
DWG NO.	2-734	REV	C
SCALE	.500	REF.	-
		SHEET	2 OF 2