



APRON FRONT/FARMHOUSE SINK INSTALLATION INSTRUCTIONS

General Installation Notes:

- Observe and conform to all local building and plumbing codes.
- All Native Trails sinks, especially undermount and apron front installations, should be installed by professional installers.
- Our sinks are hand crafted and dimensions are approximate; we recommend using the actual basin for the cut-out.
- Different countertop materials will require different methods of cutting and may have other specific needs such as exposed areas of wood that may need waterproofing.
- Make sure a watertight seal exists on all drain connections.
- **Remember to always use non-abrasive cleaners on Native Trails sinks. Mild soap and water is recommended. Refer to Care & Maintenance for further information.**

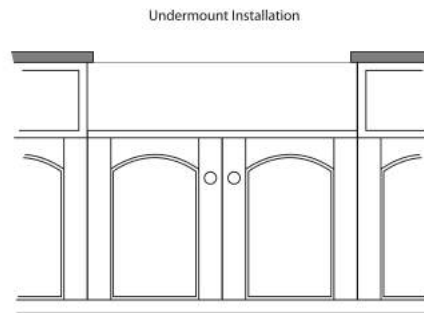


Figure 1

Caution: All installation types need to allow room for faucet installation. Ensure adequate clearance behind the sink for the faucet and backsplash, as well as for full range of motion for faucet handles and spouts.

1. Make a template and cutout. For built-up mount, cut countertop along the outside line of basin profile. After centering the basin and allowing for faucets, handles and backsplashes, use a pencil to outline the basin as your guide for the cut-out, allowing for any reveal (if desired) before the actual cutting. Depending on the installation type, make proper cut-out in the countertop.
2. Create a custom support using 2x4's that will adequately hold the weight of the sink. We highly recommend using a professional installer to install your Native Trails sink.
3. Place the sink on top of cabinet or into the cabinet front cut-out. Apply silicone as a gasket between sink and cabinet.
4. Apply a bead of silicone around top edge of sink. Place countertop on the sink. Make sure that it is centered properly. Remove any excess silicone from the lip or any surfaces.
5. Install the drain according to the drain's installation instructions.

When cleaning up after installation do not use abrasive cleaners, as they may scratch and change the sink surface and finish. Use warm water, a soft cloth and a non-abrasive soap (such as dish soap) to clean the surface. Refer to Care and Maintenance Instructions for further information.