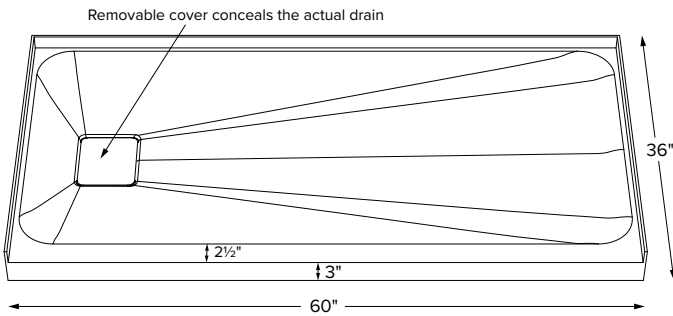


Designer Collection Shower Bases



Shown with color matched SculptureStone® drain cover

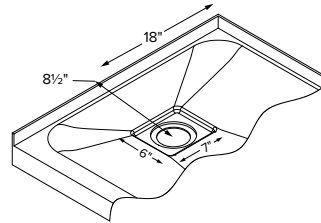


When ordering, please specify left- or right-hand drain.

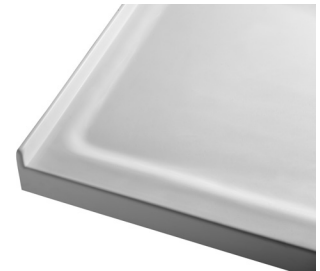


Optional stainless steel hidden drain cover shown above

| | |
|--------------------------------------|--|
| 6036IFM | |
| 60" x 36" x 3" | |
| SINGLE THRESHOLD smooth floor | |
| End Drain | |
| DoloMatte™ 173 lbs / 78 kg | |



Hidden drain cover is removable for access.



Features softened edges and corners

| Model # | Material | Color / Finish | Package Content | MSRP |
|-------------|------------|---------------------|--|----------------|
| SBDM6036IFM | DoloMatte™ | White (CWH) / Matte | Matching SculptureStone Hidden Drain Cover, PVC drain kit in chrome finish | \$2,575 |

Available in white only.

| Options <i>Must be ordered at time of purchase</i> |
|--|
| Quick Ship (QSPRI) \$430 Reduces lead time. Please call for availability. |
| Radiance® (RAD100) \$1,595 Shower floor heating system. Radiance heating grids are fully integrated within the acrylic shell structure of the shower floor. Requires a 110-volt, 15 amp GFCI and remote installation of control box & keypad. |
| Pre-Levelled Foam Base (PLFSB) \$220 |
| Hidden Drain Cover Options Substitute included Hidden Drain Cover with any of the following available options: Natural Stainless Steel Hidden Drain Cover (DCH6S) Powder Coated White Stainless Steel Hidden Drain Cover Must specify part code on order; comes in lieu of standard cover. |
| PVC Drain Kit Finishes Chrome included with shower base (DCH6W) Brushed Nickel upcharge (SBDKBN) \$65 Special Finishes upcharge* (SBDKSF) \$515 *Must send finish sample and allow 3-4 weeks additional lead time. |

| Accessories |
|--|
| Drain Kit Options Solid Brass Drain Kit with Stainless Steel Trim (SBDKSB) \$195 |
| Teak Shower Seat Premium Natural Stainless (TK-SSEAT2416BNS) \$3,035 High-Polished Stainless (TK-SSEAT2416BHP) \$3,465 Standard Natural Stainless (TK-SSEAT2215NS) \$1,125 High-Polished Stainless (TK-SSEAT2215HP) \$1,575 |
| Teak Bath Mat (TKMAT3018) \$815 Measures 30" x 17.5" x 1" Custom sizes also available. Contact MTI for details. |

IMPORTANT ORDERING & INSTALLATION INFORMATION

- 3-sided integral tile flange to facilitate installation. Must specify drain hand on order.
- Single threshold design.
- 3.5" drain opening pre-drilled.
- Drain finish options on this sheet are upcharge prices only. Contact MTI for ordering details for drain kits sold separately.
- Add proper wet-bedding compound to fully support bottom of shower base. Optional factory installed Pre-Levelled Foam Base negates the need to wet bed when installing on a flat, level subfloor. See installation instructions.
- All bases are in accordance with CSA B45.5/IAPMO Z124 standard and compliant with ASTM C 1028-07 coefficient of friction. Dolomatte bases meet ANSI A137.1/A326.3 coefficient of friction and AS HB198:2014 pendulum slip resistance testing.

• Options and accessories may be packaged inside the box. Always check packaging before discarding.
• All product measurements are ±1/2".
• Specifications and configurations are subject to change without notice.
• Measurements herein supersede all others published prior to publication date below.

See the Installation & Operation Manual for more details.
MTI's Customer Service: Monday-Friday 8am-6pm EST
800-783-8827 or service@mtibaths.com

CSA # MTSB-6036IFM
HURL # MTSB-DM6036IFM

©2022 by MTI Baths, Inc. Modification Rights Reserved



Rev. 01 19 2022