



Available as a freestanding model or finished on 1, 2 or 3 sides for various installation applications.

Metro 3

with Sculpted Finish®
MODEL # 175A
66 x 42" x 24"

GENERAL SPECIFICATIONS

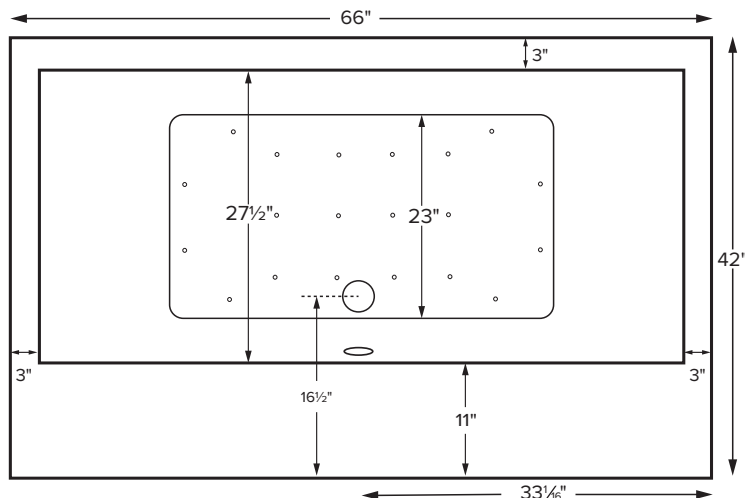
Material - Sculpted Finish Acrylic

Installation - Freestanding or Alcove

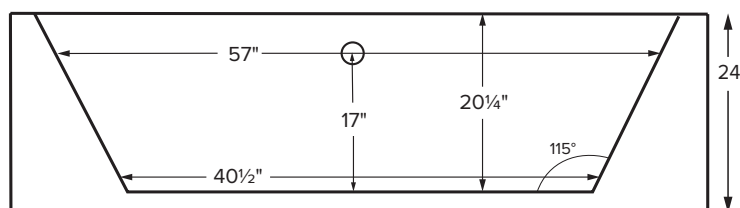
Soaker Weight - 160 lbs / 73 kg

Maximum Fill - 80 gal to overflow

NOTE: Filling this tub to the maximum may require an above average size or dedicated water heater.



Features a flat 11" deck surface on the drain side for mounting faucetry. Drain kit sold separately.
Shown as Air Bath



ELECTRICAL COMPONENTS & SPECIFICATIONS

Hydrotherapy Package	Components Included	GFCI/110V
Microbubbles	Microbubbles pump	1-15 amp
Air Massage	heated blower	1-15 amp
Microbubbles with Air	Microbubbles pump, heated blower	1-20 amp
Air Massage Elite	heated blower, chromatherapy	1-15 amp
Microbubbles with Air Elite	Microbubbles pump, heated blower, chromatherapy	2-15 amp

Electrical requirements may change with the addition of optional therapy components. For more information go to mtibaths.com.

CSA Certified C/US; ANSI Z124.1
CSA Certified C/US; ANSI 112.19.7

See the Installation & Operation Manual for more details.
MTI's Customer Service: Monday-Friday 8am-6pm EST
800-783-8827 or service@mtibaths.com

IMPORTANT ORDERING & INSTALLATION INFORMATION

- Before ordering or installing, please consider future access to equipment.
- Unless ordering Sculpted Finish on 4 sides, please include a diagram specifying which sides will need to be finished, along with location of optional tile flange(s).
- Drain is not included with this tub model.
- When ordering an air bath, the air blower must be remote mounted.
- Microbubbles system components must be installed on a non-Sculpted Finish side. Components will extend beyond the perimeter of the tub. Call MTI for specific details regarding the desired installation before placing the order.
- Radiance placed on floor locations will affect placement of air jets.
- Hydrotherapy equipment may ship loose for remote installation. See package content on the following page for details. Specifications and configurations are subject to change without notice.

- Options and accessories may be packaged inside the tub crate. Always check packaging before discarding.
- All product measurements are $\pm 1/2"$.
- Specifications and configurations are subject to change without notice.
- Measurements herein supersede all others published prior to publication date below.

CSA # MTDS-175A

©2021 by MTI Baths, Inc. Modification Rights Reserved



For more information on hydrotherapy packages please visit: mtibaths.com/wellness/

Metro 3
with Sculpted Finish®
MODEL # 175A
66 x 42" x 24"

Hydrotherapy Packages	Package Contents	Sculpted Finish Sides	Part #	MSRP
Soaker	Soaking bath - no jets, pre-leveled foam base	4-sides sculpted	S175A + SCULPT4	\$8,195
		3-sides sculpted	S175A + SCULPT3	\$7,575
		2-sides sculpted	S175A + SCULPT2	\$6,100
		1-side sculpted	S175A + SCULPT1	\$5,735
Microbubbles	1 infusion port, microbubbles pump, pre-leveled foam base	4-sides sculpted	n/a	n/a
		3-sides sculpted	M175A + SCULPT3	\$10,525
		2-sides sculpted	M175A + SCULPT2	\$9,050
		1-side sculpted	M175A + SCULPT1	\$8,685
Air Massage	20 air jets, heated air blower, pre-leveled foam base	4-sides sculpted	AST175A + SCULPT4	\$11,395
		3-sides sculpted	AST175A + SCULPT3	\$10,775
		2-sides sculpted	AST175A + SCULPT2	\$8,935
		1-side sculpted	AST175A + SCULPT1	\$9,300
Air Massage Elite	30 air jets, heated air blower, Chromatherapy LED lighting, Spa Mode, pre-leveled foam base	4-sides sculpted	AE175A + SCULPT4	\$12,855
		3-sides sculpted	AE175A + SCULPT3	\$12,235
		2-sides sculpted	AE175A + SCULPT2	\$10,760
		1-side sculpted	AE175A + SCULPT1	\$10,395
Microbubbles with Air Massage	1 infusion port, microbubbles pump, 20 air jets, heated air blower, pre-leveled foam base	4-sides sculpted	n/a	n/a
		3-sides sculpted	ASTM175A + SCULPT3	\$12,825
		2-sides sculpted	ASTM175A + SCULPT2	\$11,350
		1-side sculpted	ASTM175A + SCULPT1	\$10,985
Microbubbles with Air Massage Elite	1 infusion port, microbubbles pump, 30 air jets, heated air blower, Chromatherapy LED lighting, Spa Mode, pre-leveled foam base	4-sides sculpted	n/a	n/a
		3-sides sculpted	AEM175A + SCULPT3	\$14,175
		2-sides sculpted	AEM175A + SCULPT2	\$12,700
		1-side sculpted	AEM175A + SCULPT1	\$12,335

Microbubbles system components must be installed on a non-Sculpted Finish® side.

Components will extend beyond the perimeter of the tub. Call MTI for specific details regarding the desired installation before placing order.

For more customized applications, additional hydrotherapies may possibly be integrated in Sculpted Finish® tubs, depending on the types of therapy and the installation application. Visit mtibaths.com or call MTI at 800.783.8827.

RECOMMENDED SENSORY THERAPIES

Chromatherapy

(LE) **\$695** underwater lighting
2 LED lights included

Audiotherapy

(STEREOBT) **\$1,200** 2 transducers
with bluetooth and amplifier
(BTREMOTE) **\$490** bluetooth remote

(STEREOH202) **\$1,450** 4 transducers
amplifier not included

Thermaltherapy

(RAD100) **\$1,400** Radiance®
2 heated zones included
Zones may be specified
on Metro tub deck.

For more information on options and accessories go to Acrylic Tub Options on mtibaths.com

Metro 3 with Sculpted Finish®
MODEL # 175A

Options

Must be ordered at time of purchase.

Standard Color White (CWH)

Textured, Slip-Resistant Bottom (TXTBTM) \$100

Compliant with ASTM C 1028-07 friction coefficient.

Ozonator (OZONE) \$490

Virtual Spout high-flow integrated tub filler (FPMJ) **\$385**

Must be located on same side as tub deck. Specify location when ordering.

Installation Options

Must be ordered at time of purchase.

Tile Flange

Factory Installed rigid ABS

1 Side (TFK1) **\$165**

2 Sides (TFK2) **\$175**

3 Sides (TFK3) **\$190**

Field Install Kit (TFKNI) **\$175**

Includes rigid ABS & adhesive

IMPORTANT: *Must specify flange location(s) on order of Factory-Installed Flange.*

Drains & Overflow Kits

Cable Driven

Drain Finishes – PVC Drain Kit

White/Bone/Biscuit (WOCBW) **\$420**

Chrome (WOC) **\$390**

Brushed Nickel (WOCDBN) **\$395**

Polished Nickel (WOCDPN) **\$515**

Oil-Rubbed Bronze* (WOCBOR) **\$525**

Polished Brass (WOCDBR) **\$495**

Special Finishes* (WOCDSF) **\$1,080**

MTI does not offer a brass body cable drain kit.

Lift & Turn

Drain Finishes – PVC Drain Kit

Chrome (WOC) **\$175**

White (WOW) **\$235**

Brushed Nickel (WOBNI) **\$290**

Slim-Line Overflow with Toe Tap Drain *Must be ordered at time of purchase.*

- Low profile overflow is factory installed
- Overflow measures 4.5" x 1"
- Provides a deeper soak
- Not available for commercial applications

Slim-Line Overflow with Toe Tap Drain

PVC Drain

Chrome (SLOT) **\$475**

Brushed Nickel (SLOTBN) **\$505**

Polished Nickel (SLOTBN) **\$530**

White (SLOTW) **\$400**

Slim-Line Overflow with Toe Tap Drain

Solid Brass Drain

Chrome (SLOTSBC) **\$885**

Brushed Nickel (SLOTSBBN) **\$890**

Polished Nickel (SLOTSBPN) **\$890**

White (SLOTSBW) **\$920**



Optional Slim-Line overflow

Accessories

Pillows from \$145

Teak Bath Mat (TKMAT3018) \$650

Custom sizes also available. Contact MTI for details and pricing.

Teak Tub Tray \$400

Slatted (TK-TRAY1), Solid (TK-TRAY2)

Floor-Mounted High-Flow Tub Filler two designs available

Contemporary

Chrome (FILLC) **\$1,410**

Brushed Nickel (FILLBN) **\$1,630**

Traditional

Chrome (FILLTC) **\$1,435**

Brushed Nickel (FILLTBN) **\$1,660**

Toe Tap Rectangular Overflow must be ordered at time of purchase

Toe Tap

Round Overflow – PVC Drain Kit

Chrome (WOTTC) **\$360**

Brushed Nickel (WOTTBN) **\$365**

Polished Nickel (WOTTPN) **\$365**

Special Finishes* (WOTTSF) **\$1,040**

Round Overflow – Solid Brass Drain

Chrome (WOTTSBC) **\$770**

Brushed Nickel (WOTTSBBN) **\$770**

Polished Nickel (WOTTSBPN) **\$770**

Rectangular Overflow – PVC Drain Kit

Chrome (WOTRC) **\$380**

Brushed Nickel (WOTRBN) **\$390**

White (WOTRW) **\$420**

* MTI has selected an oil-rubbed bronze finish that is compatible with Delta and many other manufacturers. To ensure best match, order as a Special Finish and submit a sample.

* Allow 2-4 weeks lead time for Special Finishes. Send sample for best match.