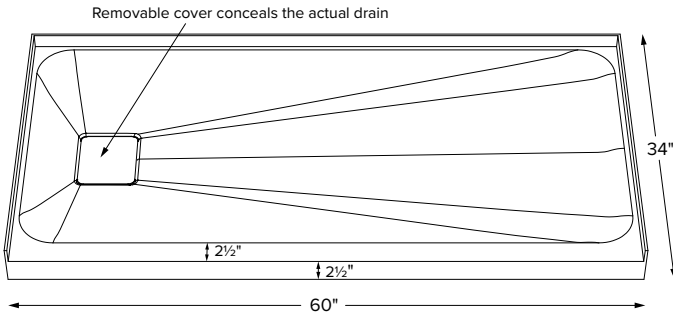


6034IFM



Shown with color matched SculptureStone® drain cover

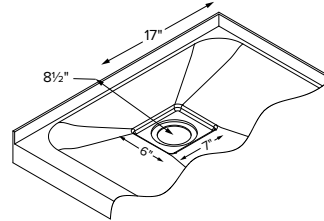


When ordering, please specify left- or right-hand drain.

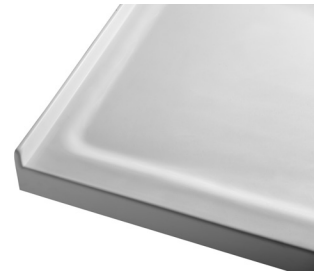


Optional stainless steel hidden drain cover shown above

60" x 34" x 2.5"	
SINGLE THRESHOLD smooth floor	
End Drain	
<b>Acrylic CXL™</b>	<b>DoloMatte™</b>
142 lbs / 64 kg	160 lbs / 73 kg



Hidden drain cover is removable for access.



Features softened edges and corners

Model #	Material	Color / Finish	Package Content	MSRP
SB6034IFM	Acrylic CXL™	White (CWH) / Matte	Matching SculptureStone Hidden Drain Cover, PVC drain kit in chrome finish	<b>\$1,965</b>
SBDM6034IFM	DoloMatte™	White (CWH) / Matte	Matching SculptureStone Hidden Drain Cover, PVC drain kit in chrome finish	<b>\$2,115</b>

Available in white only.

Options <i>Must be ordered at time of purchase</i>
<b>Quick Ship (QSPRI) \$400</b> Reduces lead time. Please call for availability.
<b>Radiance® (RAD100) \$1,470</b> Shower floor heating system. Radiance heating grids are fully integrated within the acrylic shell structure of the shower floor. Requires a 110-volt, 15 amp GFCI and remote installation of control box & keypad.
<b>Pre-Levelled Foam Base (PLFSB) \$170</b>
<b>Hidden Drain Cover Options</b> Substitute included Hidden Drain Cover with any of the following available options: Natural Stainless Steel Hidden Drain Cover (DCH6S) Powder Coated White Stainless Steel Hidden Drain Cover (DCH6W) Must specify part code on order; comes in lieu of standard cover.
<b>PVC Drain Kit Finishes</b> Chrome included with shower base Brushed Nickel upcharge (SBDKBN) <b>\$65</b> Special Finishes upcharge* (SBDKSF) <b>\$380</b> *Must send finish sample and allow 3-4 weeks additional lead time.

Accessories
<b>Drain Kit Options</b> Solid Brass Drain Kit with Stainless Steel Trim (SBDKSB) <b>\$195</b>
<b>Teak Shower Seat</b> Premium Natural Stainless (TK-SSEAT2416BNS) <b>\$2,755</b> High-Polished Stainless (TK-SSEAT2416BHP) <b>\$3,150</b> Standard Natural Stainless (TK-SSEAT2215NS) <b>\$1,020</b> High-Polished Stainless (TK-SSEAT2215HP) <b>\$1,430</b>
<b>Teak Bath Mat (TKMAT3018) \$740</b> Measures 30" x 17.5" x 1" Custom sizes also available. Contact MTI for details.

**IMPORTANT ORDERING & INSTALLATION INFORMATION**

- 3-sided integral tile flange to facilitate installation. Must specify drain hand on order.
- Single threshold design.
- 3.5" drain opening pre-drilled.
- Drain finish options on this sheet are upcharge prices only. Contact MTI for ordering details for drain kits sold separately.
- Add proper wet-bedding compound to fully support bottom of shower base. Optional factory installed Pre-Levelled Foam Base negates the need to wet bed when installing on a flat, level subfloor. See installation instructions.
- All bases are in accordance with CSA B45.5/IAPMO Z124 standard and compliant with ASTM C 1028-07 coefficient of friction. Dolomatte bases meet ANSI A137.1/A326.3 coefficient of friction and AS HB198:2014 pendulum slip resistance testing.

• Options and accessories may be packaged inside the tub crate. Always check packaging before discarding.  
• All product measurements are ±1/2".  
• Specifications and configurations are subject to change without notice.  
• Measurements herein supersede all others published prior to publication date below.

See the Installation & Operation Manual for more details.  
MTI's Customer Service: Monday-Friday 8am-6pm EST  
**800-783-8827** or service@mtibaths.com

CSA # MTSB-6034IFM  
HIRL # MTSB-DM6034IFM

