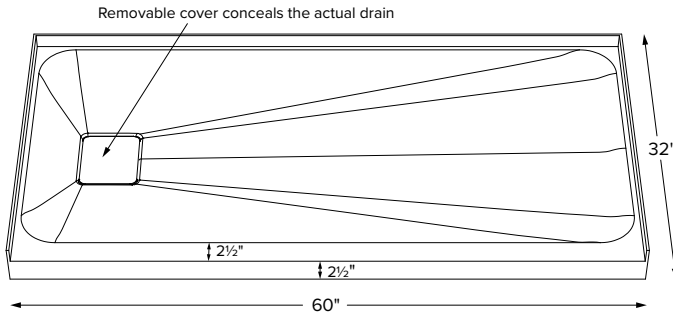


6032IFM



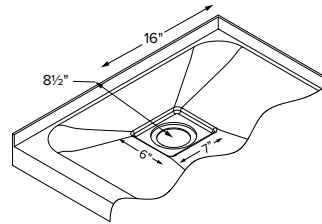
Shown with color matched SculptureStone® drain cover



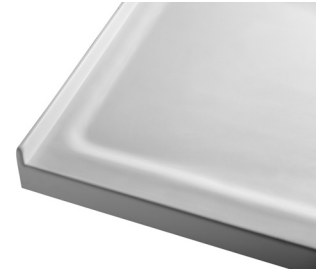
When ordering, please specify left- or right-hand drain.



Optional stainless steel hidden drain cover shown above



Hidden drain cover is removable for access.



Features softened edges and corners

| | |
|----------------------------------|-----------------|
| 60" x 32" x 2.5" | |
| SINGLE THRESHOLD smooth floor | |
| End Drain | |
| Acrylic CXL™ | DoloMatte™ |
| 136 lbs / 61 kg | 153 lbs / 69 kg |

| Model # | Material | Color / Finish | Package Content | MSRP |
|-------------|--------------|---------------------|--|----------------|
| SB6032IFM | Acrylic CXL™ | White (CWH) / Matte | Matching SculptureStone Hidden Drain Cover, PVC drain kit in chrome finish | \$1,925 |
| SBDM6032IFM | DoloMatte™ | White (CWH) / Matte | Matching SculptureStone Hidden Drain Cover, PVC drain kit in chrome finish | \$2,075 |

Available in white only.

Options *Must be ordered at time of purchase*

Quick Ship (QSPRI) \$400

Reduces lead time. Please call for availability.

Radiance® (RAD100) \$1,470 Shower floor heating system. Radiance heating grids are fully integrated within the acrylic shell structure of the shower floor. Requires a 110-volt, 15 amp GFCI and remote installation of control box & keypad.

Pre-Leveled Foam Base (PLFSB) \$170

Hidden Drain Cover Options Substitute included Hidden Drain Cover with any of the following available options:

Natural Stainless Steel Hidden Drain Cover (DCH6S)

Powder Coated White Stainless Steel Hidden Drain Cover (DCH6W)

Must specify part code on order; comes in lieu of standard cover.

PVC Drain Kit Finishes Chrome included with shower base

Brushed Nickel upcharge (SBDKBN) **\$65**

Special Finishes upcharge* (SBDKSF) **\$380**

*Must send finish sample and allow 3-4 weeks additional lead time.

Accessories

Drain Kit Options

Solid Brass Drain Kit with Stainless Steel Trim (SBDKSB) **\$195**

Teak Shower Seat

Premium

Natural Stainless (TK-SSEAT2416BNS) **\$2,755**

High-Polished Stainless (TK-SSEAT2416BHP) **\$3,150**

Standard

Natural Stainless (TK-SSEAT2215NS) **\$1,020**

High-Polished Stainless (TK-SSEAT2215HP) **\$1,430**

Teak Bath Mat (TKMAT3018) \$740 Measures 30" x 17.5" x 1"
Custom sizes also available. Contact MTI for details.

IMPORTANT ORDERING & INSTALLATION INFORMATION

- 3-sided integral tile flange to facilitate installation. Must specify drain hand on order.
- Single threshold design.
- 3.5" drain opening pre-drilled.
- Drain finish options on this sheet are upcharge prices only. Contact MTI for ordering details for drain kits sold separately.
- Add proper wet-bedding compound to fully support bottom of shower base. Optional factory installed Pre-Leveled Foam Base negates the need to wet bed when installing on a flat, level subfloor. See installation instructions.
- All bases are in accordance with CSA B45.5/IAPMO Z124 standard and compliant with ASTM C 1028-07 coefficient of friction. Dolomatte bases meet ANSI A137.1/A326.3 coefficient of friction and AS HB198:2014 pendulum slip resistance testing.

- Options and accessories may be packaged inside the tub crate. Always check packaging before discarding.
- All product measurements are $\pm 1/2"$.
- Specifications and configurations are subject to change without notice.
- Measurements herein supersede all others published prior to publication date below.

See the Installation & Operation Manual for more details.

MTI's Customer Service: Monday-Friday 8am-6pm EST

800-783-8827 or service@mtibaths.com

CSA # MTSB-6032IFM

HURL # MTSB-DM6032IFM

©2021 by MTI Baths, Inc. Modification Rights Reserved



Rev. 10 15 2021