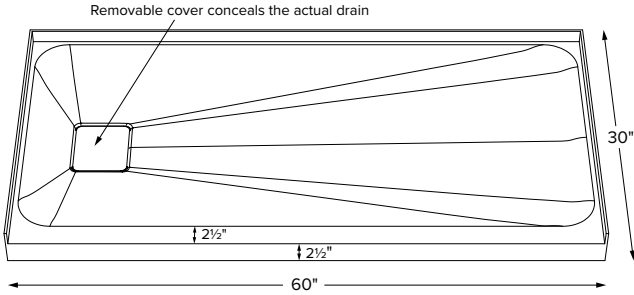


# Designer Collection Shower Bases

6030IFM



Shown with color matched SculptureStone® drain cover

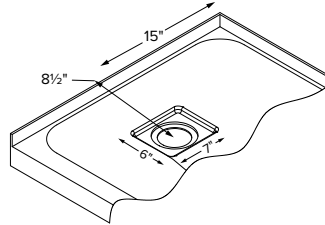


When ordering, please specify left- or right-hand drain.

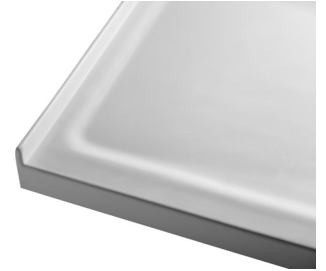


Optional stainless steel hidden drain cover shown above

60" x 30" x 2.5"	
SINGLE THRESHOLD smooth floor	
End Drain	
<b>Acrylic CXL™</b>	<b>DoloMatte™</b>
125 lbs / 57 kg	141 lbs / 64 kg



Hidden drain cover is removable for access.



Features softened edges and corners

Model #	Material	Color / Finish	Package Content	MSRP
SB6030IFM	Acrylic CXL™	White (CWH) / Matte	Matching SculptureStone Hidden Drain Cover, PVC drain kit in chrome finish	<b>\$1,855</b>
SBDM6030IFM	DoloMatte™	White (CWH) / Matte	Matching SculptureStone Hidden Drain Cover, PVC drain kit in chrome finish	<b>\$2,005</b>

Available in white only.

### Options *Must be ordered at time of purchase*

#### Quick Ship (QSPRI) **\$400**

Reduces lead time. Please call for availability.

**Radiance® (RAD100) \$1,470** Shower floor heating system. Radiance heating grids are fully integrated within the acrylic shell structure of the shower floor. Requires a 110-volt, 15 amp GFCI and remote installation of control box & keypad.

#### Pre-Levelled Foam Base (PLFSB) **\$170**

**Hidden Drain Cover Options** Substitute included Hidden Drain Cover with any of the following available options:

- Natural Stainless Steel Hidden Drain Cover (DCH6S)
  - Powder Coated White Stainless Steel Hidden Drain Cover (DCH6W)
- Must specify part code on order; comes in lieu of standard cover.

#### PVC Drain Kit Finishes

- Chrome included with shower base
- Brushed Nickel upcharge (SBDKBN) **\$65**
- Special Finishes upcharge\* (SBDKSF) **\$380**

\*Must send finish sample and allow 3-4 weeks additional lead time.

### Accessories

#### Drain Kit Options

Solid Brass Drain Kit with Stainless Steel Trim (SBDKSB) **\$195**

#### Teak Shower Seat

- Premium
  - Natural Stainless (TK-SSEAT2416BNS) **\$2,755**
  - High-Polished Stainless (TK-SSEAT2416BHP) **\$3,150**
- Standard
  - Natural Stainless (TK-SSEAT2215NS) **\$1,020**
  - High-Polished Stainless (TK-SSEAT2215HP) **\$1,430**

**Teak Bath Mat (TKMAT3018) \$740** Measures 30" x 17.5" x 1"  
Custom sizes also available. Contact MTI for details.

### IMPORTANT ORDERING & INSTALLATION INFORMATION

- 3-sided integral tile flange to facilitate installation. Must specify drain hand on order.
- Single threshold design.
- 3.5" drain opening pre-drilled.
- Drain finish options on this sheet are upcharge prices only. Contact MTI for ordering details for drain kits sold separately.
- Add proper wet-bedding compound to fully support bottom of shower base. Optional factory installed Pre-Levelled Foam Base negates the need to wet bed when installing on a flat, level subfloor. See installation instructions.
- All bases are in accordance with CSA B45.5/IAPMO Z124 standard and compliant with ASTM C 1028-07 coefficient of friction. Dolomatte bases meet ANSI A137.1/A326.3 coefficient of friction and AS HB198:2014 pendulum slip resistance testing.

• Options and accessories may be packaged inside the tub crate. Always check packaging before discarding.  
• All product measurements are ±1/2".  
• Specifications and configurations are subject to change without notice.  
• Measurements herein supersede all others published prior to publication date below.

See the Installation & Operation Manual for more details.  
MTI's Customer Service: Monday-Friday 8am-6pm EST  
**800-783-8827** or [service@mtibaths.com](mailto:service@mtibaths.com)

CSA # MTSB-6030IFM  
HIRL # MTSB-DM6030IFM

©2021 by MTI Baths, Inc. Modification Rights Reserved



Rev. 10 15 2021