

Boutique Collection - SculptureStone™ Lavatory Sinks

MTI's SculptureStone™ sink bowls are designed to accommodate nearly any properly sized lavatory drain kit. Because of variations in lavatory drain design styles, the following drain installation information is provided:

- Contact area from drain to sink requires careful installation to seal properly.
- MTI recommends the use of a proper water sealant product, such as silicone, in lieu of plumber's putty under the waste flange at the contact area.
- Insufficient sealant on installation may result in over tightening in an attempt to achieve a better seal at the contact area.
- Over tightening will create excessive stress at the contact point which can result in compression cracks over time.
Compression cracks are not considered a defect of material and will void the product's warranty.

Recommendations:

1. Use sealant (Silicone) generously near and at the contact area and tighten. Typical tightness – snug plus an eighth to a quarter turn.
2. Allow time for sealant to cure before water testing.

Installation instructions for semi-recessed countertop sinks

1. Place sink in desired location and mark drain opening on countertop.
2. Mark a 4-6" cutout for drain assembly. The cutout has to be just large enough so that the drain assembly can be tightened directly onto the sink. If faucet is to be mounted to sink, allow additional clearance for supply lines.
3. Check for correct drain location by temporarily placing sink on counter.
4. If faucetry will be installed on the sink, drill appropriate sized hole(s) for valve(s) using a standard hole saw.
5. Remove sink from counter and install the drain and faucet assemblies.
6. Apply a thin bead of clear silicone or matching tub and tile caulk to the bottom edge of the sink and secure to countertop. We recommend the use of silicone in lieu of plumber's putty under the flange of the lavatory drain.
7. Place the sink onto the desired location and allow silicone to cure.
8. Connect the supply lines and drain pipes; then test for leaks.

Installation instructions for semi-recessed lavatory sinks.

1. Place template(s) in desired location and mark line for cutout.
2. Cut countertop using appropriate tools for countertop material.
3. Set sink in place. Note: if sink does not fit properly, lift sink and rotate 180 degrees.
4. Install drain and faucet. We recommend the use of silicone in lieu of plumber's putty under the flange of the lavatory drain.
5. Test for plumbing leaks.
6. Apply a thin bead of clear silicone or matching tub and tile caulk to the edge of the sink where it meets the countertop. You may also apply around the underside of the vanity to ensure a water-tight seal.
7. Let silicone or caulk cure for 24 hours before use.

Installation instructions for undermount sinks.

MTI does not provide templates for undermounting. Please have the product on site for the solid surface fabricator.

1. The sink can be fixed to the top using the color matched glue appropriate for the solid surface material being used for the top.
2. Lay the top face down, and use the counter top glue to attach sink. Allow to set.
3. Complete routing and sanding where countertop meets the sink.
4. Alternatively, the sink can sit on a ledge underneath the vanity counter top. Seal the top seam with color matched caulk or clear silicone. The fabricator may use the glue appropriate to the counter top material.
5. Install drain and faucet. We recommend the use of silicone in lieu of plumber's putty under the flange of the lavatory drain.
6. Test for plumbing leaks.
7. Let silicone or caulk cure for 24 hours before use.



Boutique Collection - SculptureStone™

Installation - Lavatory Sinks & Counter-Sinks

IMPORTANT! Read all instructions carefully before beginning installation or drilling of sink.

Installation instructions for wall-mounted Counter-Sinks.

1. Attach carrier arms to wall studs using the hardware supplied. MTI recommends using all the supplied bolts for maximum strength.
2. MTI Baths recommends using an industrial strength tape (3M VHB works well) or a liquid nails type adhesive to attach the countertop to carrier arms. Please check local codes for any mounting requirements.
3. Clean all surfaces with denatured alcohol.
4. If using the tape method, apply tape to carrier arm, peel back a 1" section of the tape, and pull it off toward the side before placing the sink on the carrier arms. It is extremely important that the sink is properly aligned at this point because the tape forms an immediate and permanent bond. Pull the 1" piece of tape back off to expose the rest of the tape's sticky surface. Press down on the countertop to ensure the countertop and tape have good contact.
5. If using adhesive, apply a bead of adhesive to each carrier arm. Align the counter-sink in the correct position, and press firmly to ensure good contact.
6. Install drain and faucet. We recommend the use of silicone in lieu of plumber's putty under the flange of the lavatory drain.
7. Test for plumbing leaks.

Installation instructions for semi-recessed Continuum sink

1. Locate the two templates provided. Template #1 is the inner cutout. Template #2 is the outer cutout for the sink. Mark both cutouts on the slab prior to cutting.
2. Using an angle grinder with granite cutting contour blade, cutout the inner most elliptical piece of countertop. This piece will be re-used as the insert in the finished sink. Make the cutout slightly larger to compensate for grinding and polishing.
3. Carefully remove the innermost remnant and store in a safe location. Further instructions regarding this piece are continued on line #8.
4. Widen the cutout in the slab to fit the outermost #2 template dimensions.
5. Insert the sink through cutout and check for proper fit. If sink does not fit properly, lift sink and rotate 180 degrees. Complete installation using a bead of clear silicone.
6. Take innermost remnant and drill (2) 1-1/4" diameter, half moon finger pulls, centered on the left and right edges. Please see template.
7. Mark the center point of the insert. From the center, grind a gradual slope towards the edge of the insert, which will facilitate the drainage of the water on the insert. Make sure to keep the center point the highest point.
8. Finish top face and all edges of inner remnant to the template markings. It is ideal to have a 1/8" gap between the sink and the insert to allow for drainage. Each Sink is hand crafted and some adjustments to outer edge of inner remnant may be necessary to achieve uniform 1/8" gap.
9. Locate and mark adjustable leg base plate locations on underside of inner remnant. Avoid placing any legs over the drain location. Legs adjust from 2-1/8 to 3-1/8" in height.
10. Install adjustable legs in a triangular pattern to bottom of inner remnant using two part epoxy. Legs adjust to accept material 1/2" to 1-1/2" thick.
11. Measure distance from bottom inside of sink to top of outer countertop.
12. Adjust legs to replicate the height measured on line #10.
13. Insert finished remnant to align with outer countertop height. If insert does not hit properly, lift insert and rotate 180 degrees.



Installation Instructions for Incline Sink

The Incline sink uses a unique slot drain that does not have any exposed drain components on top. The incline sink is available as an undermount sink or as an MTI counter-sink. The incline sink is not for top mount, or self rimming applications. This feature requires a special drain trough assembly ** below to catch water and needs to be installed per the following instructions.

Undermount installation:

- 1) Turn sink over to clean flat area of sink where trough will attach. Concentrate on outer edges as this is where the silicone will be adhering. Use Ethyl Propyl alcohol to clean surfaces of both the sink, and the drain trough.



- 2) Install drain assembly onto trough so it looks like this:



**This drain assembly does not have grates by design so objects can move easily to P-trap and no clogging at drain will occur.

- 3) Once the drain and trough are assembled and the surfaces cleaned, put a thick bead of clear silicone adhesive on the trough lip (shown above in picture) all the way around the entire perimeter.
- 4) Place trough onto sink bottom (flat area) making sure that the trough completely covers the slot opening in the sink. Allow time for Silicone adhesive to cure completely. Please refer to silicone cure instructions. Please note: You **MUST** use silicone **adhesive**, **NOT** clear kitchen & bath silicone.
- 5) Water test for leaks, and if found, repeat the mounting procedure. Once sink is leak free, it is now ready for under mount installation.

Countersink Installation:

- 1) Install countersink onto vanity. Follow instructions above for attaching the drain trough assembly to the sink.
- 2) Sink is now ready for P-trap attachment

Care & Cleaning: Once installed, the area of the Drain Pan should be periodically flushed with hot water and bleach, usually 10:1 is sufficient (10 parts water, 1 part bleach). Let the bleach 'flush' sit for about 10 minutes, and then flush again with clean hot water. This will keep the Drain Pan area clean and free of mildew.

An alternative to bleach is to use straight hydrogen peroxide (3% solution). Pour hydrogen peroxide into the Drain Pan, trying to get the solution into all areas of the Drain Pan. Allow to sit 10 minutes, and then flush with hot water.

Also, the slot area of the sink could get dirty. A small brush like a toothbrush works great to scrub this area to remove mildew. If a stain persists, folded up sandpaper can be used to remove the stain. This is not recommended for our gloss finish. 80 grit can be used for our matte finish.

Access: If access is needed within the trough area, disconnect the P-trap and cut the silicone with a knife and remove trough/drain assembly.



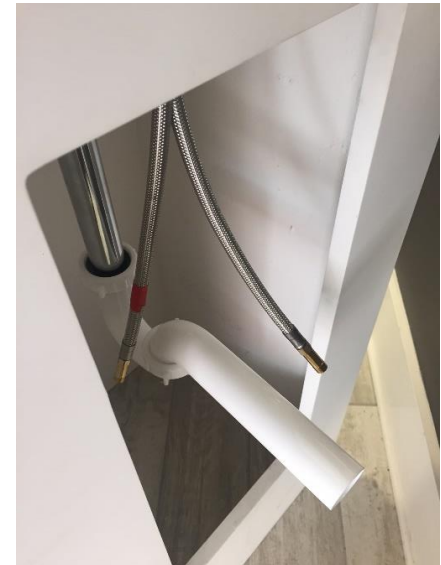
Prior to reassembling, scrape off the silicone remnants from the sink bottom and trough, clean with Ethyl Propyl Alcohol and reapply silicone adhesive. Place trough back onto bottom of sink and let cure. Once silicone cures, re-attach P-trap.

Installation Instructions for Petra/Halo Pedestal Sink

1) Install faucet and drain using access area in back of pedestal



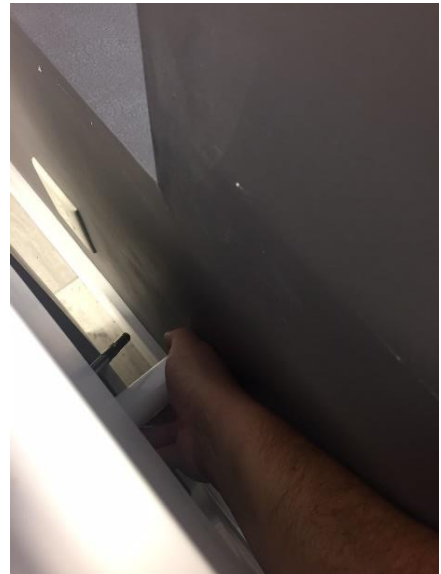
2) Attach steel braided hose and P-trap on drain so they are ready for connections to wall. Cut p-trap tubing to correct size.



3) Set pedestal using included adjustable feet to make sure the pedestal sits on the floor level with as little a gap as possible to the floor. 2" min between the back of the pedestal and wall is required to access back area for trap and water supply connections.



4) Reach behind pedestal and connect water supplies to angle stops and P-trap compression nut. Turn angle stops fully open. Now turn faucet on and check for leaks at stops and drain/p-trap.



5) Make slight adjustments to the pedestal to get position correct. The pedestal can be pushed slightly toward the wall if a tighter look is desired. Make sure drain and faucet connections remain intact after adjustments.

6) Optionally, the bottom edge can be sealed to the floor with a sealant.



Boutique Collection - SculptureStone™

Care and Cleaning - Lavatory Sinks and Counter-Sinks

CARE AND CLEANING INSTRUCTIONS

For Matte Finish

The SculptureStone™ (ESS) surface of all MTI Boutique Collection lavatory sinks is among the highest quality surfaces available. Its hard, non-porous surface prevents dirt from accumulating and resists stains better than other materials. With normal use, the ESS will retain its beauty with only a minimal amount of care. To maintain the elegant look of the ESS surface, follow these simple steps:

1. MTI recommends cleaning with any mild dish soap and water.
2. Remove dust or dry dirt with a soft, damp cloth.
3. Clean grease, oil, paint or ink stains with isopropyl (rubbing) alcohol. Dry with a soft, dry cloth.
4. For more stubborn stains, use a mild abrasive cleaner such as Soft Scrub or Bon Ami. It may take a little more scrubbing to actually remove marks and polish surface. You can also use a gray Scotch Brite pad. **DO NOT USE** the green Scotch Brite pads on the solid-surface tubs as it will destroy the finish.
5. Avoid using razor blades or other sharp objects that might scratch the surface.
6. Do not use harsh chemicals, such as hydrochloric acid, sodium hydroxide, paint thinner, chloride solvents, strong acid or base, as these will permanently damage the finish. Also avoid any cleaners that include lime removal agents such as CLR or Lime-A-Way, as these can also damage the finish.
7. Small scratches may be removed by sanding with 180 grit wet/dry paper and then cleaning with Soft Scrub.

MTI's ESS sinks have been designed and engineered to resist scratches and stains when used properly. The durable finish will resist food acids and should not stain under normal bathroom conditions. Improper use may damage the tub or its finish and void the warranty.

REMEMBER — If you do damage the sink, minor cuts or scratches can usually be buffed or polished out of the finish by a qualified professional.

For Gloss Finishes

The SculptureStone™ (ESS) surface of all MTI Boutique Collection lavatory sinks is among the highest quality surfaces available. Its hard, non-porous surface prevents dirt from accumulating and resists stains better than other materials. With normal use, the ESS will retain its beauty with only a minimal amount of care. To maintain the elegant look of the ESS surface, follow these simple steps:

1. MTI recommends cleaning with any mild dish soap and water or products specifically made for cleaning granite or other high-gloss counter surfaces (e.g. Countertop Magic).
2. Remove dust or dry dirt with a soft, damp cloth.
3. Clean grease, oil, paint or ink stains with isopropyl (rubbing) alcohol. Dry with a soft, dry cloth.
4. Never use any abrasive cleaners. If any product feels gritty when rubbed between your fingers, it is **NOT** safe to use on your gloss or high-gloss ESS product.
5. Avoid using razor blades or other sharp objects that might scratch the surface.
6. Do not use harsh chemicals, such as hydrochloric acid, sodium hydroxide, paint thinner, chloride solvents or any strong acid or base, as this will permanently damage the finish. Also avoid any cleaners that include lime removal agents such as CLR or Lime-A-Way, as these can also damage the finish.

MTI's ESS sinks have been designed and engineered to resist scratches and stains when used properly. The durable finish will resist food acids and should not stain under normal bathroom conditions. Improper use may damage the tub or its finish and void the warranty.

REMEMBER — If you do damage the sink, minor cuts or scratches can usually be buffed or polished out of the finish by a qualified professional.



Boutique Collection - SculptureStone™

Warranty - Lavatory Sinks and Counter-Sinks

Residential Warranty

This warranty is effective for all MTI SculptureStone™ (ESS) sinks manufactured after January 1, 2007, and is in lieu of all other warranties. MTI Baths provides a limited five year warranty on sinks for use in the continental United States to the original purchaser for personal or single family use. Warranty begins on date of purchase (regardless of installation date). Blemishes, air holes or casting marks on the underside of the sink are not considered defects and do not affect the performance or quality of the sink. Slight variations in the surface are indigenous to the natural stone appearance of the product and are not considered defects or flaws. Variations in the surface do not compromise the structural integrity of the product.

This warranty excludes:

1. Any obligation other than replacement of defective parts, when presented to the selling distributor, together with proof of purchase, during the warranty period.
2. Any labor charges, removal or reinstallation expense, freight or any incidental or consequential damages resulting from any defective product.
3. Products classified as "accessories."
4. Normal wear and tear, including chips and/or scratches.

This warranty shall be voided by any of the following:

1. Modification.
2. Improper installation, care or maintenance of the product.
3. Use of the product for any purpose or in any manner other than for which it is specifically intended.
4. Improper use and maintenance contrary to the use and care instructions.

This warranty supersedes any and all other warranties, expressed or implied. The foregoing warranties are exclusive and made only to the buyer. No other warranty, whether expressed, implied or statutory, including any warranty of merchantability or fitness for particular purpose shall exist in connection with any of the warranties on behalf of MTI in addition to or different from those herein given, or to assume for MTI any other liability in connection with any of its product except in a written statement which is signed by an officer of MTI expressly and intentionally giving such warranties or expressing such liabilities.

MTI Baths is NOT liable for incidental or consequential damage, loss of time, inconvenience, incidental expenses, labor or material charges or any other costs related to the application of this warranty.

Commercial Warranty

This warranty is effective for all MTI Engineered Solid Stone (ESS) sinks manufactured after January 1, 2007, and is in lieu of all other warranties. MTI Baths provides a limited two year warranty on sinks for use in the continental United States to the original purchaser for commercial use. Warranty begins on date of purchase (regardless of installation date). Blemishes, air holes or casting marks on the underside of the sink are not considered defects and do not affect the performance or quality of the sink. Slight variations in the surface are indigenous to the natural stone appearance of the product and are not considered defects or flaws. Variations in the surface do not compromise the structural integrity of the product.

This warranty excludes:

1. Any obligation other than replacement of defective parts, when presented to the selling distributor, together with proof of purchase, during the warranty period.
2. Any labor charges, removal or reinstallation expense, freight or any incidental or consequential damages resulting from any defective product.
3. Products classified as "accessories."
4. Normal wear and tear, including chips and/or scratches.

This warranty shall be voided by any of the following:

1. Modification.
2. Improper installation, care or maintenance of the product.
3. Use of the product for any purpose or in any manner other than for which it is specifically intended.
4. Improper use and maintenance contrary to the use and care instructions.

This warranty supersedes any and all other warranties, expressed or implied. The foregoing warranties are exclusive and made only to the buyer. No other warranty, whether expressed, implied or statutory, including any warranty of merchantability or fitness for particular purpose shall exist in connection with any of the warranties on behalf of MTI in addition to or different from those herein given, or to assume for MTI any other liability in connection with any of its product except in a written statement which is signed by an officer of MTI expressly and intentionally giving such warranties or expressing such liabilities.

MTI Baths is NOT liable for incidental or consequential damage, loss of time, inconvenience, incidental expenses, labor or material charges or any other costs related to the application of this warranty.

